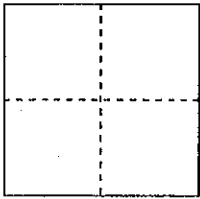


CORNER RECORD

COUNTY OF PLACER, CALIFORNIA

City of \_\_\_\_\_ Document Number 20080092  
Brief Legal Description LOT 10, WALDEN WOODS UNIT NO. 5 BOOK P MAPS PAGE 32



S. 25  
T. 11 N.  
R. 7 E.  
M.D.M.

CORNER TYPE

Government Corner  Control   
Meander  Property   
Rancho  Other   
Date of Survey \_\_\_\_\_

COORDINATES

(Optional)  
N. \_\_\_\_\_  
E. \_\_\_\_\_  
Zone \_\_\_\_\_ Datum \_\_\_\_\_  
Elev. \_\_\_\_\_

Corner---- Left as found  Found and tagged  Established  Reestablished  Rebuilt

Identification and type of corner found: Evidence used to identify or procedure used to establish or reestablish corner:

- 1) FOUND 3/4" REBAR, NO TAG @ N.W. COR LOT 10; AFFIXED TAG "LS6376".
- 2) FOUND LOOSE & DISTURBED REBAR (3/4") LYING ON ROCKS APPROXIMATELY 1 FOOT NE OF CORNER POSITION. FOUND 3 REBAR ON S'LY PL PER R-2. ACCEPTED MONUMENTS TO BE ON S'LY PL. PRORATED DISTANCE BETWEEN 2

A description of the physical condition of the monument as found and as set or reset:

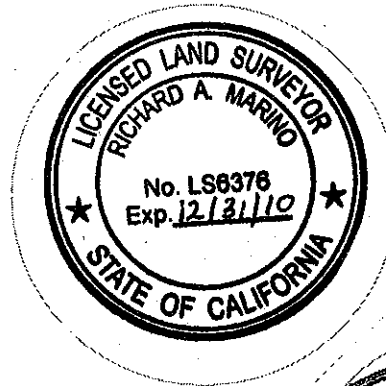
FOUND MONUMENTS TO SET S.W. COR LOT 10.

SURVEYOR'S STATEMENT

This Corner Record was prepared by me or under my direction in conformance with the Professional Land Surveyors' Act on DECEMBER 15, 2008.

Signed Richard A. Marino

L.S. or R.C.E. Number 6376 Expiration Date 12/31/10

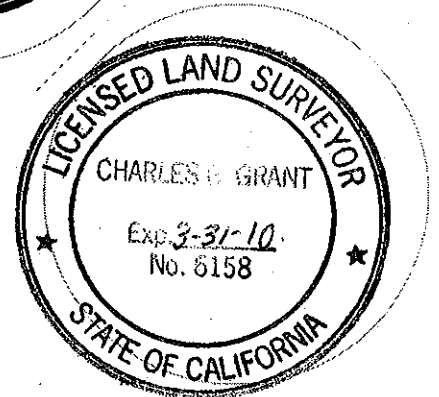


COUNTY SURVEYOR'S STATEMENT

This Corner Record was received \_\_\_\_\_ 20\_\_\_\_ and examined and filed FEB 15 2009.

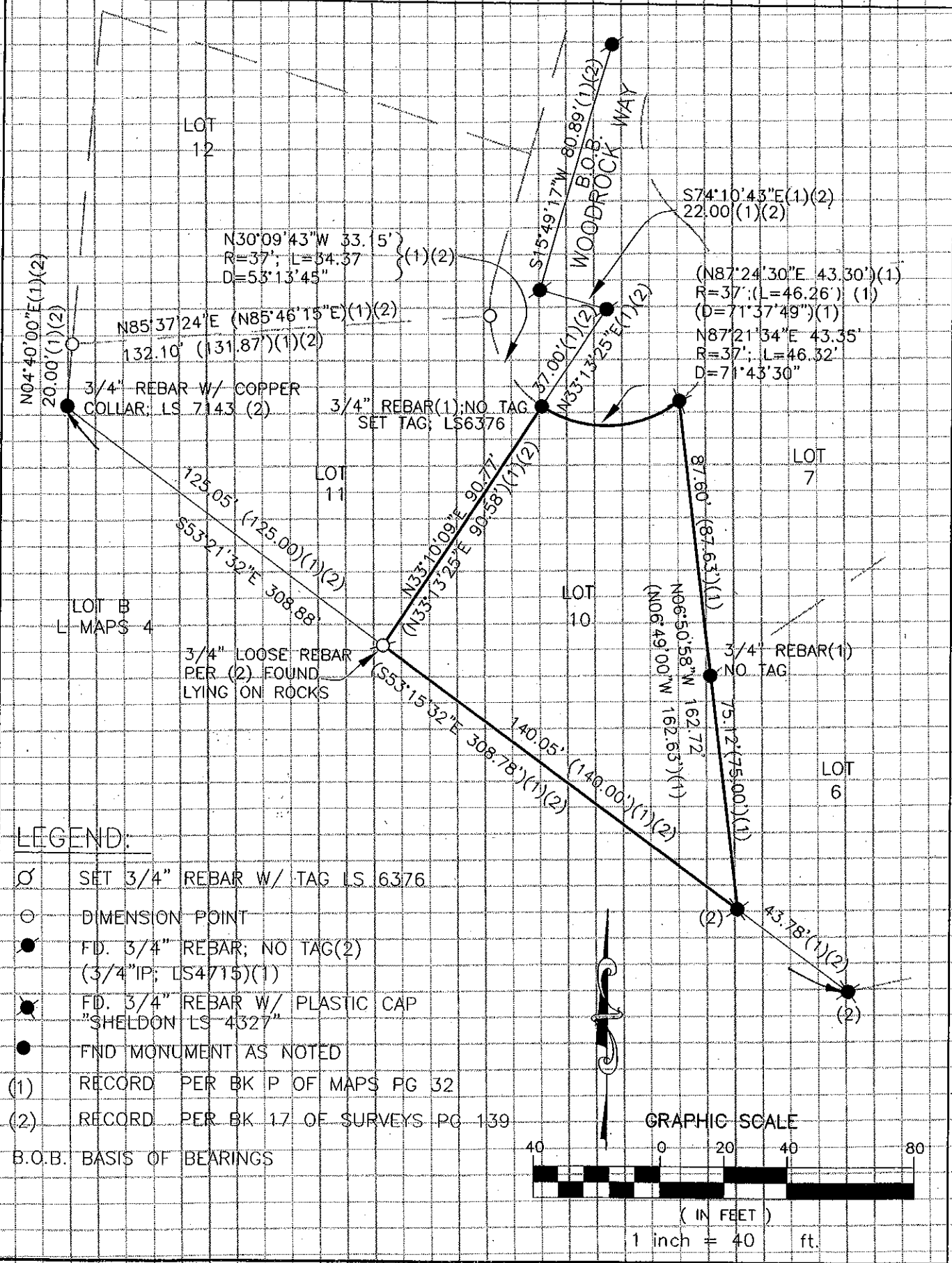
Signed Charles B. Grant Title COUNTY SURVEYOR

L.S. or R.C.E. Number 6158 Expiration Date 3-31-10



County Surveyor's Comment \_\_\_\_\_

BOOK 12 CORNER RECORDS PAGE 78



**LEGEND:**

- SET 3/4" REBAR W/ TAG LS 6376
- DIMENSION POINT
- FD. 3/4" REBAR; NO TAG (2)  
(3/4" IP; LS4715)(1)
- FD. 3/4" REBAR W/ PLASTIC CAP  
"SHELDON" LS 4327
- FND MONUMENT AS NOTED
- (1) RECORD PER BK P OF MAPS PG 32
- (2) RECORD PER BK 17 OF SURVEYS PG 139
- B.O.B. BASIS OF BEARINGS

