

CORNER RECORD

Document Number 20080091

City of _____

County of PLACER, California

Brief Legal Description PARCEL "A" 6PM64 NE1/4 SEC 1, T13N-
R7E W.D. M



T13N-R7E

CORNER TYPE

Government Corner Control
 Meander Property
 Rancho Other

Date of Survey 10-23-2008

COORDINATES(Optional)

N. _____
 E. _____
 Zone _____ NAD27 NAD83
 NAD83 Epoch _____
 Elevation _____
 Vert. Datum: NGVD29 NAV88
 Meas. Units: Metric Imperial

Corner - Left as found Found and tagged Established Reestablished Rebuilt

Identification and type of corner found: Evidence used to identify or procedure used to establish or reestablish the corner:

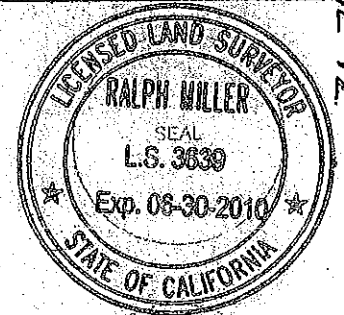
FOUND 2" PIPES PER 6PM64 FOR CONTROL
 TAGS & PLUG MISSING - ATTACHED LS 3639 tags

A description of the physical condition of the monument as found and as set or reset: SET REFERENCE
 MONUMENTS ON EASEMENT (AREAK") SIDELINE
 TO NORTH OF CENTER LINE. NEW ROAD HAS
 DESTROYED ORIGINAL CENTER LINE MONUMENTS
 SET REFERENCE MONUMENT ON EAST LINE PAR "A"

SURVEYOR'S STATEMENT

This Corner Record was prepared by me or under my direction in conformance with
 the Land Surveyor's Act of 10-24-2008.

Signed: Ralph Miller P.L.S. or R.C.E. Number LS3639



COUNTY SURVEYOR'S STATEMENT

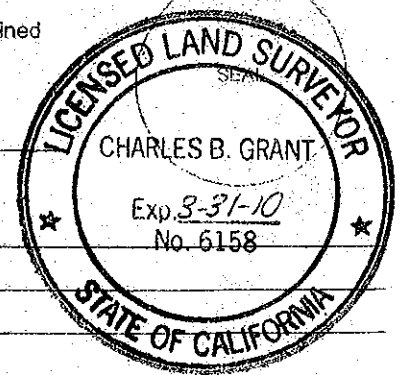
This Corner Record was received _____ and examined

and filed FEB. 15 2009

Signed: Charles B. Grant P.L.S. or R.C.E. Number 6158
 LICENSE EXPIRES 3-31-10

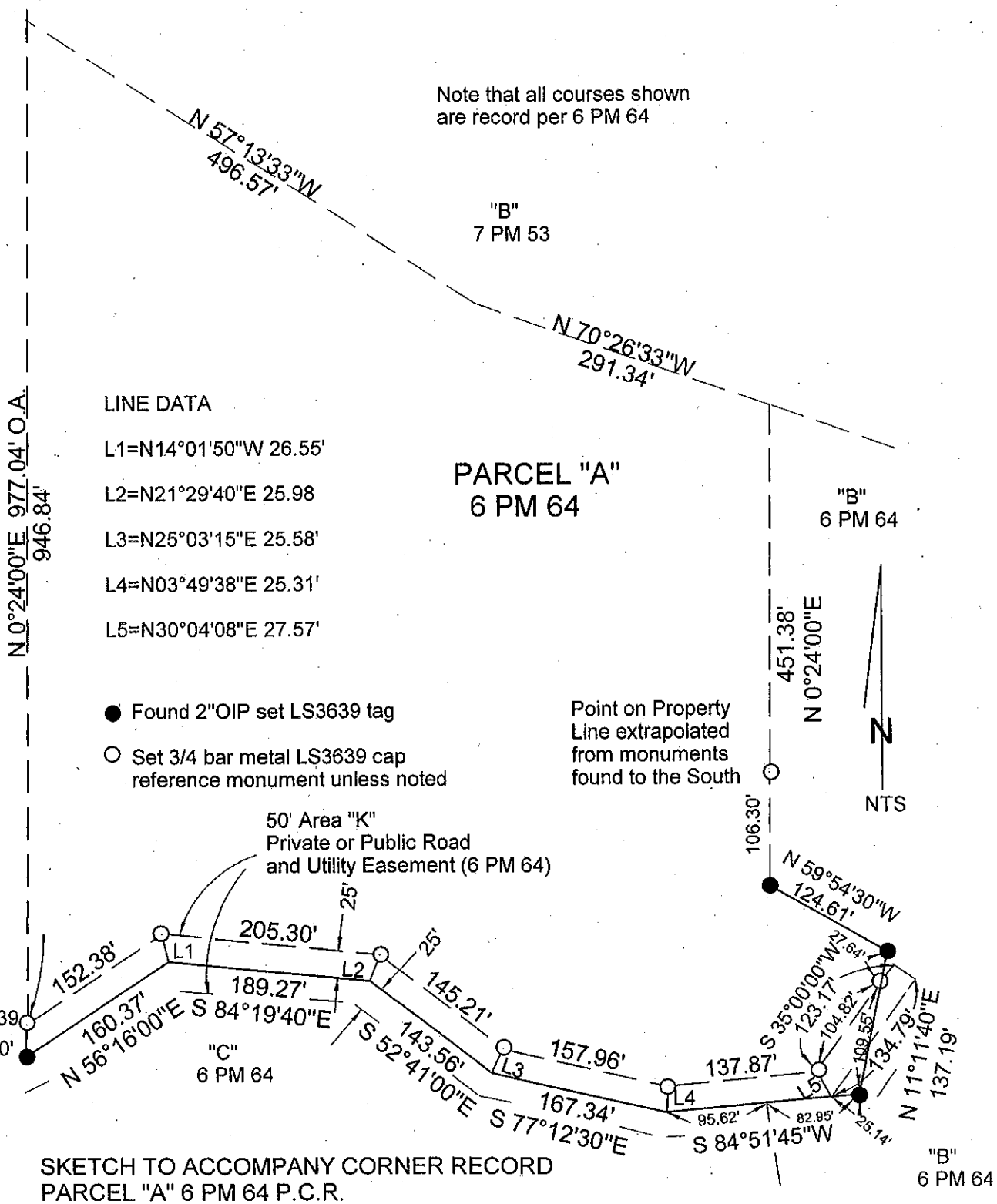
Title COUNTY SURVEYOR

County Surveyor's Comment _____



BOOK 12 CORNER RECORDS PAGE 12

Note that all courses shown are record per 6 PM 64



LINE DATA

- L1=N14°01'50"W 26.55'
- L2=N21°29'40"E 25.98
- L3=N25°03'15"E 25.58'
- L4=N03°49'38"E 25.31'
- L5=N30°04'08"E 27.57'

- Found 2"OIP set LS3639 tag
- Set 3/4 bar metal LS3639 cap reference monument unless noted

SKETCH TO ACCOMPANY CORNER RECORD
 PARCEL "A" 6 PM 64 P.C.R.
 NE 1/4 SEC. 1, T13N-R7E, M.D.M.
 Unincorporated Territory Placer County, CA
 Ralph Miller LS 3639 October 2008