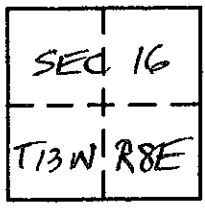


CORNER RECORD

COUNTY OF PLACER, CALIFORNIA

City of _____ Document Number 20070022
Brief Legal Description LOT 27, BOOK # MAPS; PAGE 38 O.R.P.C.



CORNER TYPE

COORDINATES (Optional)

Government Corner Control
Meander Property
Rancho Other
Date of Survey NOVEMBER 2007

N. _____
E. _____
Zone _____ Datum _____
Elev. _____

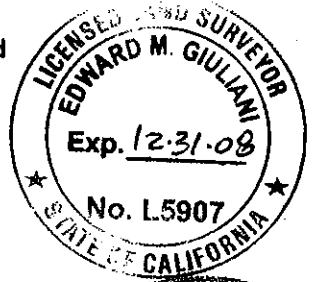
Corner — Left as found Found and tagged Established Reestablished Rebuilt

Identification and type of corner found: Evidence used to identify or procedure used to establish or reestablish corner:
USED RECORD DIMENSIONS AND FOUND MONUMENTS
PER # MAPS/39 O.R.P.C. TO REESTABLISH THE
SOUTHEAST AND SOUTHWEST PROPERTY CORNERS OF
LOT 127 AS SHOWN ON ACCOMPANYING PLAT

A description of the physical condition of the monument as found and as set or reset:
SET 3/4" REBAR WITH YELLOW PLASTIC
CAP MARKED "LS 5907"

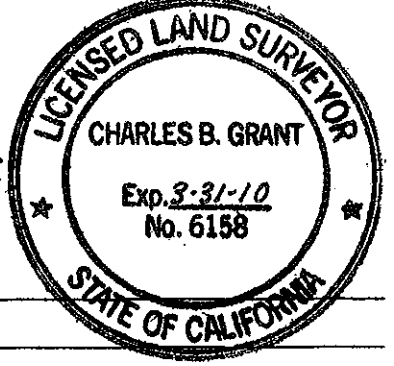
SURVEYOR'S STATEMENT

This Corner Record was prepared by me or under my direction in conformance with the Land Surveyors' Act on MARCH 24th 2008.
Signed Edward M. Giuliani L.S. or R.C.E. Number L5907



COUNTY SURVEYOR'S STATEMENT

This Corner Record was received _____ 20 _____ and examined
and filed MAY 6 2008.
Signed Charles B. Grant Title DEPUTY COUNTY SURVEYOR
LS 6158 LICENSE EXPIRES 3-31-10



County Surveyor's Comment _____

BOOK 12 CORNER RECORDS PAGE 13

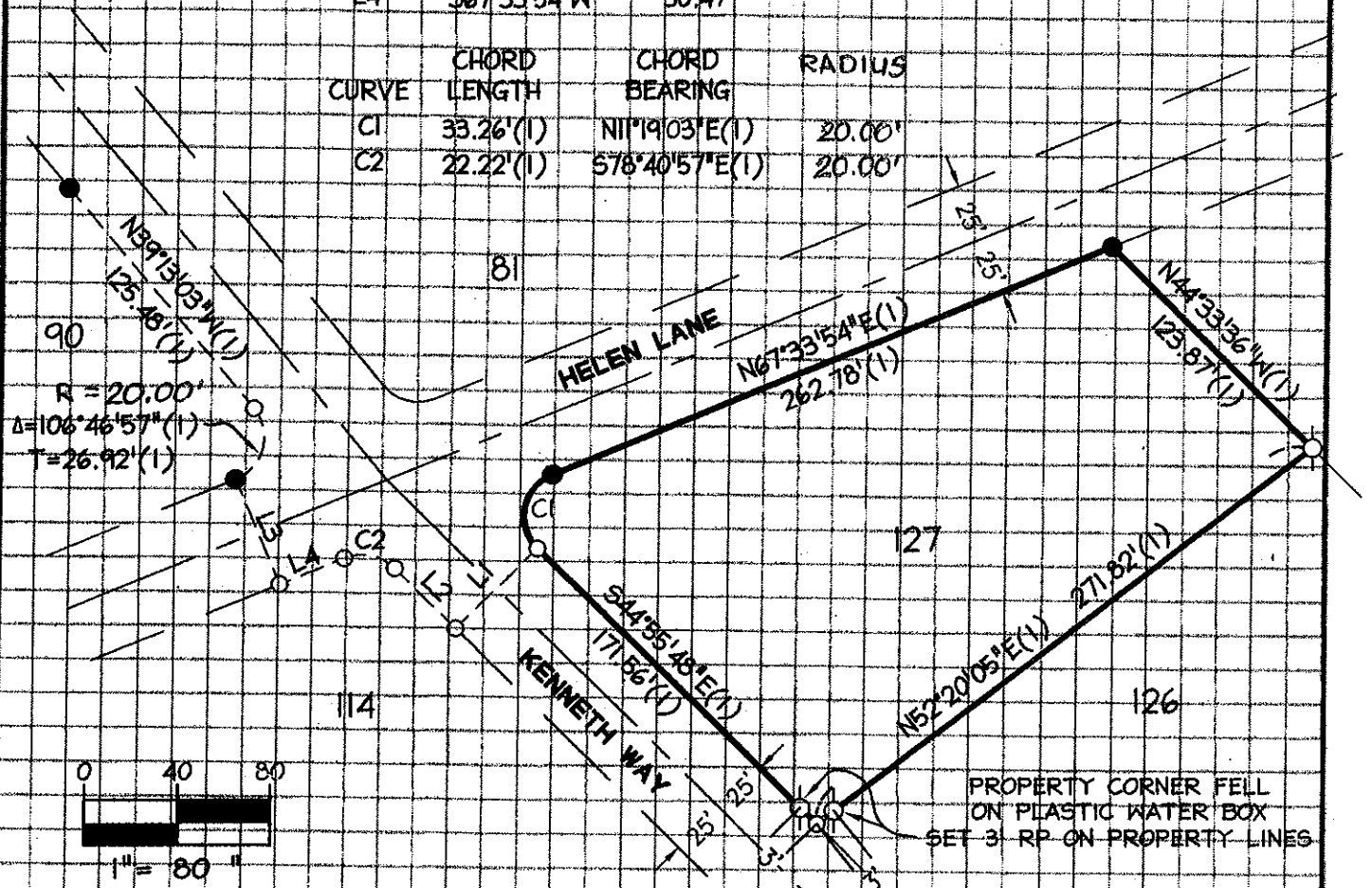
LOT 27 AS SHOWN ON THE MAP ENTITLED
 "CHRISTIAN VALLEY PARK, UNIT NO. 9"
 ON FILE IN BOOK 11 OF MAPS, PAGE 38 O.R.P.C
 IN THE UNINCORPORATED AREA OF PLACER COUNTY

LINE	BEARING	DISTANCE
L1	S45°04'22"W	50.00'
L2	S44°55'38"E	37.27'
L3	S22°26'06"E	50.00'
L4	S67°33'54"W	30.47'

CURVE	CHORD LENGTH	CHORD BEARING	RADIUS
C1	33.26'(1)	N11°19'03"E(1)	20.00'
C2	22.22'(1)	S78°40'57"E(1)	20.00'

BOOK 12 CORNER RECORDS PAGE 13

BOOK 12 CORNER RECORDS PAGE 13



LEGEND

- FOUND 1/2" IRON PIN PER H MAPS 38
- SET 3/4" IRON PIPE TAGGED LS 5907
- DIMENSION POINT