

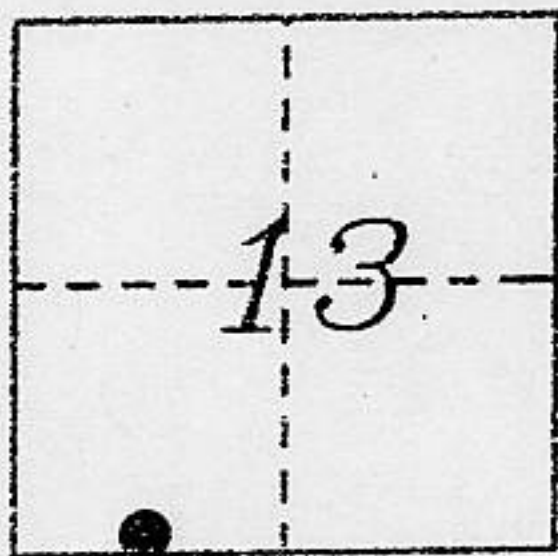
CORNER RECORD

COUNTY OF PLACER, CALIFORNIA

City of _____

Document Number _____

Brief Legal Description Lot 1, Talmont Estates Unit 1, Book "H" Maps 9



T.15N., R.16E. CORNER TYPE

COORDINATES (Optional)

Government Corner Control N. _____
 Meander Property E. _____
 Rancho Other Zone _____ Datum _____
 Date of Survey September 2001 Elev. _____

Corner— Left as found Found and tagged Established Reestablished Rebuilt

Identification and type of corner found: Evidence used to identify or procedure used to establish or reestablish corner:

● ~ found 3/4" bar with copper sleeve stamped LS 2515 unless otherwise noted.

A description of the physical condition of the monument as found and as set or reset:

∅ ~ set 5/8" rebar with 2" metal cap stamped LS 5886

SURVEYOR'S STATEMENT

This Corner Record was prepared by me or under my direction in conformance with the Land

Surveyor's Act on December 2001

Signed [Signature] L.S. or R.C.E. Number 5886
Thomas C. Buswell

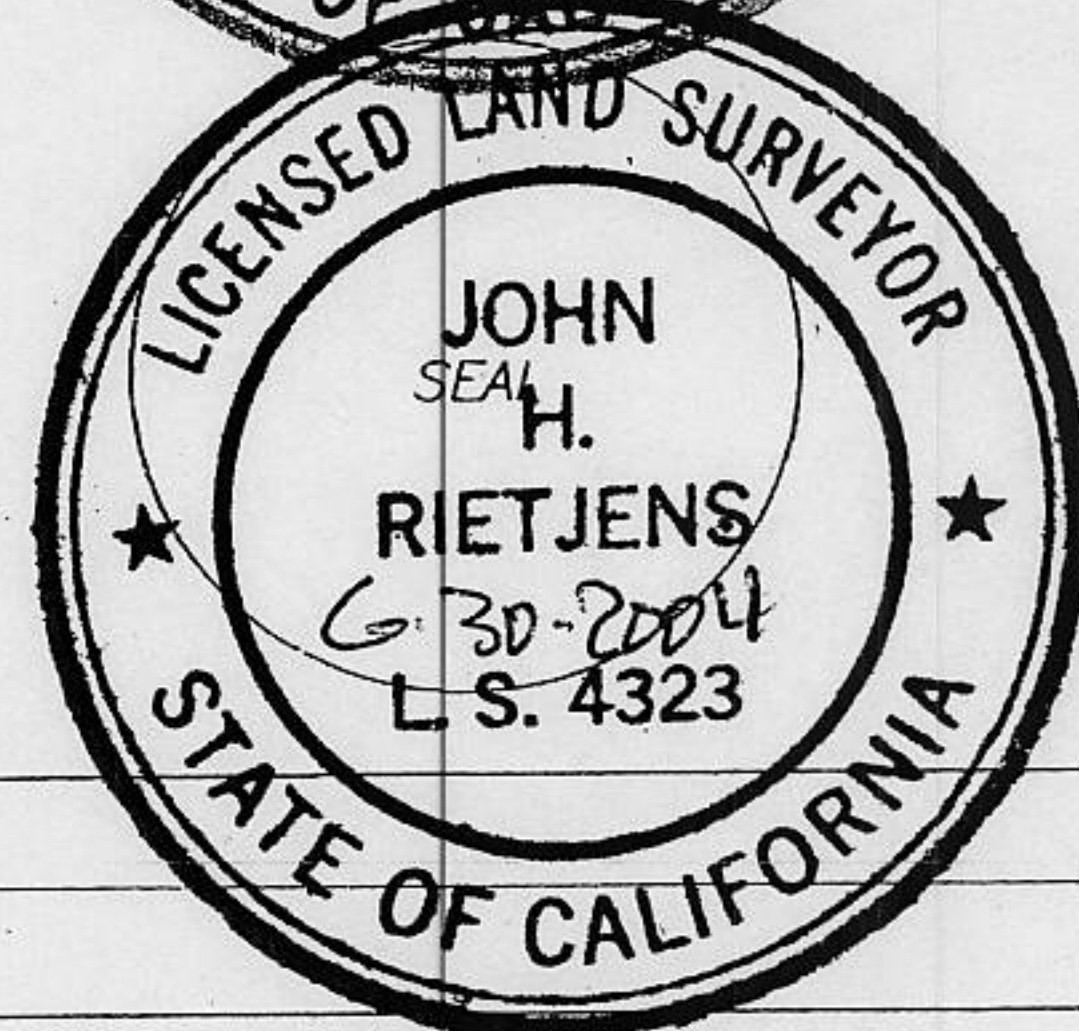
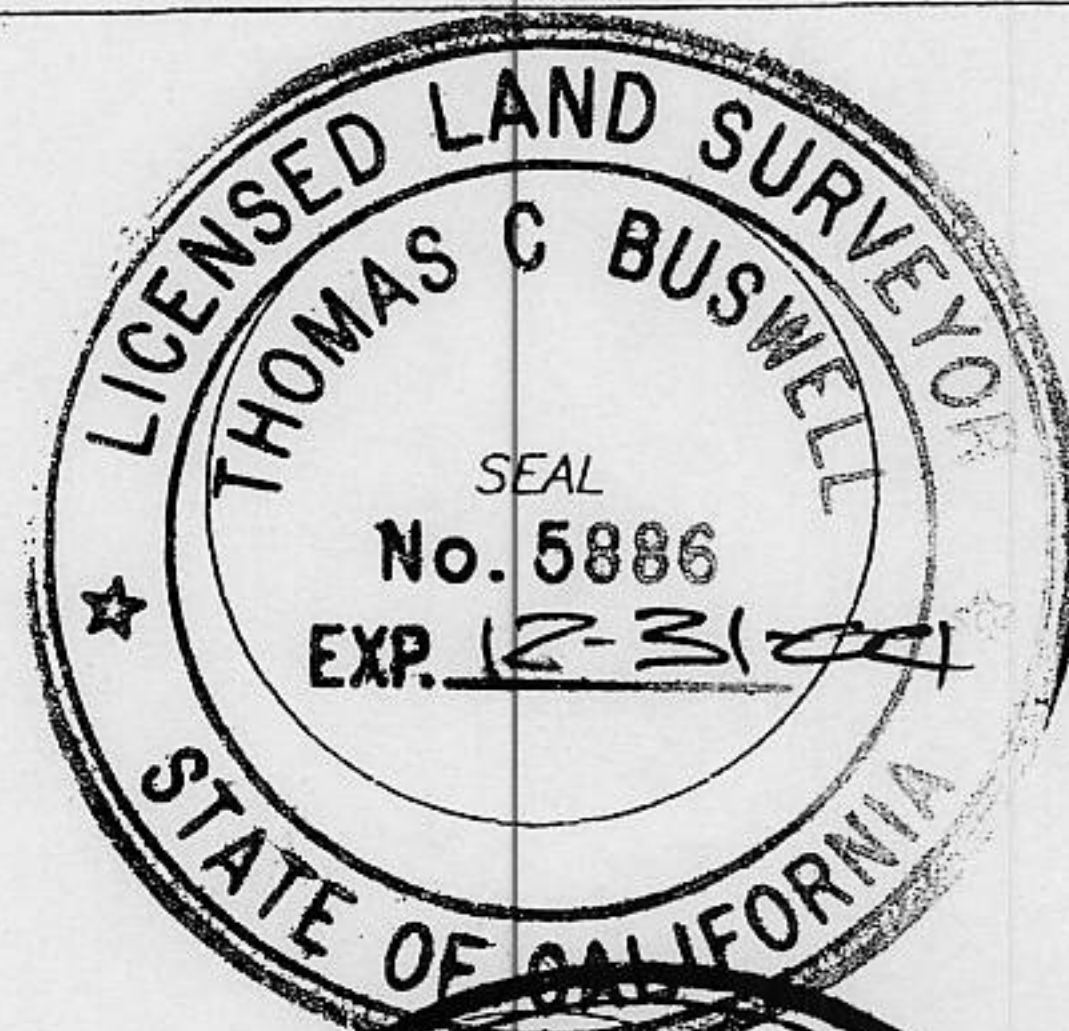
COUNTY SURVEYOR'S STATEMENT

This Corner Record was Received SEPT. 21, 20 01 and Examined

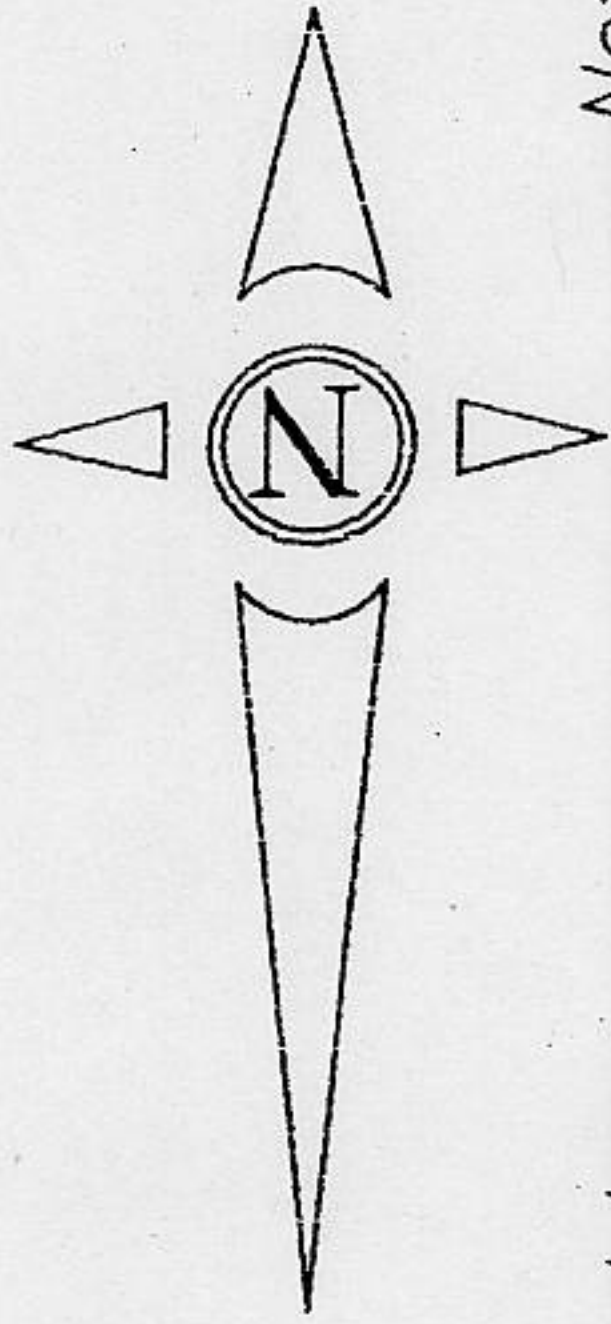
and filed MARCH 21, 20 02

Signed [Signature] Title COUNTY SURVEYOR

County Surveyor's Comment _____



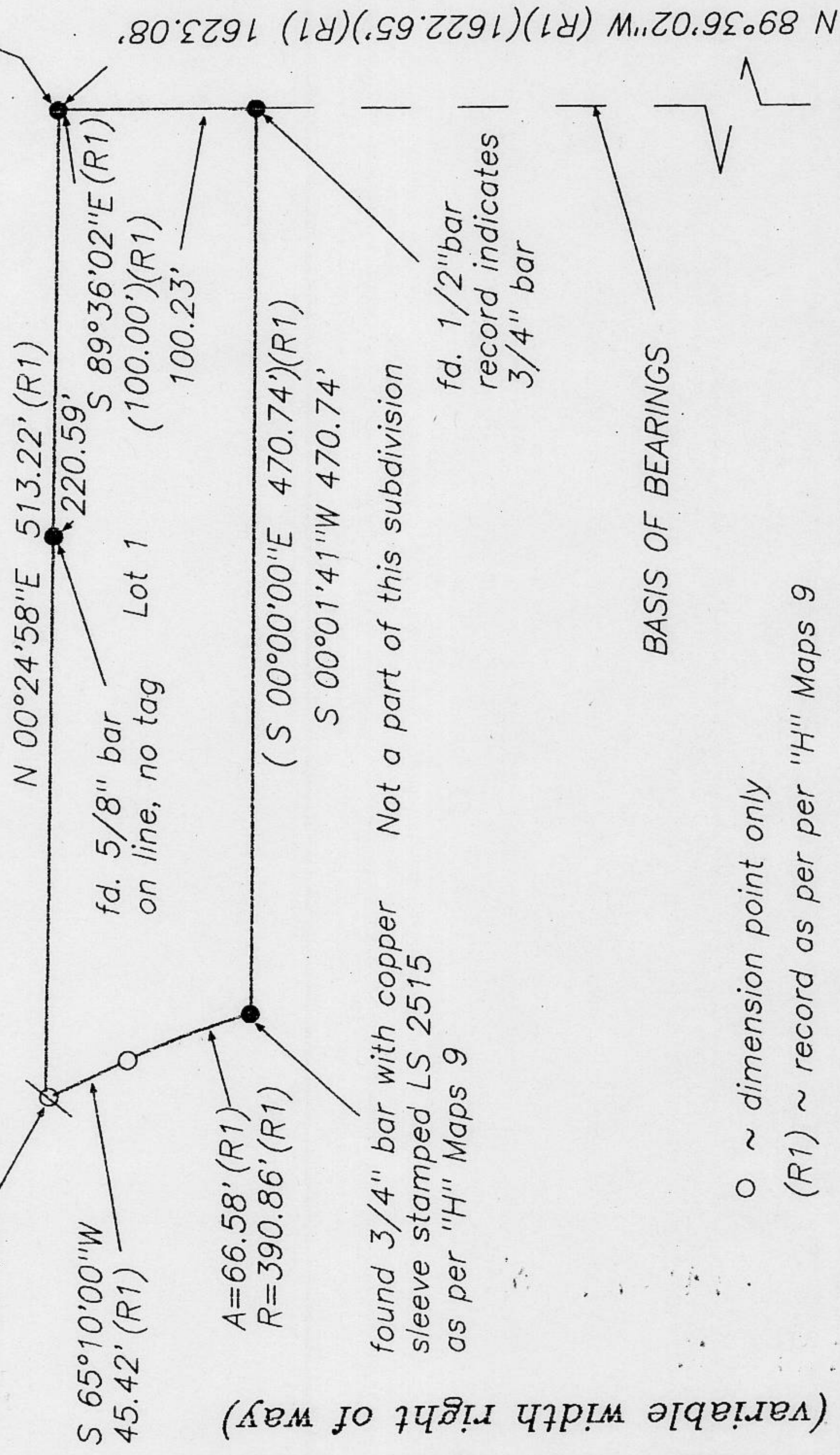
BOOK 7 CORNER RECORDS PAGE 57



SCALE 1" = 100'

established bar at record position

Not a part of this subdivision



fd. 3/4" bar with yellow plastic cap stamp illegible

S 65°10'00"W 45.42' (R1)

A=66.58' (R1)
R=390.86' (R1)

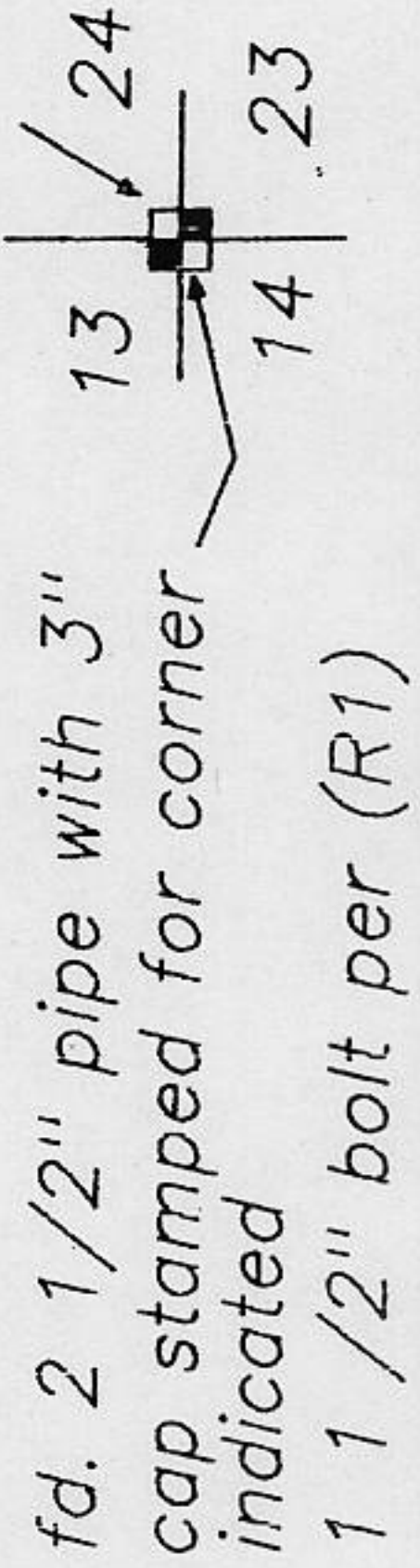
found 3/4" bar with copper sleeve stamped LS 2515 as per "H" Maps 9

Not a part of this subdivision

fd. 1/2" bar record indicates 3/4" bar

BASIS OF BEARINGS

o ~ dimension point only
(R1) ~ record as per "H" Maps 9



Tahoe Park Heights Drive

(variable width right of way)