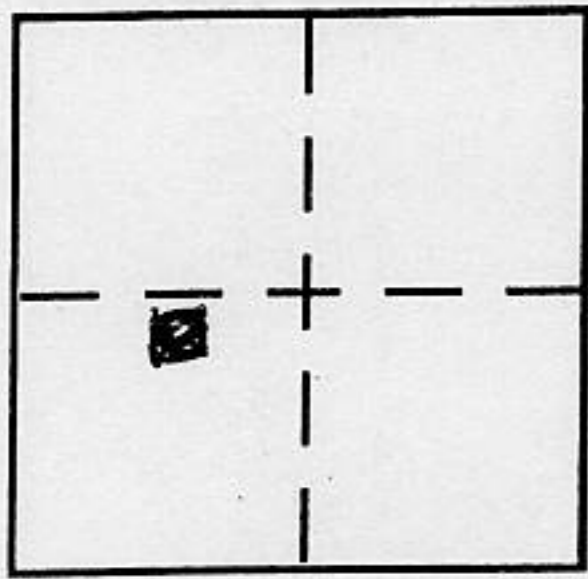


**CORNER RECORD**

Document Number \_\_\_\_\_

City of \_\_\_\_\_ County of Placer, California

Brief Legal Description Lot 17, Tahoe City Industrial Park, H/Maps/85 O.R.P.C.



Section 32

**CORNER TYPE**

**COORDINATES (Optional)**

T.16N Government Corner  Control   
 R.17E Meander  Property   
 Rancho  Other   
 MPB&M Date of Survey August 22, 2001

~~N. \_\_\_\_\_  
 E. \_\_\_\_\_  
 Zone NAD27  NAD83   
 NAD83 Epoch \_\_\_\_\_  
 Elev. \_\_\_\_\_  
 Vert. Datum: NGVD29  NAVD88   
 Meas. Units: Metric  Imperial~~

Corner - Left as found  Found and tagged  Established  Reestablished  Rebuilt

Identification and type of corner found: Evidence used to identify or procedure used to establish or reestablish the corner:

See sketch on Back

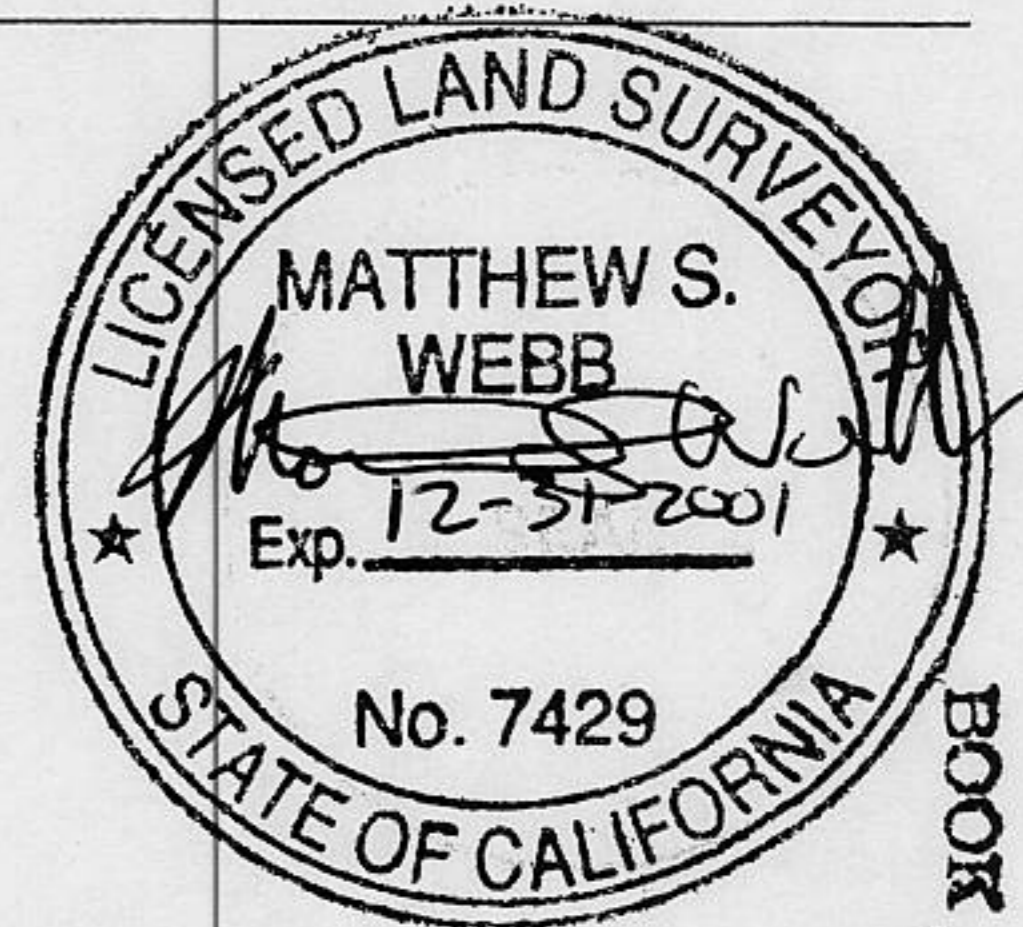
A description of the physical condition of the monument as found and as set or reset:

See sketch on Back

**SURVEYOR'S STATEMENT**

This Corner Record was prepared by me or under my direction in conformance with the Land Surveyor's Act on August 23, 2001

Signed Matthew S. Webb P.L.S. or R.C.E. No. 7429



**COUNTY SURVEYOR'S STATEMENT**

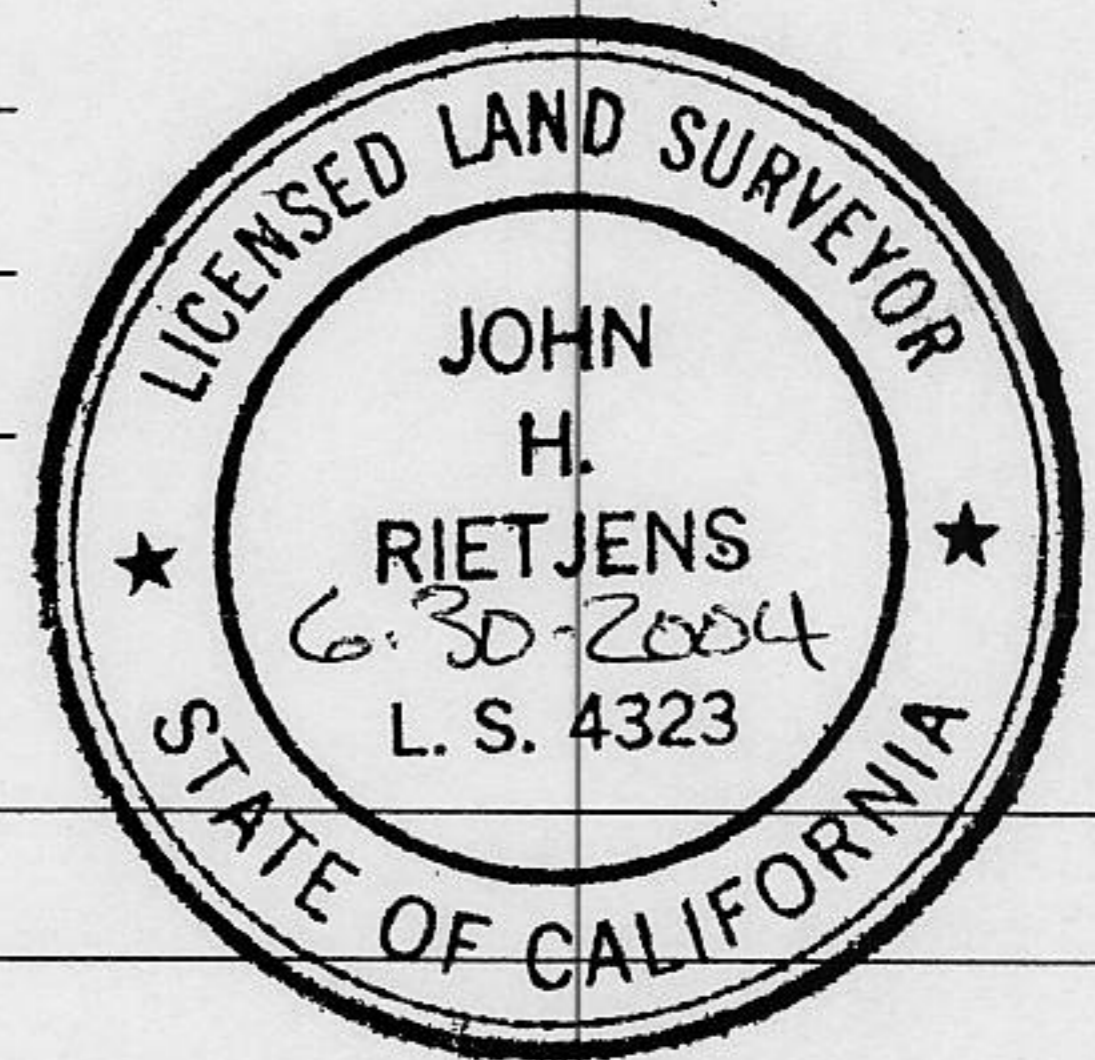
This Corner Record was received September 7, 2001

and examined and filed March 12, 2002

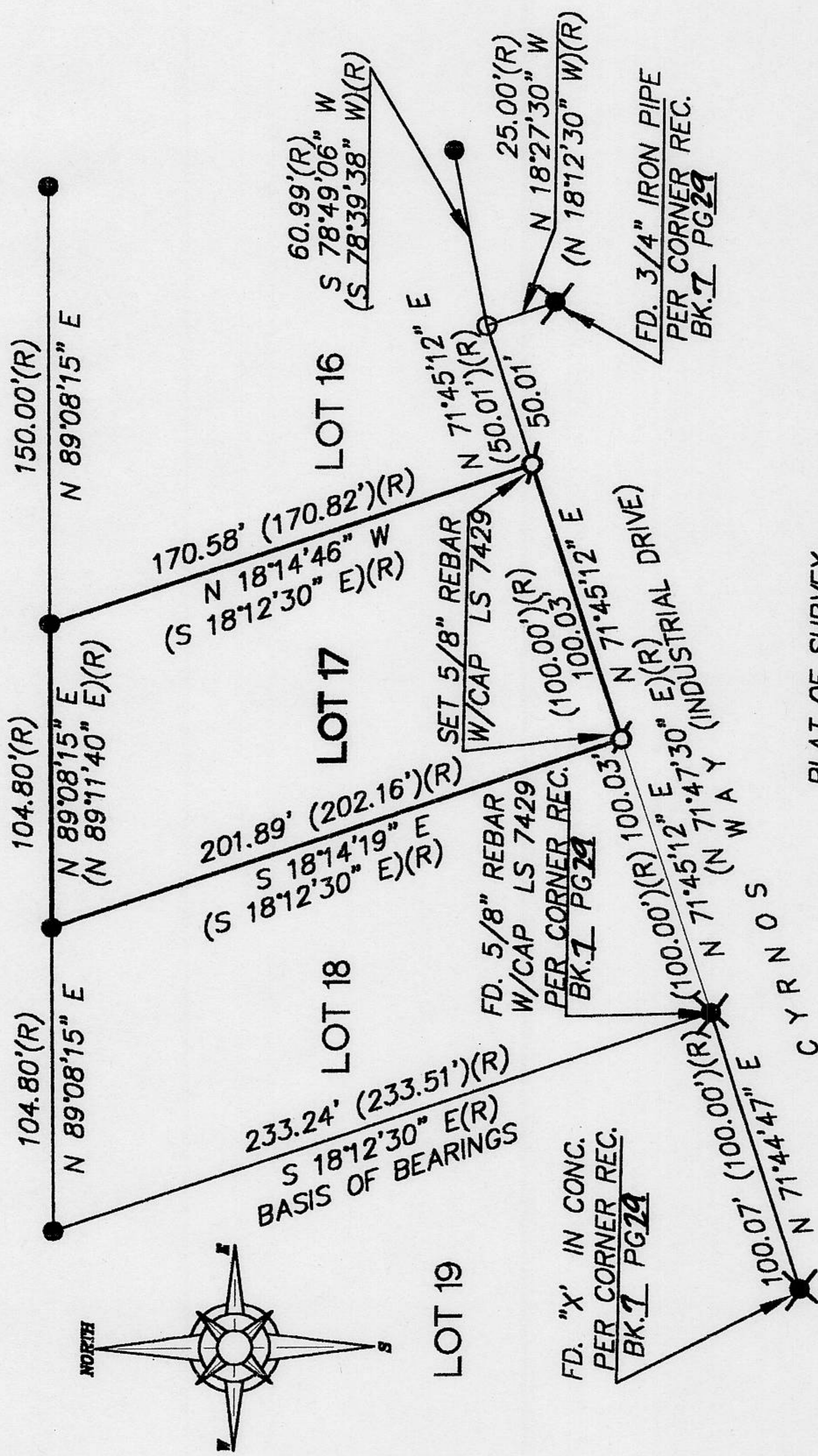
Signed John H. Rietjens P.L.S. or R.C.E. No. 4323

Title COUNTY SURVEYOR

County Surveyor's Comment \_\_\_\_\_



BOOK 7 CORNER RECORDS PAGE 30



PLAT OF SURVEY  
 LOT 17 TAHOE CITY INDUSTRIAL PARK SUBDIVISION  
 BOOK H, OF MAPS, PAGE 85, OFFICIAL RECORDS  
 PLACER COUNTY CALIFORNIA, SECTION 32,  
 TOWNSHIP 16, N., RANGE 17, E., M.D.B.&M  
 SCALE 1" = 60' DATE OF SURVEY: 8/22/2001

- ✕ FOUND MONUMENT AS NOTED
- FOUND 1/2" REBAR NO TAG  
PER H/MAPS/85 O.R.P.C.
- DIMENSION POINT ONLY
- (R) RECORD INFORMATION  
PER H/MAPS/85 O.R.P.C.