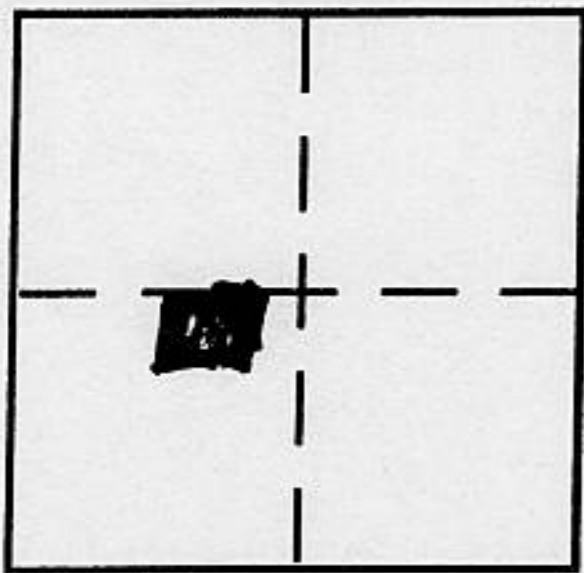


**CORNER RECORD**

Document Number \_\_\_\_\_

City of \_\_\_\_\_ County of Placer, California

Brief Legal Description Lot 19 Tahoe City Industrial Park H/Maps/85 O.R.P.C.



Sec. 32  
T. 16N.  
R. 17E  
MDBEM

**CORNER TYPE**

Government Corner  Control   
Meander  Property   
Rancho  Other   
Date of Survey October 1999

**COORDINATES (Optional)**

~~N. \_\_\_\_\_  
E. \_\_\_\_\_  
Zone NAD27  NAD83   
NAD83 Epoch \_\_\_\_\_  
Elev. \_\_\_\_\_  
Vert. Datum: NGVD29  NAVD88   
Meas. Units: Metric  Imperial~~

Corner - Left as found  Found and tagged  Established  Reestablished  Rebuilt

Identification and type of corner found: Evidence used to identify or procedure used to establish or reestablish the corner:

See Sketch on Back

A description of the physical condition of the monument as found and as set or reset:

See Sketch on Back

**SURVEYOR'S STATEMENT**

This Corner Record was prepared by me or under my direction in conformance with

the Land Surveyor's Act on August 23, 2001

Signed [Signature] P.L.S. or R.C.E. No. 7429



**COUNTY SURVEYOR'S STATEMENT**

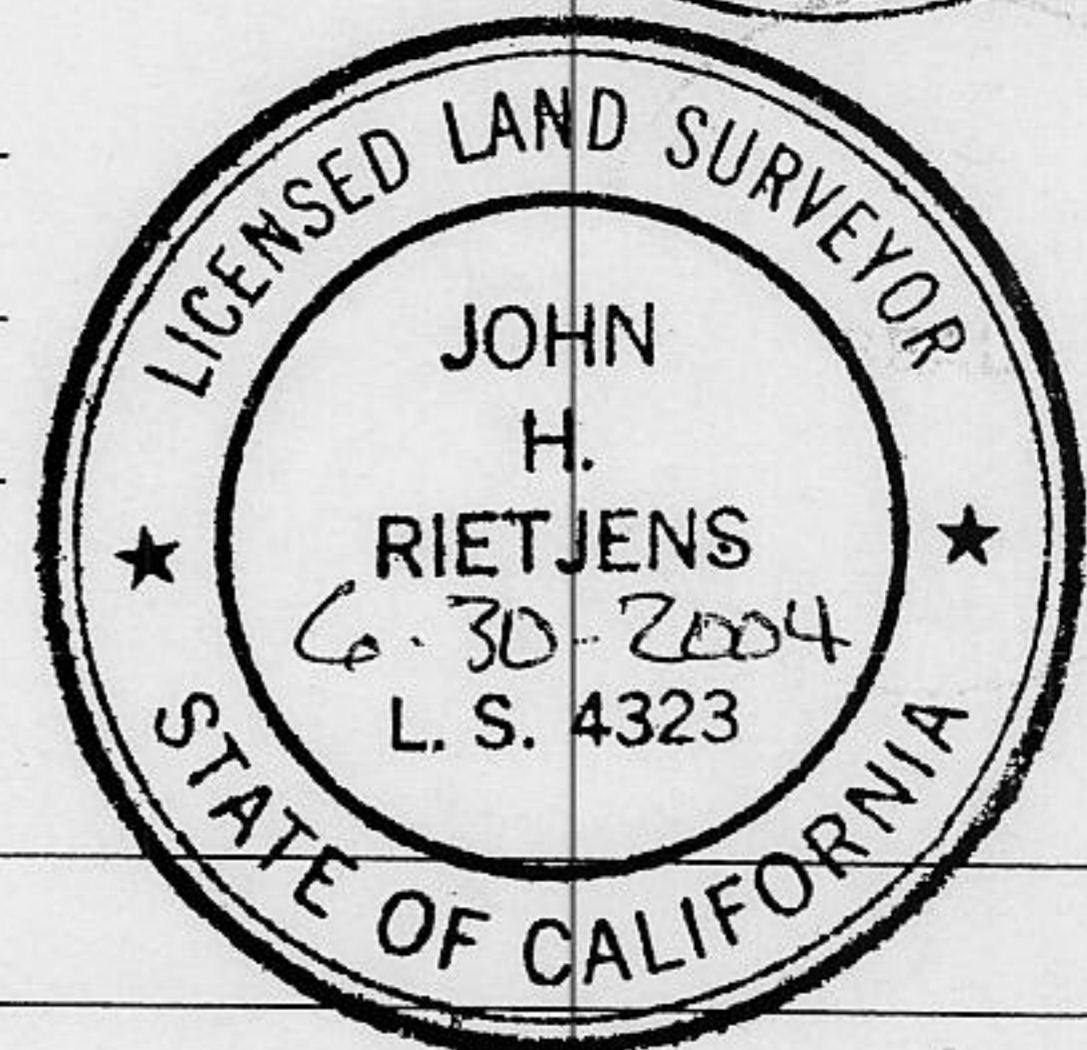
This Corner Record was received AUGUST 28, 2001

and examined and filed MARCH 12, 2002

Signed [Signature] P.L.S. or R.C.E. No. 4323

Title COUNTY SURVEYOR

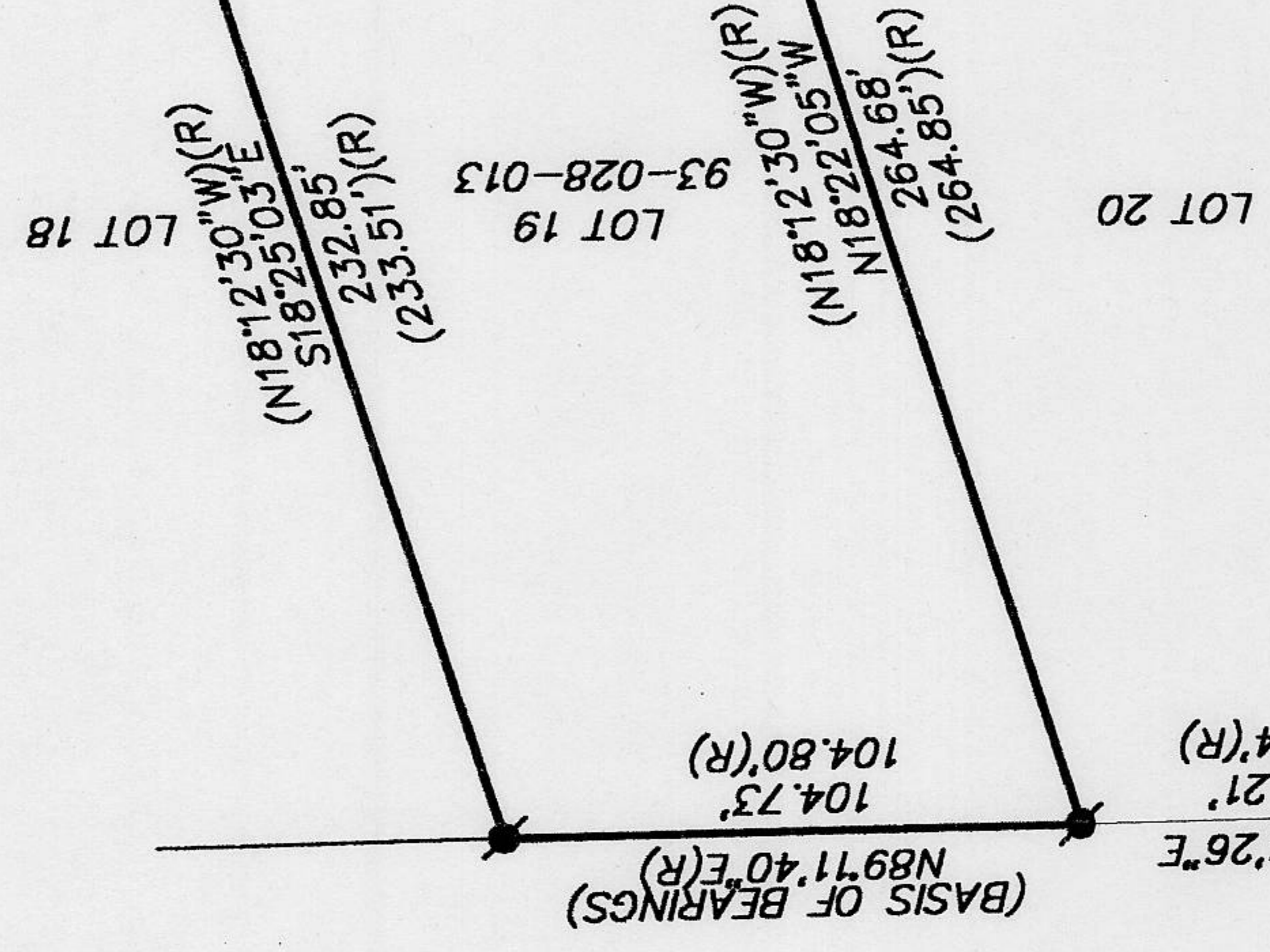
County Surveyor's Comment \_\_\_\_\_



BOOK 7 CORNER RECORDS PAGE 29

# PLAT OF SURVEY

LOT 19, TAHOE CITY INDUSTRIAL PARK SUBDIVISION  
 LOCATED IN BOOK H OF MAPS AT PAGE 85 O.R.P.C.  
 SECTION 32, TOWNSHIP 16 NORTH, RANGE 17 EAST, M.D.B. & M.  
 COUNTY OF PLACER  
 CALIFORNIA  
 OCTOBER, 1999



- SET: 5/8" REBAR TAGGED LS #7429
- ⊗ SET: X IN CONCRETE
- FOUND: 1/2" REBAR (NO TAG)
- ⊗ FOUND: 3/4" IRON PIPE
- FOUND: 1-1/4" IRON PIPE LS 3229 (R)
- (R) RECORD PER H/MAPS/85 ORPC

