

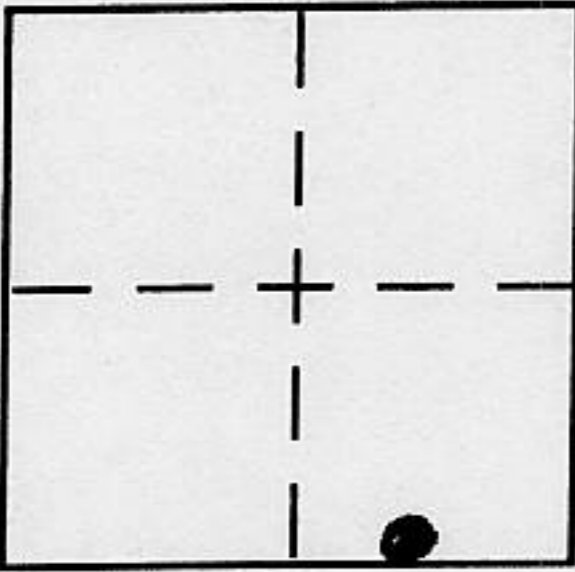
CORNER RECORD

Document Number _____

City of _____

County of PLACER, California

Brief Legal Description LOTS 71 AND 72 PONDEROSA PALISADES UNIT NO. 2
BK. "H" MAPS PG. 84 P.C.R.



S. 15
T. 17N.
R. 16E.
M.D.M.

CORNER TYPE

- Government Corner Control
- Meander Property
- Rancho Other
- Date of Survey 4-27-00

COORDINATES (Optional)

N. _____
 E. _____
 Zone _____ NAD27 NAD83
 NAD83 Epoch _____
 Elev. _____
 Vert. Datum: NGVD29 NAVD88
 Meas. Units: Metric Imperial

Corner - Left as found Found and tagged Established Reestablished Rebuilt

Identification and type of corner found: Evidence used to identify or procedure used to establish or reestablish the corner:

● = FOUND 1/2" REBAR, NO TAG, PER H/MAPS/84

A description of the physical condition of the monument as found and as set or reset:

⊙ = SET 3/4" IRON PIPE w/PLASTIC PLUG L.S. 5549

J.N. 0078

SURVEYOR'S STATEMENT

This Corner Record was prepared by me or under my direction in conformance with the Land Surveyor's Act on APRIL 27 2000

Signed Charles R. Sage P.L.S or R.C.E. No. L.S. 5549



COUNTY SURVEYOR'S STATEMENT

This Corner Record was received July 5, 2000

and examined and filed DECEMBER 18, 2001

Signed John H. Rietsjens P.L.S or R.C.E. No. 4323

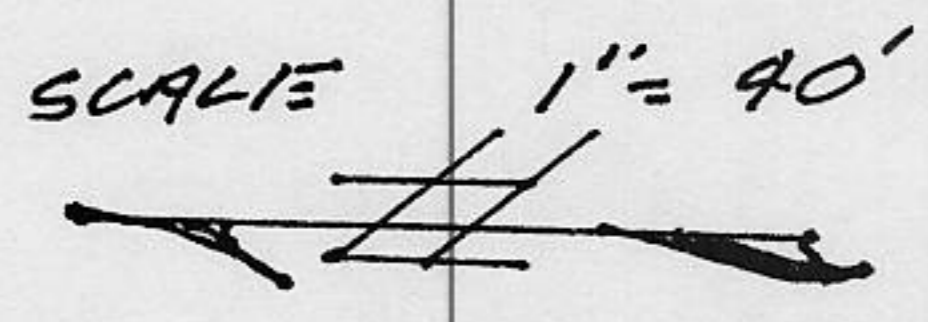
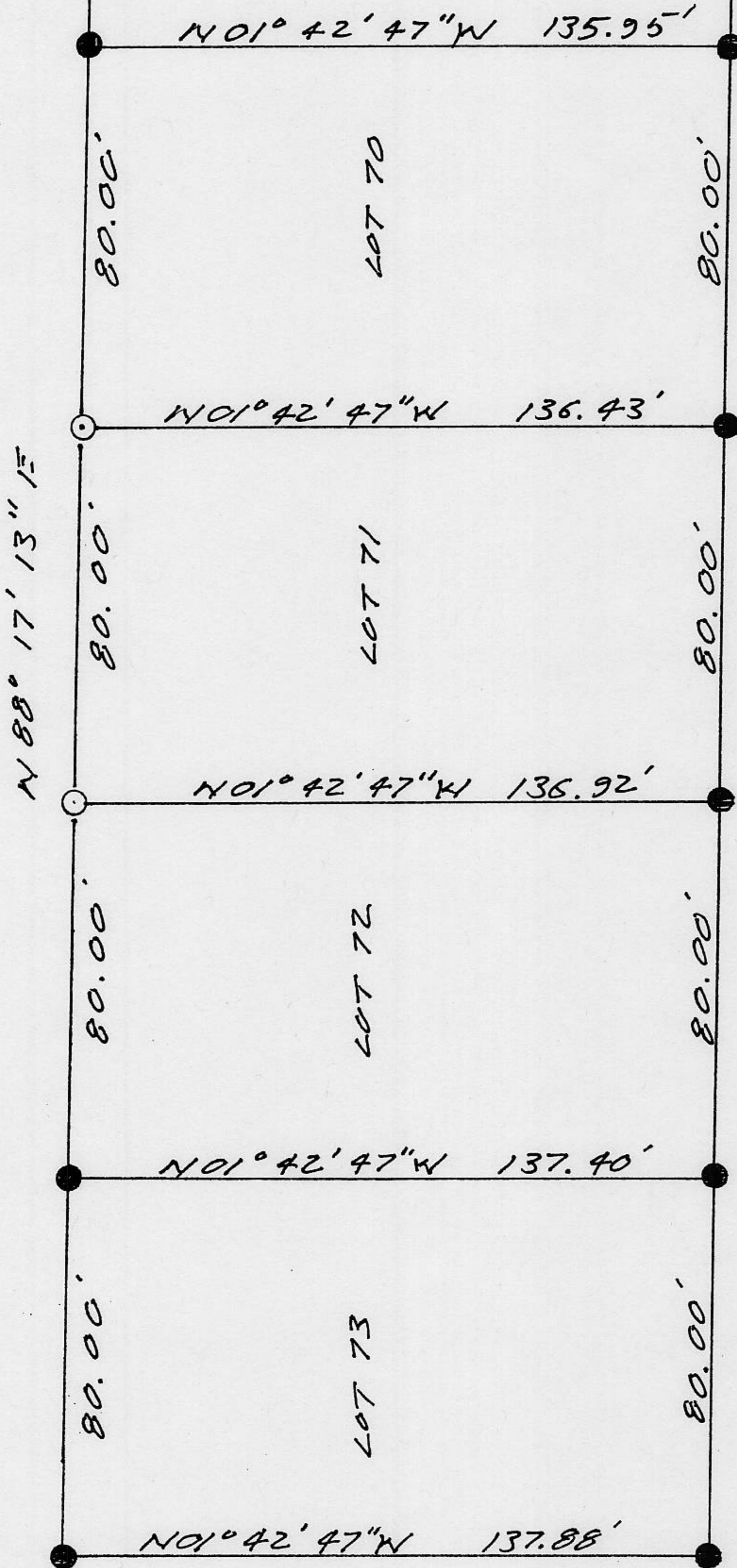
Title COUNTY SURVEYOR

County Surveyor's Comment _____



BOOK 7 CORNER RECORDS PAGE 11

SILVER FIR DRIVE



N 87° 56' 27" E
PARCEL "C" 13/PM/122

NOTE: THE BEARINGS AND DISTANCES SHOWN ARE RECORD PER "H" MAPS/84. NO MATERIAL DISCREPANCIES WITH RECORD INFORMATION WERE FOUND.