

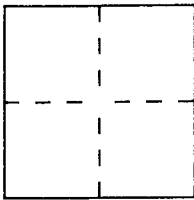
CORNER RECORD

Document Number _____

City of ROCKLIN

County of PLACER, California

Brief Legal Description PORTION OF SEC. 21, T.11N., R.7E., M.D.B. & M.



CORNER TYPE

COORDINATES (Optional)

Government Corner Control
Meander Property
Rancho Other
Date of Survey 7-29-93

N. _____
E. _____
Zone _____ Datum _____
Elev. _____

Corner — Left as found Found and tagged Established Reestablished Rebuilt

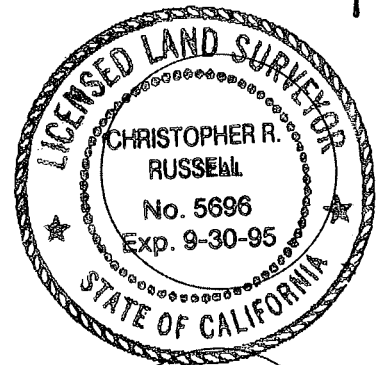
Identification and type of corner found: Evidence used to identify or procedure used to establish or reestablish the corner:
CORNERS RESET FROM FOUND MONUMENTS AS SHOWN ON
12 RS 85, PCR. SEE REVERSE

A description of the physical condition of the monument as found and as set or reset: SEE REVERSE

SURVEYOR'S STATEMENT

This Corner Record was prepared by me or under my direction in conformance with the Land Surveyors' Act on AUGUST 31 1993.

Signed Christopher Russell S. or ~~E.~~ Number 5696

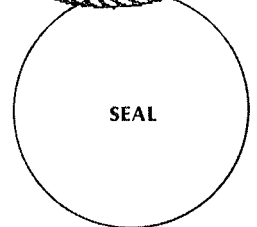


COUNTY SURVEYOR'S STATEMENT

This Corner Record was received SEPT 2 1993 and examined

and filed SEPT 29 1993.

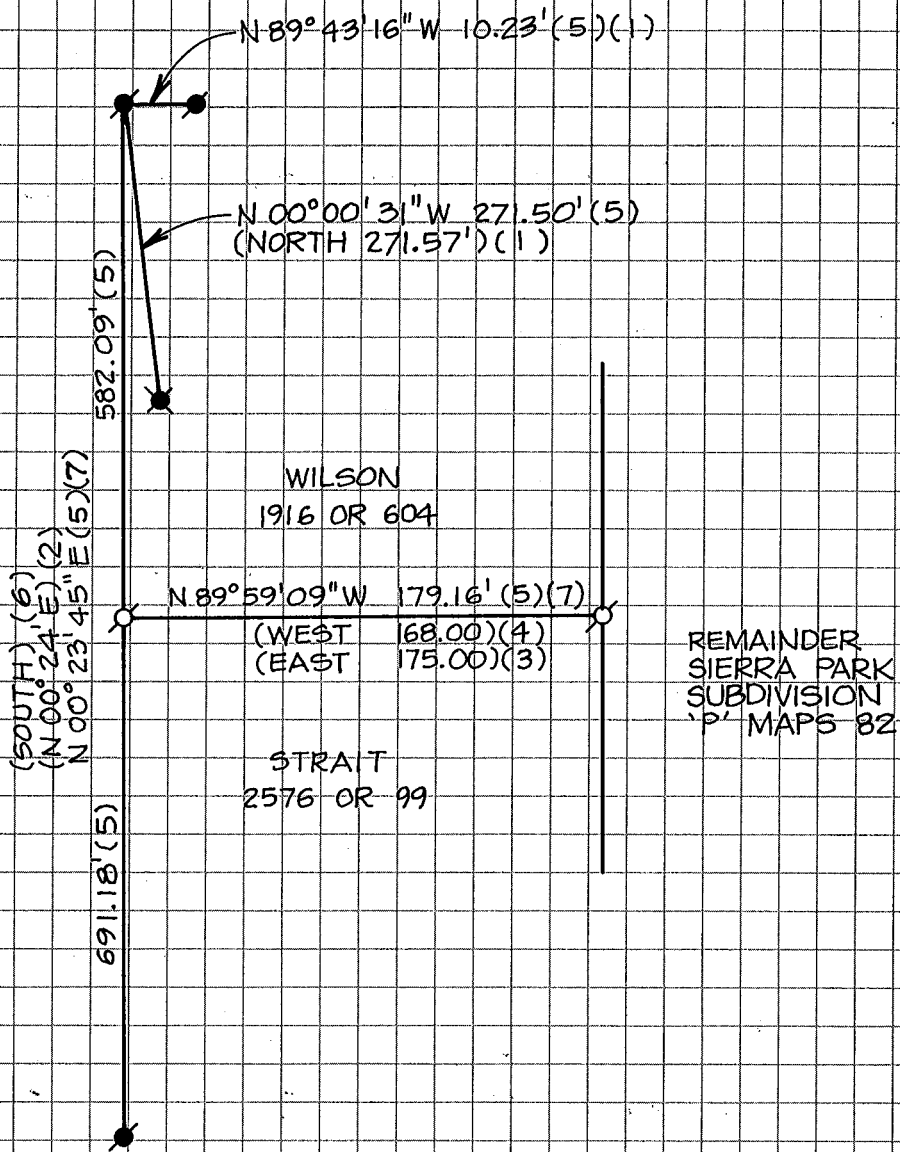
Signed John Russell Title DEPUTY COUNTY SURVEYOR



County Surveyor's Comment _____

BOOK 3 CORNER RECORDS PAGE 181

ROCKLIN ROAD D-2028



LEGEND

FND 3/4" IP NO TAG FER (5)	●
FND 3/4" REBAR NO TAG FER (5)	⊗
SET 5/8" REBAR W/ PLASTIC CAP "L.S. 5696"	○
RECORD PER BOOK "P" OF MAPS, PG. 82	(1)
RECORD PER DECREE 454 OR 307	(2)
RECORD PER 2576 OR 99	(3)
RECORD PER 1916 OR 604	(4)
RECORD PER 2 RS 85	(5)
RECORD PER 658 OR 626	(6)
RECORD PER INSTRUMENT NO. 91-048877	(7)