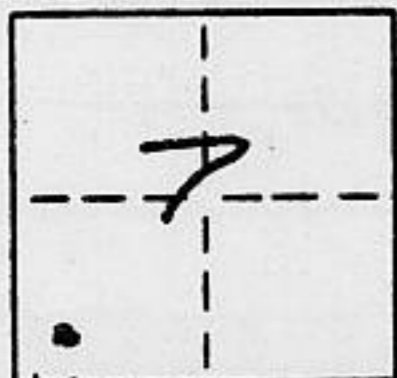


CORNER RECORD

293.01

COUNTY OF PLACER T. 15N R. 17E MD MERIDIAN CALIFORNIA

CORNER TYPE: GOV'T. CORNER MEANDER RANCHO CONTROL OTHER
 CORNER IDENTIFICATION - DATE OF VISIT JULY 17 1988



LOT 28, COMSTOCK ACRES SUBDIVISION AS PER F MAPS 53

CORNER - LEFT AS FOUND FOUND AND TAGGED REESTABLISHED OBLITERATED CORNER REBUILT

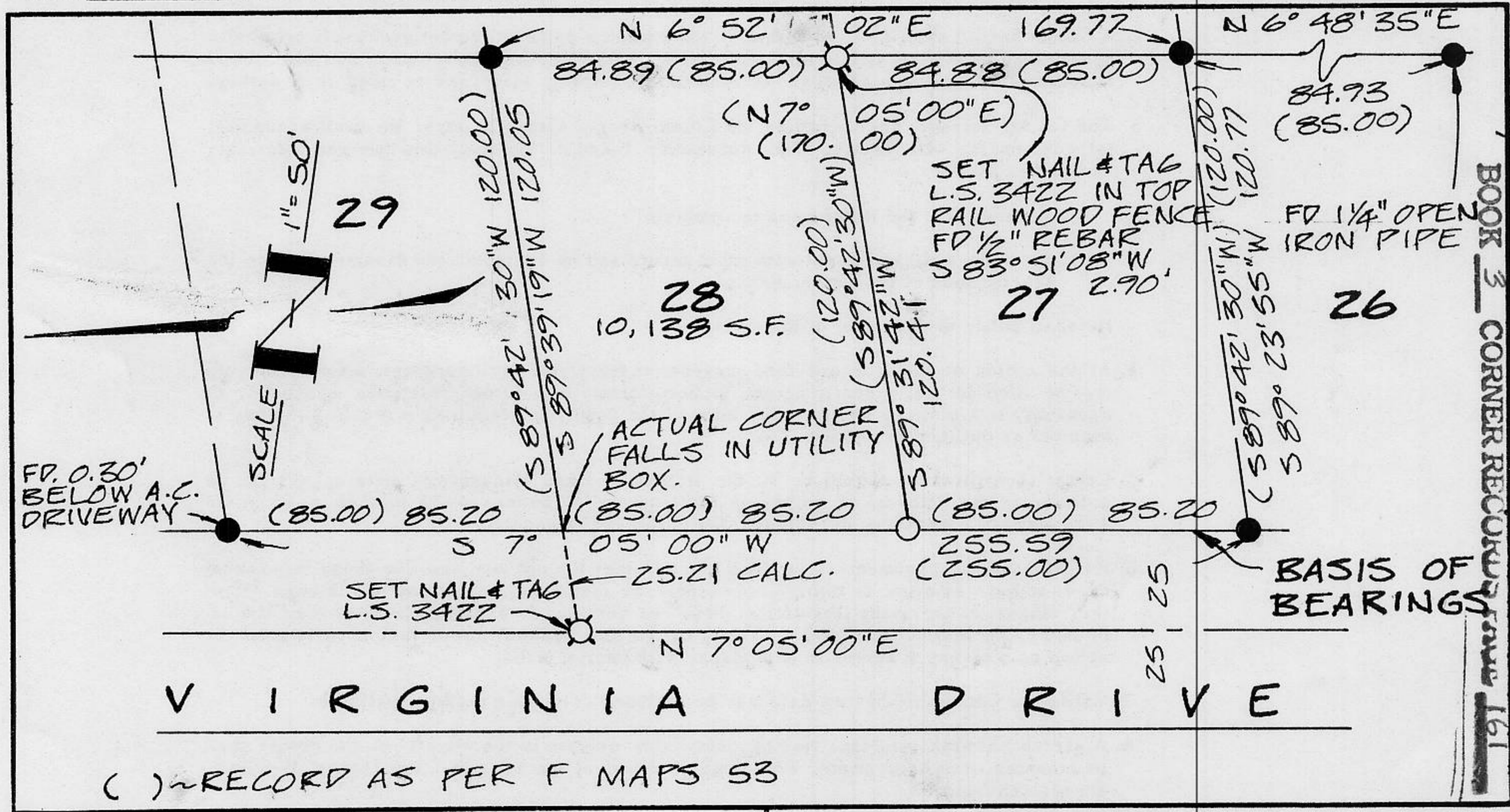
PHYSICAL DESCRIPTION OF CORNER FOUND: EVIDENCE AND METHOD USED TO IDENTIFY OR REESTABLISH _____

● ~ FOUND 1/2" IRON PINS (REBAR) AS PER THAT CERTAIN MAP OF COMSTOCK ACRES SUBDIVISION FILED IN BOOK "F" OF MAPS AT PAGE 53 IN THE OFFICE OF THE PLACER CO. CALIFORNIA RECORDER, UNLESS OTHERWISE NOTED.

PHYSICAL DESCRIPTION OF MONUMENTS REBUILT OR PERPETUATED _____

○ ~ SET 5/8" REBAR WITH YELLOW PLASTIC CAP STAMPED L.S. 3422 UNLESS OTHERWISE NOTED.

CALIFORNIA COORDINATE SYSTEM ORDER: FIRST SECOND THIRD
 STATIONS USED: NGS (USC & GS) STATE COUNTY OTHER STATION _____ STATION _____
 ZONE _____ ELEVATION _____ NORTHINGS (Y) _____ EASTINGS (X) _____



SURVEYOR'S CERTIFICATE

THIS CORNER RECORD WAS PREPARED BY ME OR UNDER MY DIRECTION IN CONFORMANCE WITH THE LAND SURVEYORS ACT ON August 12 1988

SIGNED: Jerry W. Tiffin

L.S. or R.C.E. No. L.S. 3422



COUNTY SURVEYOR'S CERTIFICATE

THIS CORNER RECORD WAS RECEIVED 5/31 1989 AND EXAMINED AND FILED 6/15/89 1989

BY: John R. Ruskens
 TITLE: DEPUTY COUNTY SURVEYOR

DOCUMENT No. _____
 STATEMENT ON BACK OF SHEET

YES NO

J.N. 293.01