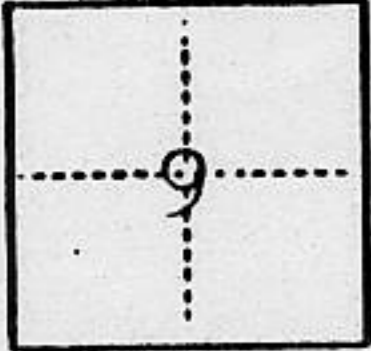


CORNER RECORD

COUNTY OF Placer T. 16 N. R. 11 E. M.D.M. MERIDIAN CALIFORNIA

CORNER TYPE: GOV'T. CORNER MEANDER RANCHO CONTROL OTHER
CORNER IDENTIFICATION — DATE OF VISIT Oct. 28, 1986



CORNER — LEFT AS FOUND FOUND AND TAGGED REESTABLISHED OBLITERATED CORNER REBUILT

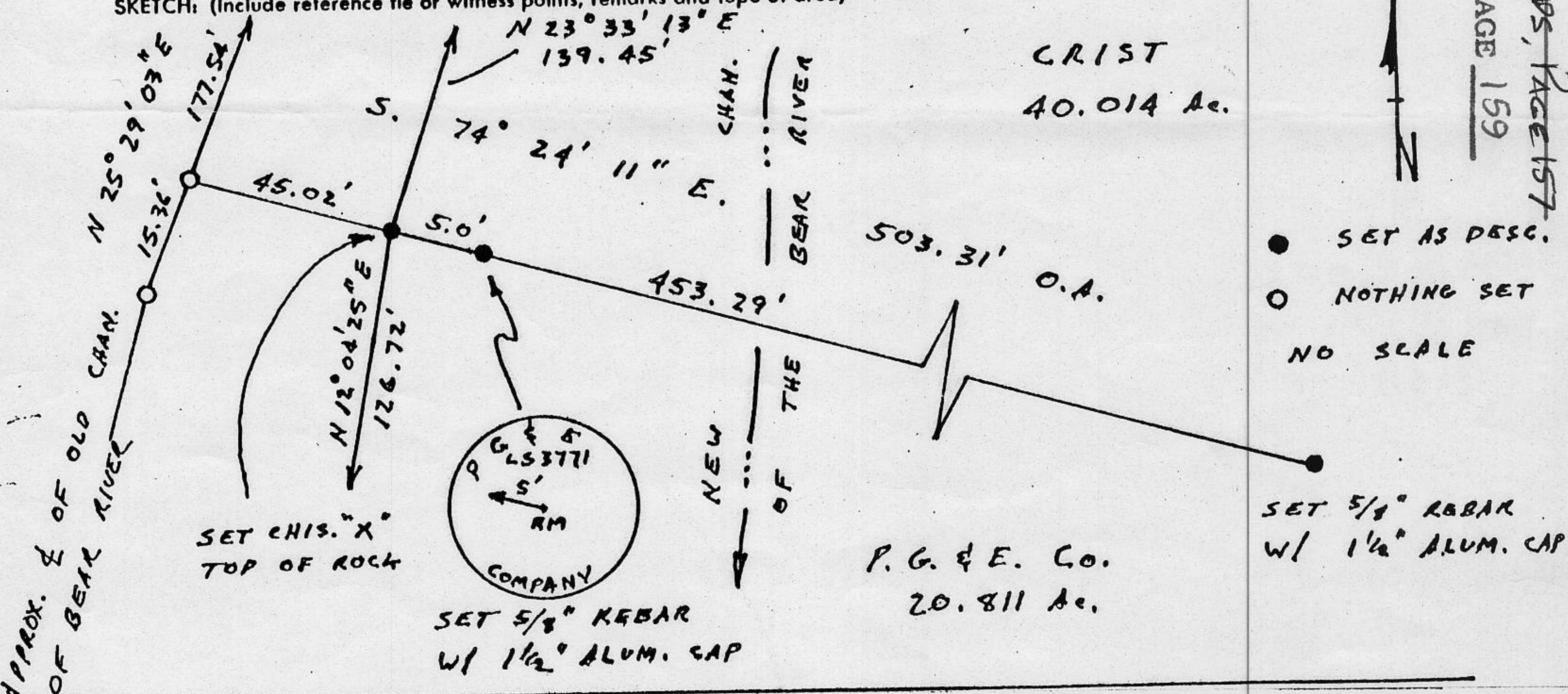
PHYSICAL DESCRIPTION OF CORNER FOUND, EVIDENCE AND METHOD USED TO IDENTIFY OR REESTABLISH
These two corners set in Nov. 1984, per R/S #1084 recorded in Book 9 of Surveys at Page 151, were destroyed by a washout early in 1986. They were reestablished using control points used to set the original corners.

PHYSICAL DESCRIPTION OF MONUMENTS REBUILT OR PERPETUATED
At the SW corner of the Crist property, set a chisled "x" on top of a large rock at ground level, and set a Reference Monument S.74 23' 11"E., 5.0 ft., a 5/8" rebar with 1 1/2" alum. cap stamped as shown.

CALIFORNIA COORDINATE SYSTEM ORDER: FIRST SECOND THIRD
STATIONS USED: NGS (USC & GS) STATE COUNTY OTHER STATION _____ STATION _____
ZONE _____ ELEVATION _____ NORTHINGS (Y) _____ EASTINGS (X) _____

(Fold)

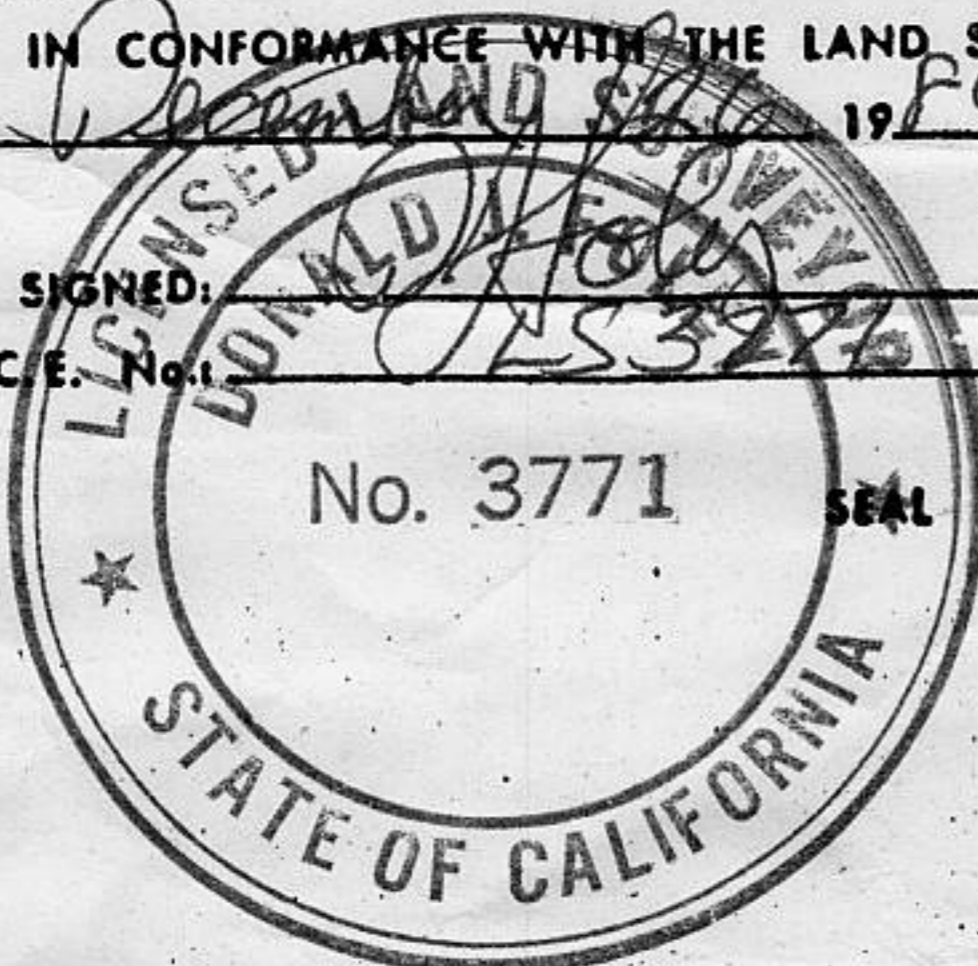
SKETCH: (Include reference tie or witness points, remarks and topo of area)



Book 1, Corner Records, Page 157
BOOK 3 CORNER RECORDS PAGE 159

SURVEYOR'S CERTIFICATE
THIS CORNER RECORD WAS PREPARED BY ME OR UNDER MY DIRECTION IN CONFORMANCE WITH THE LAND SURVEYORS ACT ON _____ 1986

SIGNED: _____
L.S. or R.C.E. No. _____



COUNTY SURVEYOR'S CERTIFICATE
THE CORNER RECORD WAS RECEIVED 1/29 1988
AND EXAMINED AND FILED 3/16 1988

BY: Don L. McDaniel
TITLE: Deputy County Surveyor

DOCUMENT No. _____

STATEMENT ON BACK OF SHEET YES NO