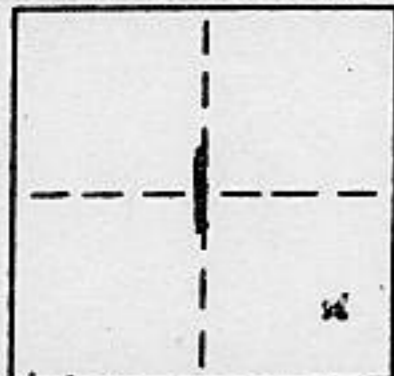


CORNER RECORD

COUNTY OF PLACER T. 13 NORTH R. 7 EAST M.D.B. & M MERIDIAN CALIFORNIA

CORNER TYPE: GOV'T. CORNER MEANDER RANCHO CONTROL OTHER
 CORNER IDENTIFICATION - DATE OF VISIT OCTOBER 8 1993

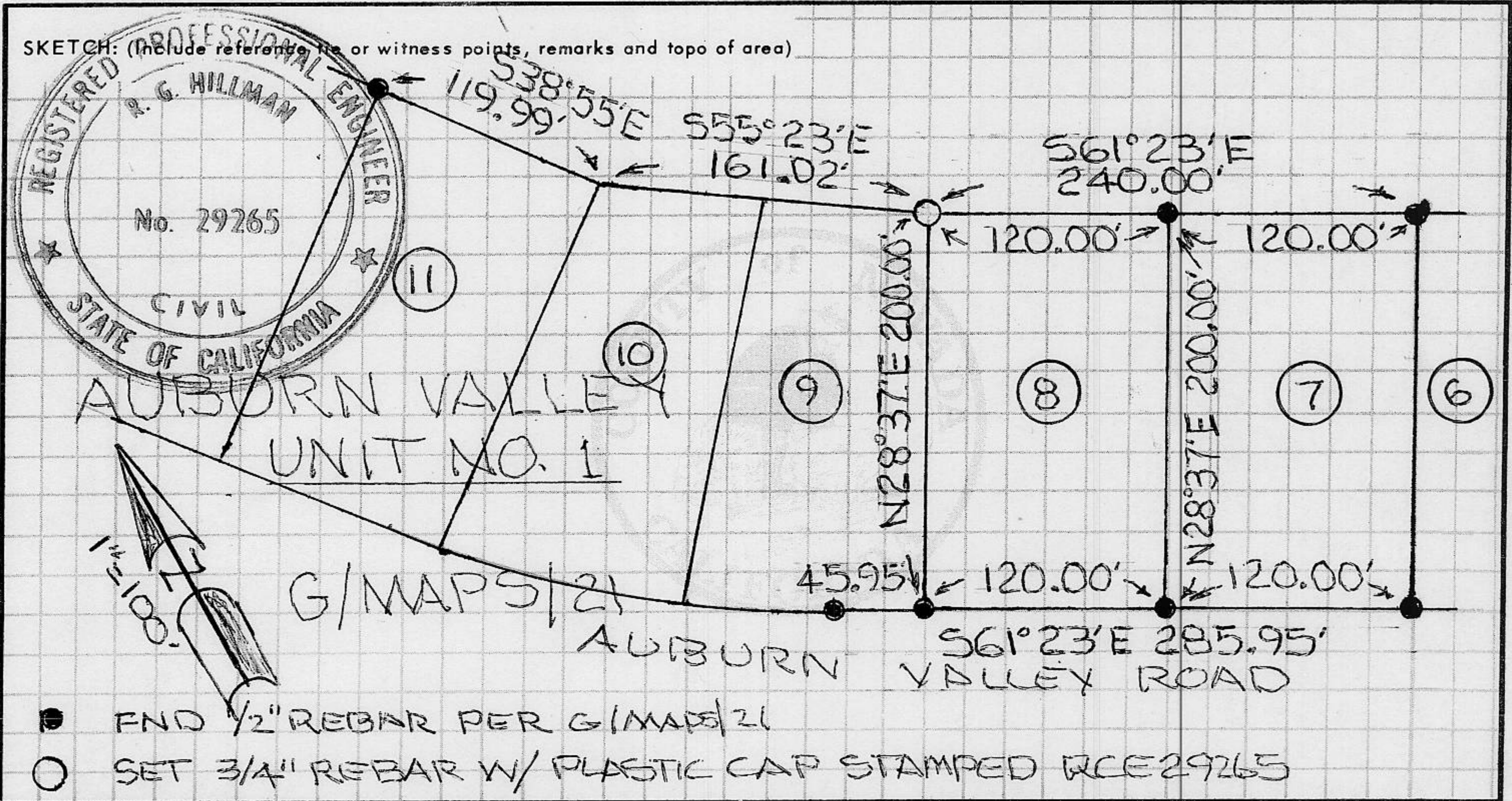


CORNER - LEFT AS FOUND FOUND AND TAGGED REESTABLISHED OBLITERATED CORNER REBUILT

PHYSICAL DESCRIPTION OF CORNER FOUND: EVIDENCE AND METHOD USED TO IDENTIFY OR REESTABLISH
END 1/2" REBAR @ POINTS SHOWN PER G/MAPS/21

PHYSICAL DESCRIPTION OF MONUMENTS REBUILT OR PERPETUATED
SET 3/4" REBAR W/ PLASTIC CAP STAMPED RCE 29265

CALIFORNIA COORDINATE SYSTEM ORDER: FIRST SECOND THIRD
 STATIONS USED: NGS (USC & GS) STATE COUNTY OTHER STATION _____ STATION _____
 ZONE _____ ELEVATION _____ NORTHINGS (Y) _____ EASTINGS (X) _____



SURVEYOR'S CERTIFICATE
 THIS CORNER RECORD WAS PREPARED BY ME OR UNDER MY DIRECTION IN CONFORMANCE WITH THE LAND SURVEYORS ACT ON OCTOBER 11 1993
 SIGNED: R.G. Hillman
 L.S. or R.C.E. No.: 29265

COUNTY SURVEYOR'S CERTIFICATE
 THIS CORNER RECORD WAS RECEIVED OCT 18 1993 AND EXAMINED AND FILED 10/18 1993
 BY: Chae Rubens
 TITLE: DEPUTY COUNTY SURVEYOR
 DOCUMENT No. _____
 STATEMENT ON BACK OF SHEET YES NO

BOOK 5 CORNER RECORDS PAGE 190