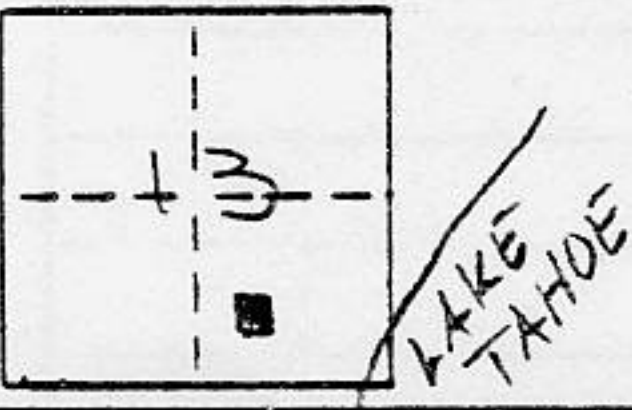


CORNER RECORD

COUNTY OF Placer T. 15N R. 16E MDB & MERIDIAN CALIFORNIA

CORNER TYPE: GOV'T. CORNER MEANDER RANCHO CONTROL OTHER

CORNER IDENTIFICATION - DATE OF VISIT 13 Sept 1991



LOT 15 LAKE TAHOE PARK SUBD. NO 1
BLOCK D D/MAPS/17

CORNER - LEFT AS FOUND FOUND AND TAGGED REESTABLISHED OBLITERATED CORNER REBUILT

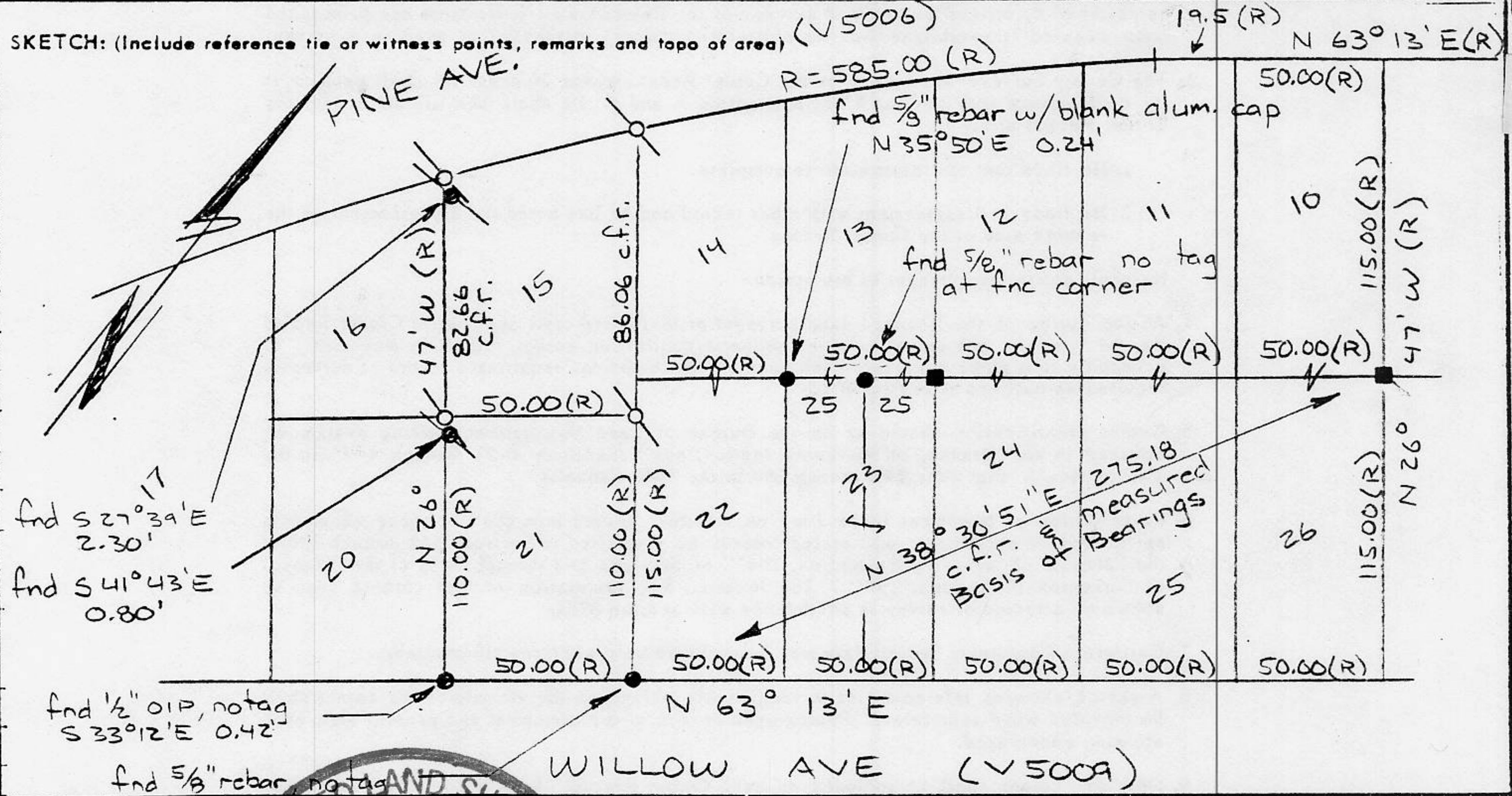
PHYSICAL DESCRIPTION OF CORNER FOUND: EVIDENCE AND METHOD USED TO IDENTIFY OR REESTABLISH

- fnd as noted
- fnd 5/8" rebar "RCE 20257" no record, not accepted.
- fnd 1/2" rebar "LS 2712"

PHYSICAL DESCRIPTION OF MONUMENTS REBUILT OR PERPETUATED

○ set 5/8" rebar "LS 6230"

CALIFORNIA COORDINATE SYSTEM ORDER: FIRST SECOND THIRD
 STATIONS USED: NGS (USC & GS) STATE COUNTY OTHER STATION _____ STATION _____
 ZONE _____ ELEVATION _____ NORTHINGS (Y) _____ EASTINGS (X) _____



SURVEYOR'S CERTIFICATE
 THIS CORNER RECORD WAS PREPARED BY ME OR UNDER MY DIRECTION IN CONFORMANCE WITH THE LAND SURVEYORS ACT ON 13 Sept 1991
 SIGNED: _____
 L.S. or R.C.E. No.: _____

COUNTY SURVEYOR'S CERTIFICATE
 THIS CORNER RECORD WAS RECEIVED _____ 19____ AND EXAMINED AND FILED R/Z 1993
 BY: Dave Rogers
 TITLE: DEPUTY COUNTY SURVEYOR
 DOCUMENT No. _____
 STATEMENT ON BACK OF SHEET

YES NO

Book 3, Corner Records, Page 132

J/A 598.00