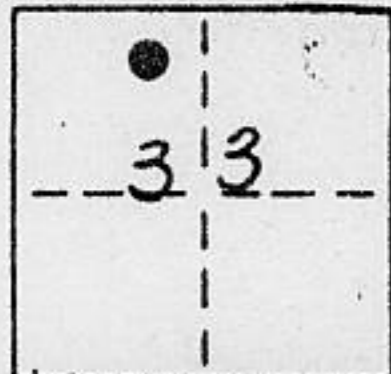


**CORNER RECORD**

COUNTY OF PLACER T. 16N. R. 17E. M.D.M. MERIDIAN CALIFORNIA

CORNER TYPE: GOV'T. CORNER  MEANDER  RANCHO  CONTROL  OTHER

CORNER IDENTIFICATION - DATE OF VISIT SEPT. 21, 1992



LOTS 277 & 278, DOLLAR POINT, UNIT NO. 5, BOOK "H" PAGE 73

CORNER - LEFT AS FOUND  FOUND AND TAGGED  REESTABLISHED OBLITERATED CORNER  REBUILT

PHYSICAL DESCRIPTION OF CORNER FOUND: EVIDENCE AND METHOD USED TO IDENTIFY OR REESTABLISH

● (FOUND) MONUMENT AS NOTED

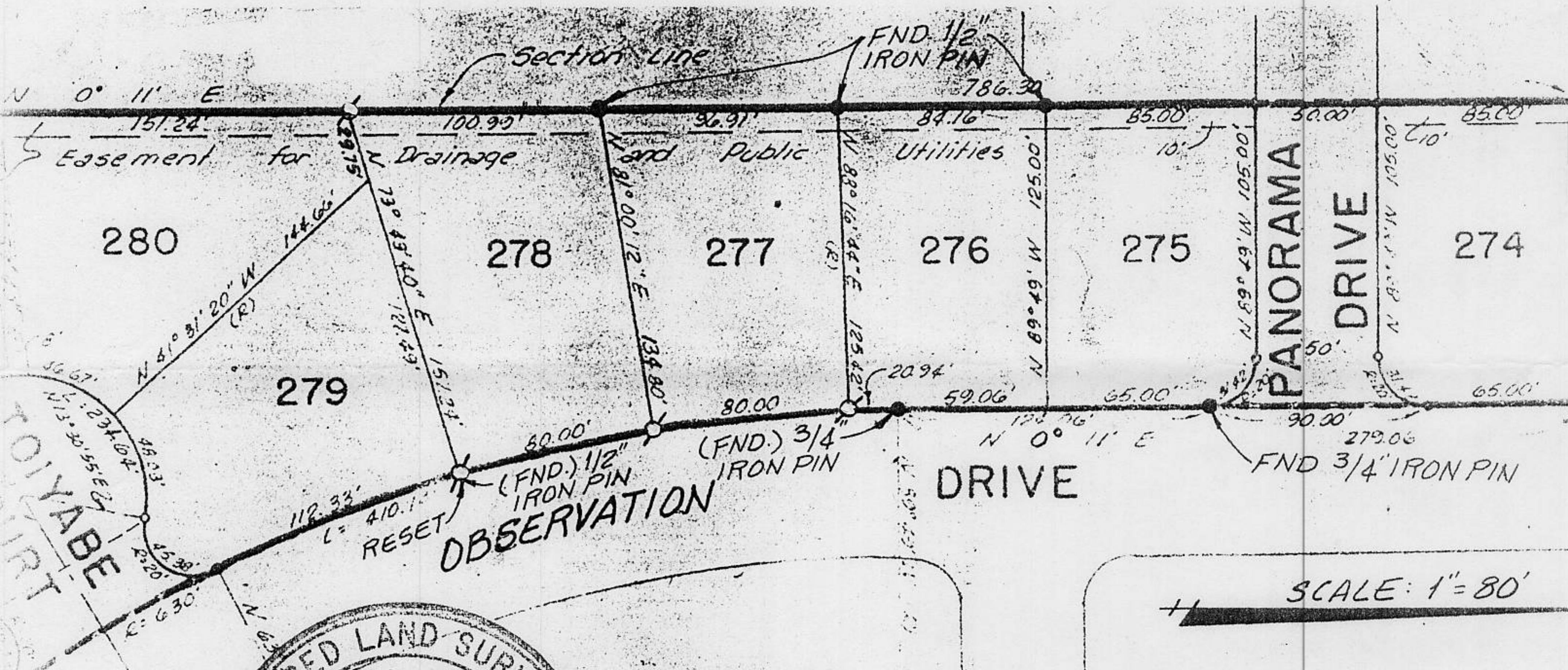
PHYSICAL DESCRIPTION OF MONUMENTS REBUILT OR PERPETUATED

⊙ (SET) 5/8" ϕ REBAR w/ 2" METAL CAP, STAMPED L.S. 5886

CALIFORNIA COORDINATE SYSTEM ORDER: FIRST  SECOND  THIRD

STATIONS USED: NGS (USC & GS)  STATE  COUNTY  OTHER  STATION \_\_\_\_\_ STATION \_\_\_\_\_

ZONE \_\_\_\_\_ ELEVATION \_\_\_\_\_ NORTHINGS (Y) \_\_\_\_\_ EASTINGS (X) \_\_\_\_\_



**SURVEYOR'S CERTIFICATE**  
 No. 5886  
 THIS CORNER RECORD WAS PREPARED BY ME OR UNDER MY DIRECTION IN CONFORMANCE WITH THE LAND SURVEYORS ACT ON \_\_\_\_\_  
 SIGNED: \_\_\_\_\_  
 L.S. or R.C.E. No.: 5886

**COUNTY SURVEYOR'S CERTIFICATE**  
 THIS CORNER RECORD WAS RECEIVED 10/19 1992  
 AND EXAMINED AND FILED 1/4 1993  
 BY: Bruce L. McDaniel  
 TITLE: DEPUTY COUNTY SURVEYOR  
 DOCUMENT No. \_\_\_\_\_  
 STATEMENT ON BACK OF SHEET

YES  NO

Book 3, Corner Records, Page 120