

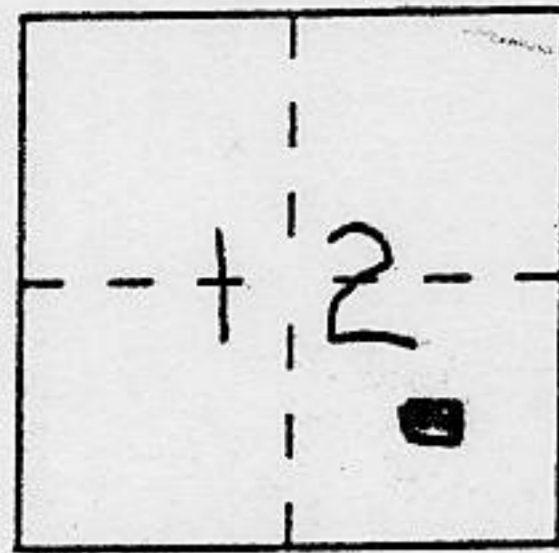
CORNER RECORD

Document Number _____

City of _____ County of PLACER, California

Brief Legal Description LOTS 45, 46, 47, & 48, ^{Book E} WOODVISTA SUBDIVISION

Book D of Maps, Page 12



T16N
R17E
MDM

CORNER TYPE

Government Corner Control
 Meander Property
 Rancho Other
 Date of Survey _____

COORDINATES (Optional)

N. _____
 E. _____
 Zone _____ Datum _____
 Elev. _____

Corner — Left as found Found and tagged Established Reestablished Rebuilt

Identification and type of corner found: Evidence used to identify or procedure used to establish or reestablish the corner:

see sketch on back

A description of the physical condition of the monument as found and as set or reset: _____

SURVEYOR'S STATEMENT

This Corner Record was prepared by me or under my direction in conformance with the Land Surveyors' Act on 30 July 1992.

Signed [Signature] L.S. or R.C.E. Number 6230

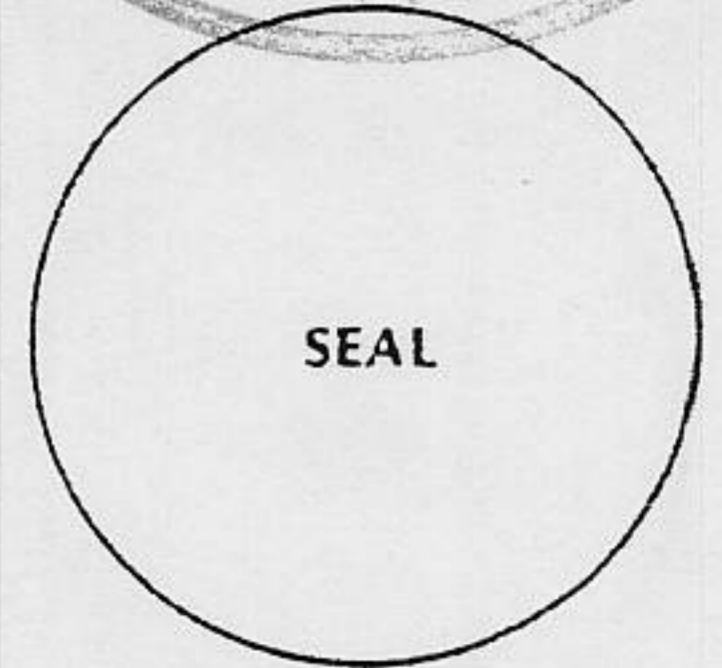
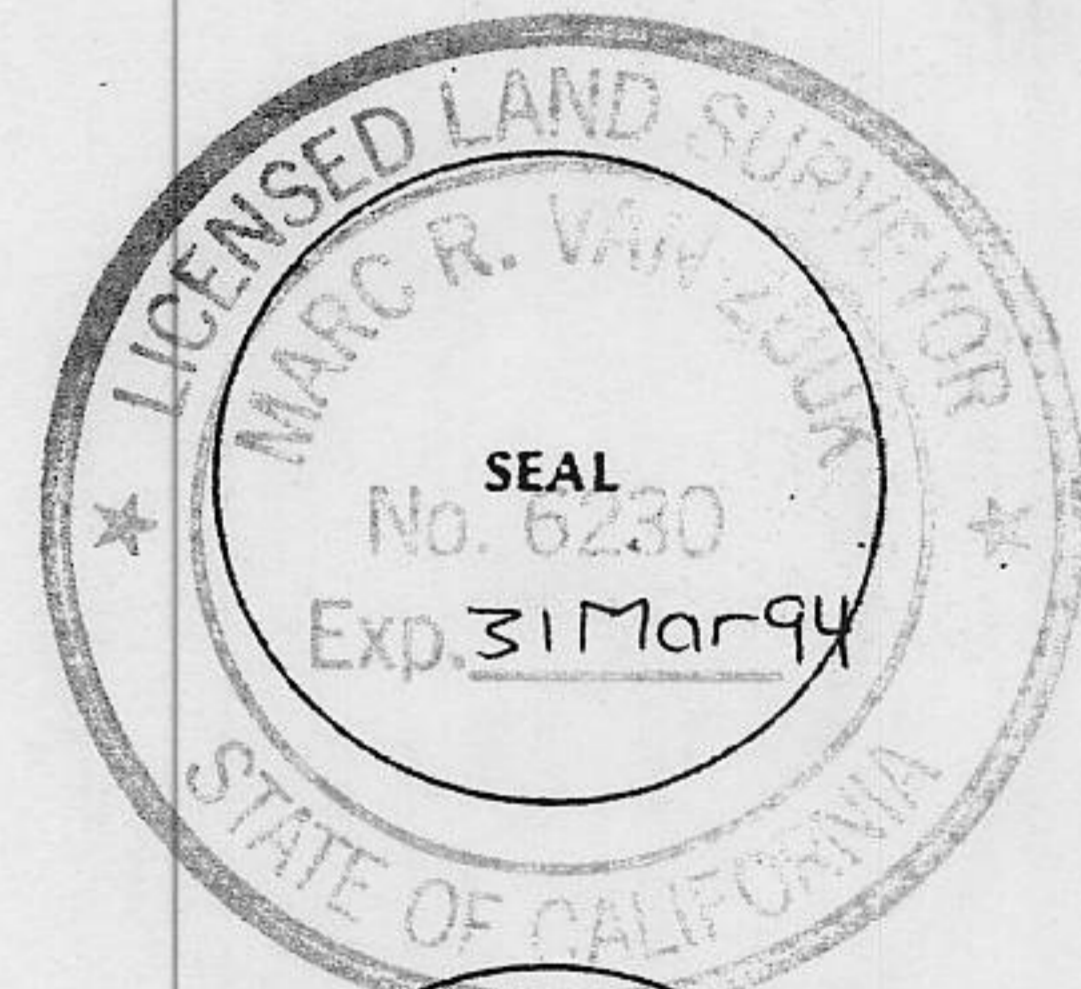
COUNTY SURVEYOR'S STATEMENT

This Corner Record was received _____ 19__ and examined

and filed December 30 1992.

Signed [Signature] Title DEPUTY COUNTY SURVEYOR

County Surveyor's Comment _____



Book 3, Corner Records, Page 113

PLAT OF SURVEY

Block E

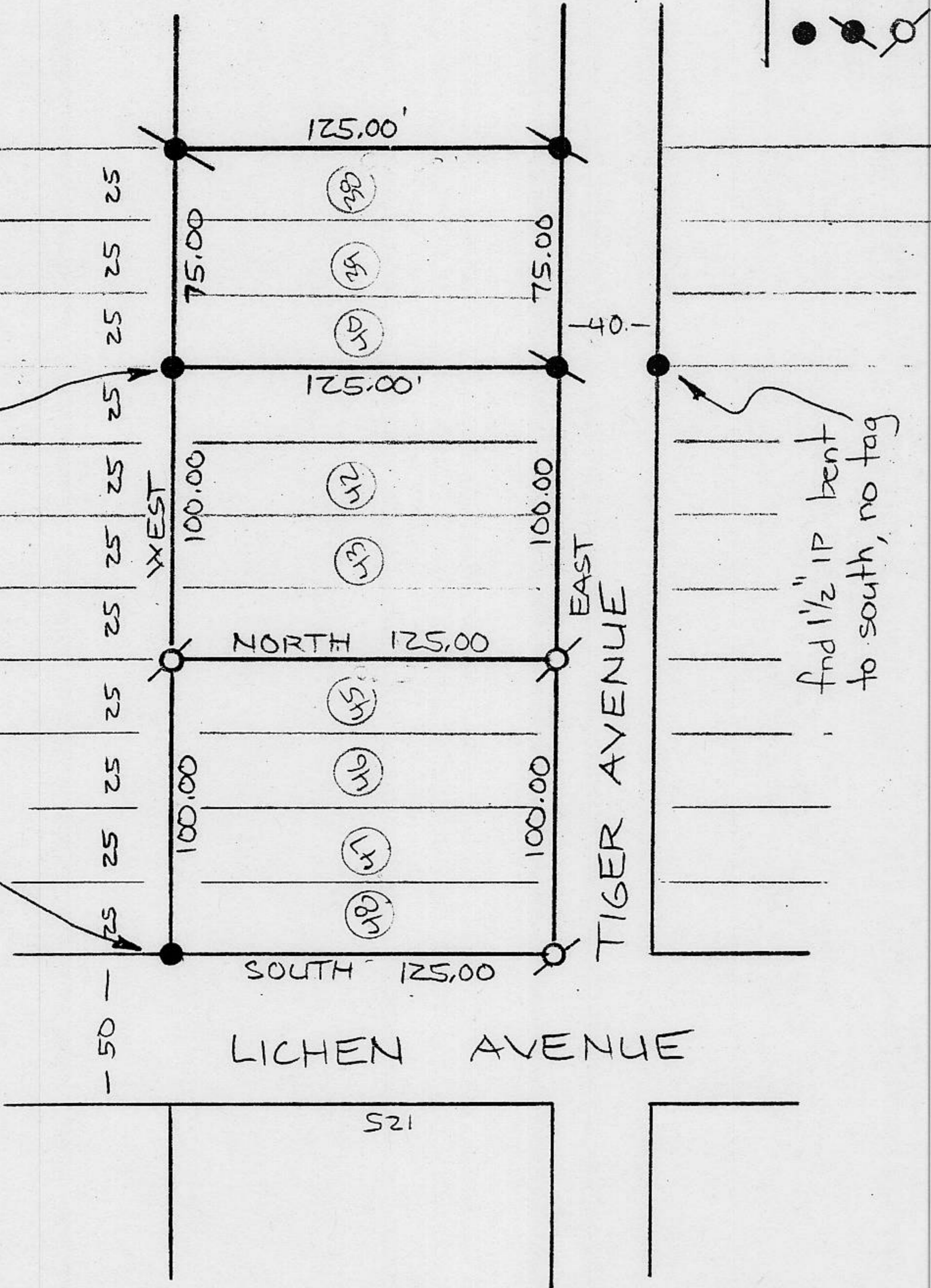
LOTS 45-48 WOODVISTA SUBDIVISION D MAPS 12

not to scale

May 1992

find 1/2" rebar - LS3422

find 1/2" rebar, no tag



LEGEND

- find as noted
- find 1 1/2" IP - LS5549
- ⊗ set 5/8" rebar - LS6230

find 1 1/2" IP bent to south, no tag

1/4 631.00 SECTION 12, T16N, R17E, MDM