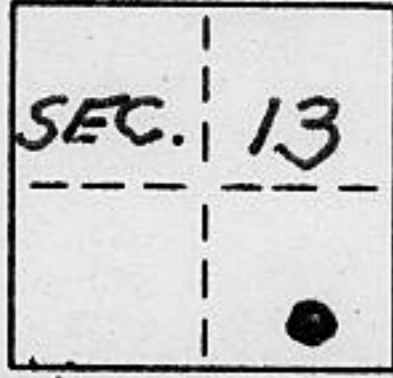


CORNER RECORD

COUNTY OF PLACER T. 15 N. R. 16 E. M.D. MERIDIAN CALIFORNIA

CORNER TYPE: GOV'T. CORNER MEANDER RANCHO CONTROL OTHER

CORNER IDENTIFICATION - DATE OF VISIT 5-30 1989



LOT 7, BLOCK "L" LAKE TAHOE PARK SUB. NO. 1
BOOK "D" OF MAPS PAGE 17

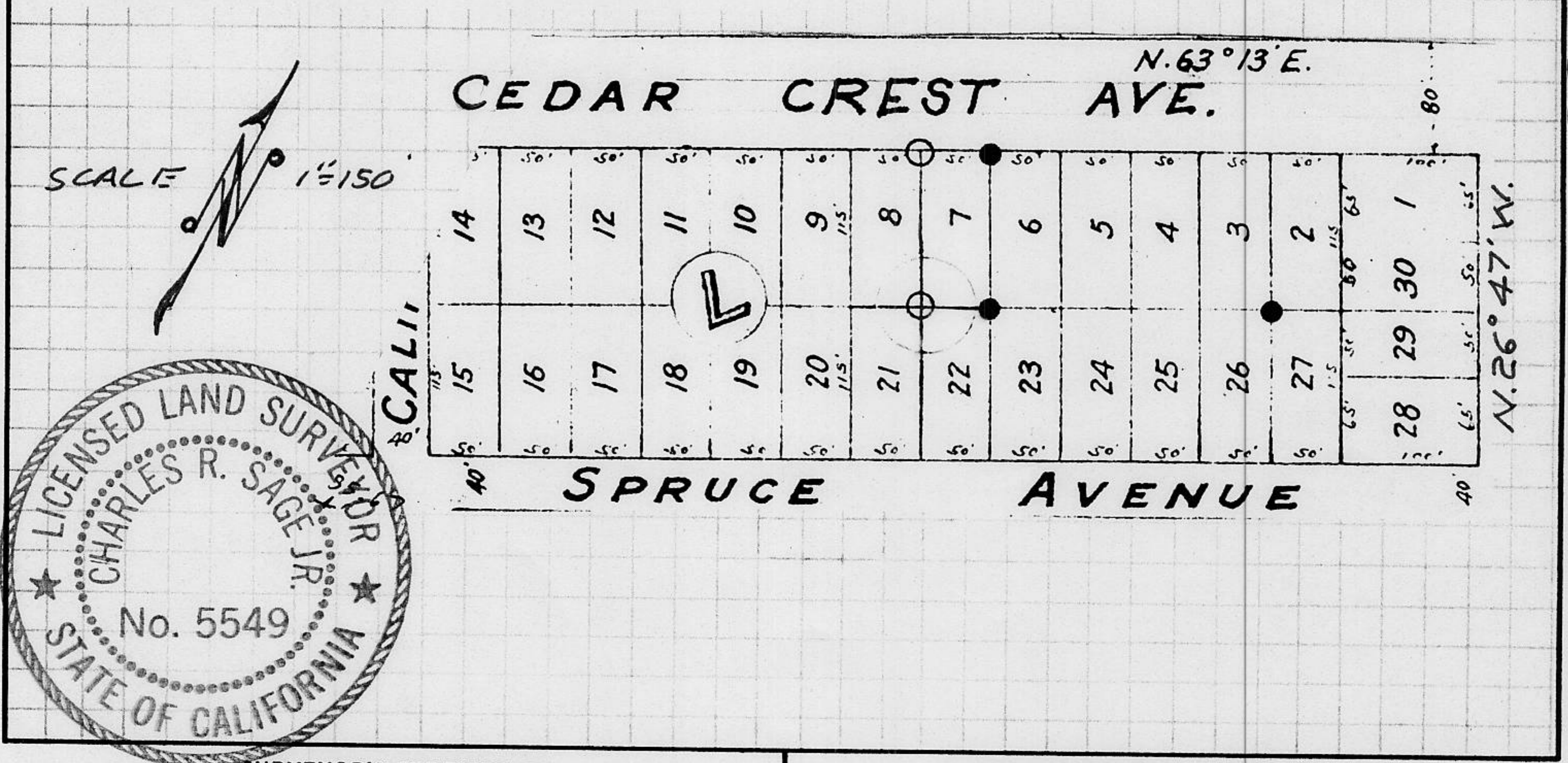
CORNER - LEFT AS FOUND FOUND AND TAGGED REESTABLISHED OBLITERATED CORNER REBUILT

PHYSICAL DESCRIPTION OF CORNER FOUND: EVIDENCE AND METHOD USED TO IDENTIFY OR REESTABLISH
● = FOUND 5/8" REBAR w/PLASTIC CAP STAMPED L.S. 4154

PHYSICAL DESCRIPTION OF MONUMENTS REBUILT OR PERPETUATED
○ = SET 3/4" IRON PIPE w/PLASTIC PLUG STAMPED L.S. 5549

CALIFORNIA COORDINATE SYSTEM ORDER: FIRST SECOND THIRD
STATIONS USED: NGS (USC & GS) STATE COUNTY OTHER STATION _____ STATION _____
ZONE _____ ELEVATION _____ NORTHINGS (Y) _____ EASTINGS (X) _____

SKETCH: (Include reference tie or witness points, remarks and topo of area)



SURVEYOR'S CERTIFICATE

THIS CORNER RECORD WAS PREPARED BY ME OR UNDER MY DIRECTION IN CONFORMANCE WITH THE LAND SURVEYORS ACT ON JUNE 6 1989

SIGNED: Charles R. Sage, Jr.

L.S. or R.C.E. No.: L.S. 5549 EXP. 6-30-89
SEAL

COUNTY SURVEYOR'S CERTIFICATE

THIS CORNER RECORD WAS RECEIVED 12/15 1991
AND EXAMINED AND FILED 6/8 1992

BY: Brian L. McDonald
TITLE: DEPUTY COUNTY SURVEYOR

DOCUMENT No. _____
STATEMENT ON BACK OF SHEET

YES NO

JN: 8964

Book 3, Corner Records, Page 53