

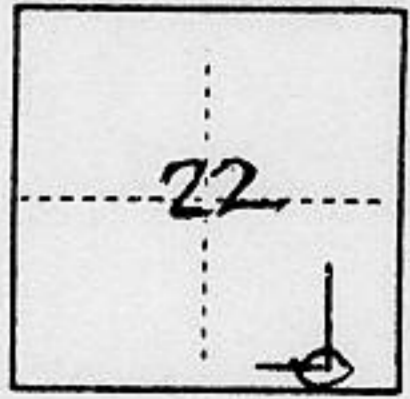
(For County Use Only)

CORNER RECORD

COUNTY OF PLACER T. 15N R. 11E MDM MERIDIAN CALIFORNIA

CORNER TYPE: GOV'T. CORNER MEANDER RANCHO CONTROL OTHER

CORNER IDENTIFICATION — DATE OF VISIT 10/2/92 1992



COR 11 of MS 1397 Mountain Gate P.M.

CORNER — LEFT AS FOUND FOUND AND TAGGED REESTABLISHED OBLITERATED CORNER REBUILT

PHYSICAL DESCRIPTION OF CORNER FOUND; EVIDENCE AND METHOD USED TO IDENTIFY OR REESTABLISH

COR 11
MGPM
LS3062
1974

Found 3/4" Brass Capped pipe per ROS 5/102

A FIR STUMPHOLE BEARS N88°E - 55' (ORIG. BT)

PHYSICAL DESCRIPTION OF MONUMENTS REBUILT OR PERPETUATED

Set R.M., a 2" Aluminum Pipe @ S89°01'34"W - 10'

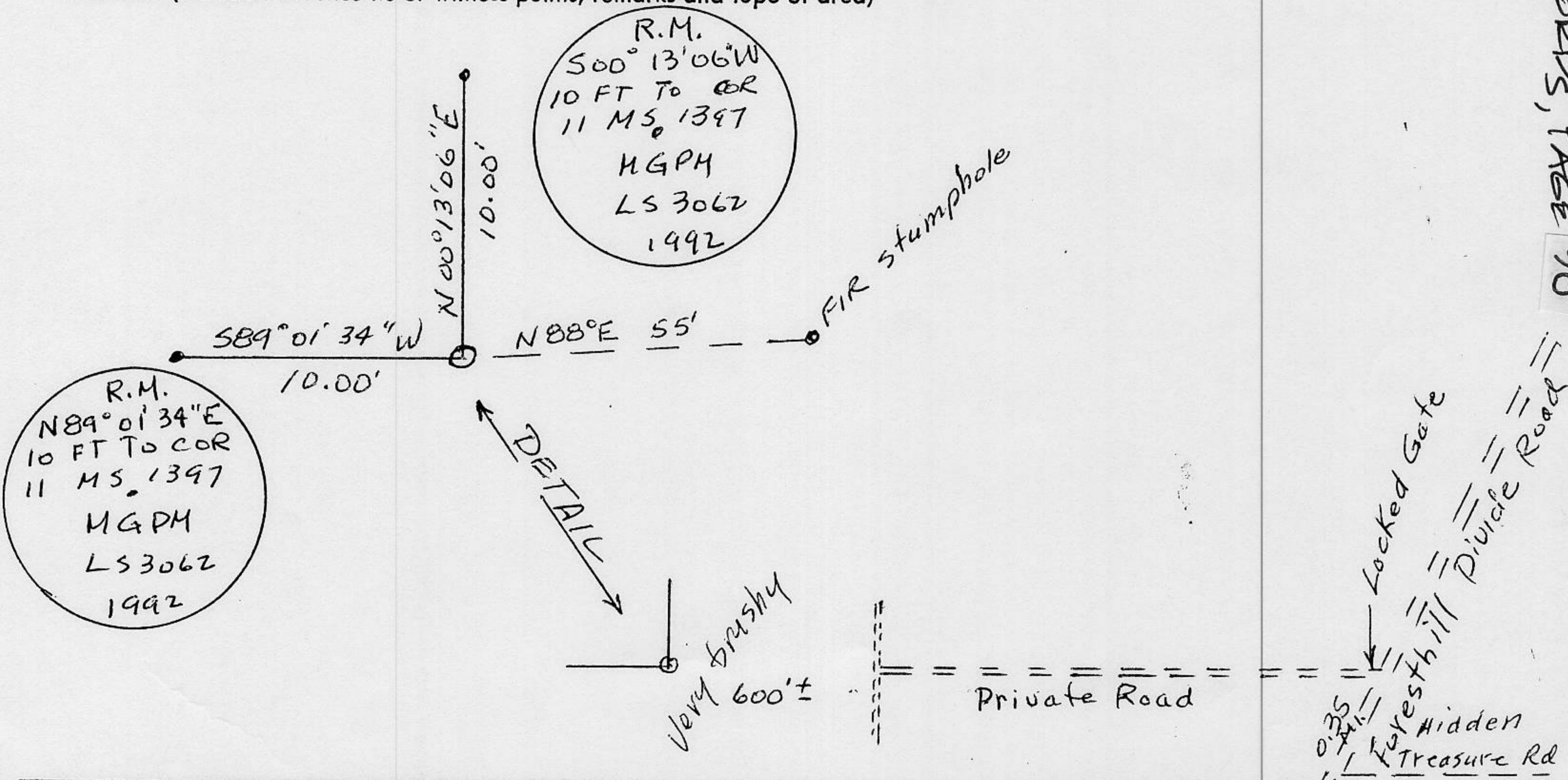
set R.M., a 2" Aluminum pipe @ N00°13'06"E - 10'

CALIFORNIA COORDINATE SYSTEM ORDER: FIRST SECOND THIRD
STATIONS USED: NGS (USC & GS) STATE COUNTY OTHER STATION _____ STATION _____
ZONE _____ ELEVATION _____ NORTHINGS (Y) _____ EASTINGS (X) _____

(Fold)

SEE CONTROL DIAGRAM ON FILE WITH USFS, NEVADA CITY,
DAMASCUS CADASTRAL SURVEY - CONTRACT NO. 53-9A63-2-IT 56

SKETCH: (Include reference tie or witness points, remarks and topo of area)



Book 3, Corner Records, Page 98

SURVEYOR'S CERTIFICATE

THIS CORNER RECORD WAS PREPARED BY ME OR UNDER MY DIRECTION IN CONFORMANCE WITH THE LAND SURVEYORS ACT

SIGNED: [Signature] 10/15/92 1992
L.S. NO. 3062 or R.C.E. No. EX
6/30/96

SEAL

COUNTY SURVEYOR'S CERTIFICATE

THE CORNER RECORD WAS RECEIVED _____ 19_____
AND EXAMINED AND FILED 12/16 1992

BY: David L. McDaniel
TITLE: DEPUTY COUNTY SURVEYOR

DOCUMENT No. _____

STATEMENT ON BACK OF SHEET

YES NO

