

CORNER RECORD

COUNTY OF PLACER T. 14N. R. 17E. M.D. MERIDIAN CALIFORNIA

CORNER TYPE: GOV'T. CORNER MEANDER RANCHO CONTROL OTHER

CORNER IDENTIFICATION - DATE OF VISIT 9-19 1989



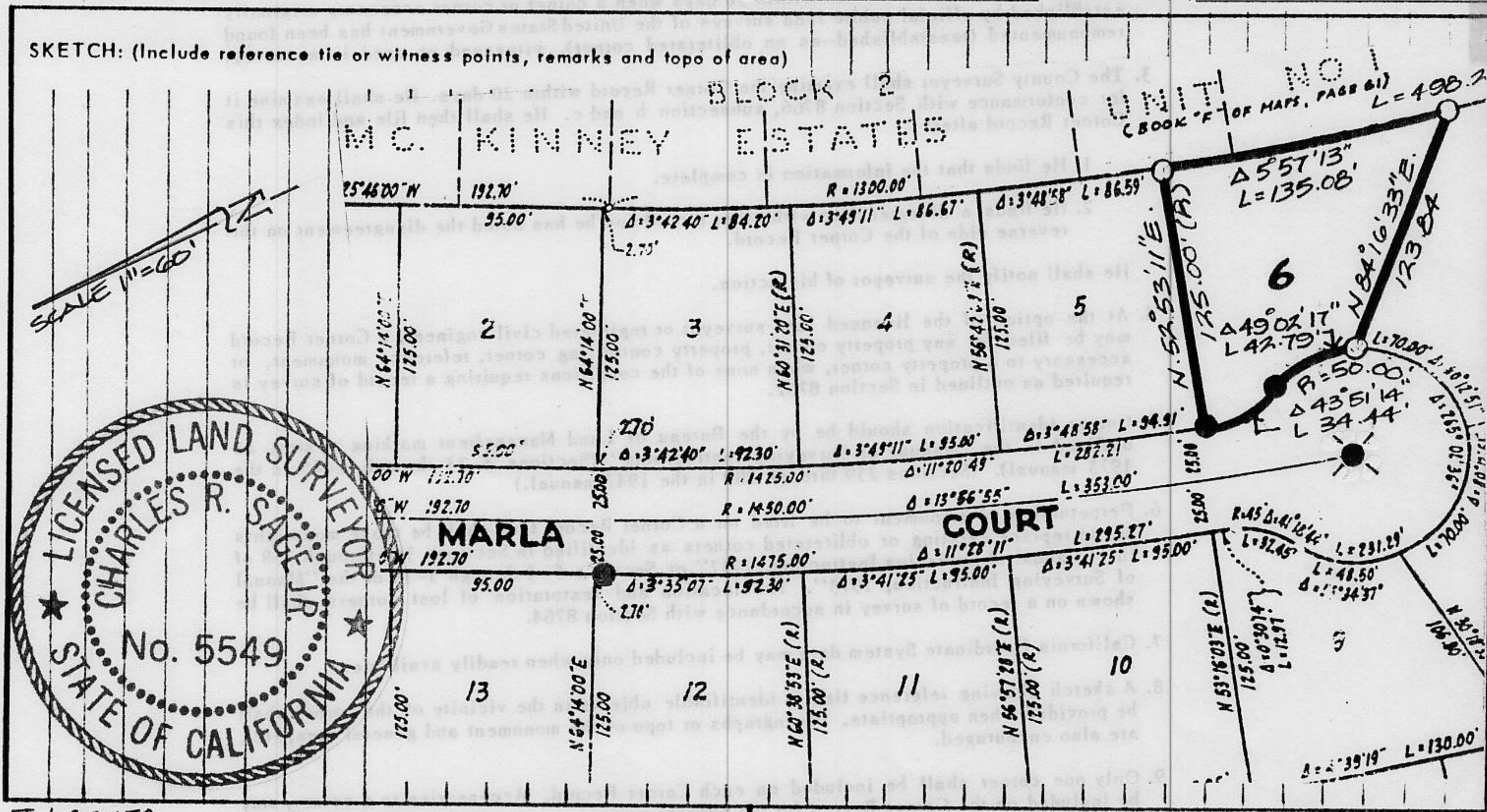
LOT 6 MCKINNEY ESTATES UNIT NO. 11
BK "H" OF MAPS PAGE 74

CORNER - LEFT AS FOUND FOUND AND TAGGED REESTABLISHED OBLITERATED CORNER REBUILT

PHYSICAL DESCRIPTION OF CORNER FOUND: EVIDENCE AND METHOD USED TO IDENTIFY OR REESTABLISH
 ● FOUND 2" IRON PIPE W/ WOOD PLUG + TAG STAMPED B.C.E 15290
 ● FOUND 2 1/2" BRASS DISC. SET IN CONC. STAMPED B.C.E 15290

PHYSICAL DESCRIPTION OF MONUMENTS REBUILT OR PERPETUATED:
 ○ SET 3/4" IRON PIPE W/ PLASTIC PLUG STAMPED L.S. 5549

CALIFORNIA COORDINATE SYSTEM ORDER: FIRST SECOND THIRD
 STATIONS USED: NGS (USC & GS) STATE COUNTY OTHER STATION _____ STATION _____
 ZONE _____ ELEVATION _____ NORTHINGS (Y) _____ EASTINGS (X) _____



SURVEYOR'S CERTIFICATE
 THIS CORNER RECORD WAS PREPARED BY ME OR UNDER MY DIRECTION IN CONFORMANCE WITH THE LAND SURVEYORS ACT ON 9-25 1989
 SIGNED: Charles R. Sage, Jr.
 L.S. or R.C.E. No.: L.S. 5549 EXP. 6-30-93
 SEAL

COUNTY SURVEYOR'S CERTIFICATE
 THIS CORNER RECORD WAS RECEIVED _____ 19____
 AND EXAMINED AND FILED _____ 19____
 BY: _____
 TITLE: _____
 DOCUMENT No. _____
 STATEMENT ON BACK OF SHEET YES NO