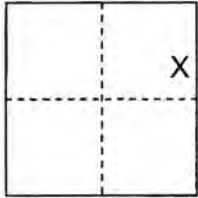


# CORNER RECORD

# COUNTY OF PLACER, CALIFORNIA

City of North Auburn Document Number 2015-0108

Brief Legal Description Lot "6", Tract Map No. 171, I/Maps/76 P.C.R.



**S.**

SEC 29

**T.**

T.13N

**R.**

R. 8E

**R.**

M.D.M.

## CORNER TYPE

Government Corner   
Meander   
Rancho   
Date of Survey 07-13-2015

Control   
Property   
Other

## COORDINATES

(Optional)

N. \_\_\_\_\_  
E. \_\_\_\_\_  
Zone \_\_\_\_\_ Datum \_\_\_\_\_  
Elev. \_\_\_\_\_

Corner--- Left as found  Found and tagged  Established  Reestablished  Rebuilt

Identification and type of corner found: Evidence used to identify or procedure used to establish or reestablish corner: USED THE RECORD DIMENSIONS AND FOUND MONUMENTS PER I/MAPS/76 P.C.R. TO REESTABLISH MISSING CORNERS ON THE NORTHERN LINE OF "LOT 6" AS SHOWN ON ACCOMPANYING PLAT.

A description of the physical condition of the monument as found and as set or reset: RESET NORTHWEST PROPERTY CORNER OF LOT SIX (PER I/MAPS/76) WITH CARRIAGE BOLT IN ROLLED CURB WITH CENTER PUNCH AND WASHER STAMPED LS 5907, RESET NORTHEAST CORNER OF LOT SIX (PER I/MAPS/76) WITH 3/4" REBAR (EAST OF FRONTAGE ROAD 0.5 +/- FEET) WITH PLASTIC CAP STAMPED LS 5907.

## SURVEYOR'S STATEMENT

This Corner Record was prepared by me or under my direction in conformance with the Professional Land Surveyors' Act on APRIL 7 2016.

Signed Edward M. Giurlani  
L.S. or R.C.E. Number 5907 Expiration Date 12/31/16



## COUNTY SURVEYOR'S STATEMENT

This Corner Record was received \_\_\_\_\_ 20\_\_\_\_ and examined and filed April 25, 2016 20\_\_\_\_.

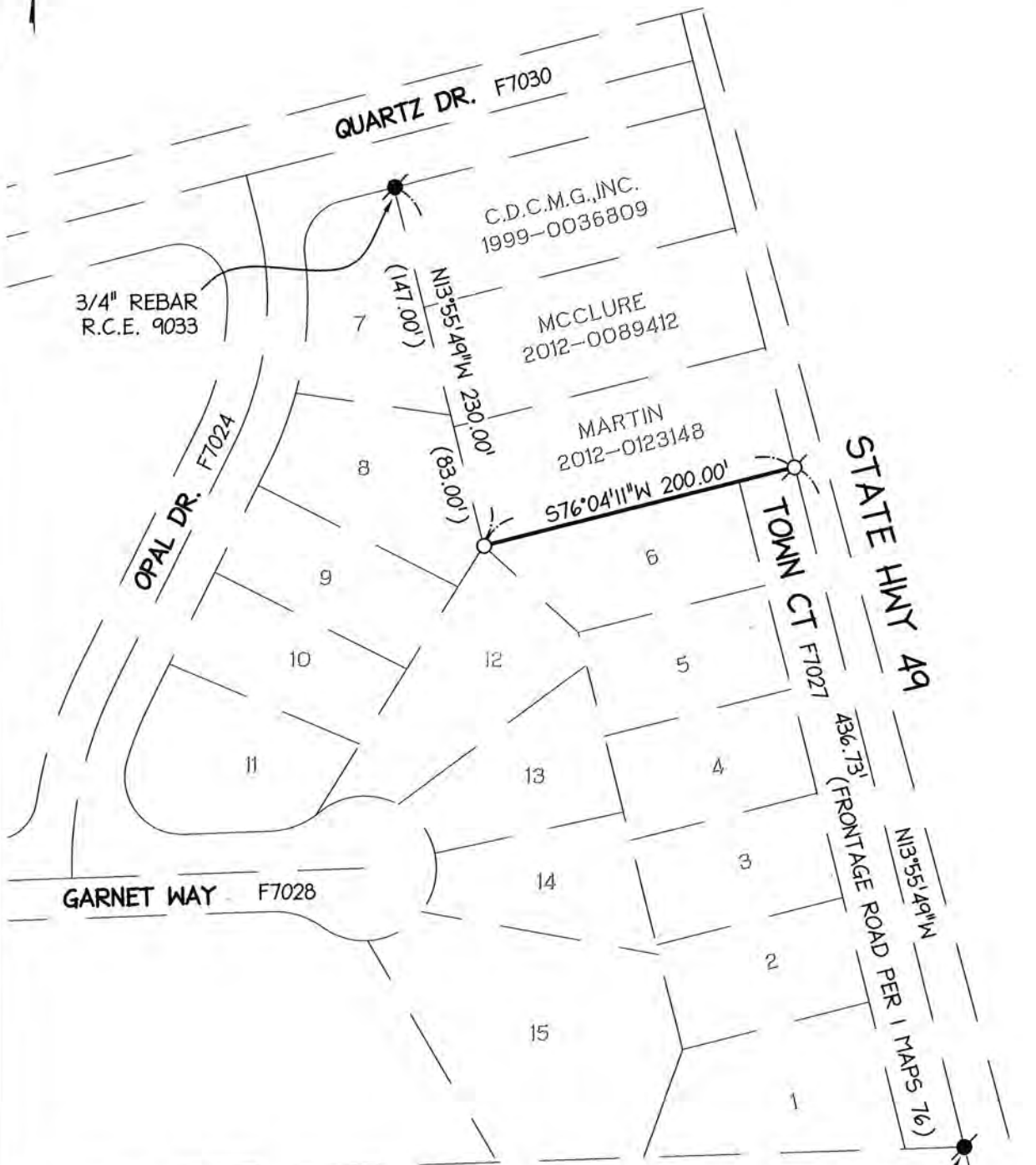
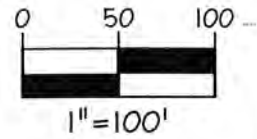
Signed Leslie Amberry Title County Surveyor  
L.S. or R.C.E. Number 6584 Expiration Date 12-31-17



**County Surveyor's Comment** THE FILING OF THIS CORNER RECORD DOES NOT CONSTITUTE AGREEMENT WITH THE LOCATION SHOWN, OR RELINQUISHMENT OF ANY PORTION OF THE RIGHT-OF-WAY FOR TOWN CT. (FORMERLY FRONTAGE RD) AS DEDICATED ON THE MAP ENTITLED "AUBURN GREENS UNIT NO. 1" FILED IN BOOK I OF MAPS AT PAGE 76 PLACER COUNTY OFFICIAL RECORDS

BOOK 18 CORNER RECORDS PAGE 95

PLAT OF SURVEY  
 NORTH LINE LOT "6," TRACT MAP NO. 171,  
 I/MAPS/76, P.C.R., CALIFORNIA, A PORTION OF THE  
 E 1/2 OF SEC. 29, T.13 N., R.8E., M.D.M.



3/4" REBAR  
 R.C.E. 9033

C.D.C.M.G., INC.  
 1999-0036809

MCCLURE  
 2012-0089412

MARTIN  
 2012-0123148

STATE HWY 49  
 TOWN CT F7027

436.73'  
 (FRONTAGE ROAD PER I MAPS 76)  
 N13°55'49"W

FOUND  
 1/2" IRON PIN  
 IN CONCRETE

FOUND CONC.  
 HIGHWAY  
 MONUMENT

**LEGEND & NOTES:**

ALL BEARINGS AND DISTANCES SHOWN HEREON ARE RECORD PER I MAPS 76.

- FOUND MONUMENT AS DESCRIBED PER I MAPS 76
- SET 3/4" REBAR TAGGED LS 5907
- SET CARRIAGE BOLT IN ROLLED CURB WITH WASHER STAMPED LS 5907
- ( ) RECORD DISTANCE PER I MAPS 76

BOOK 18 CORNER RECORDS, PAGE 95