

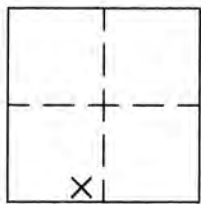
CORNER RECORD

COUNTY OF PLACER, CALIFORNIA

City of

Document Number 20150095

Brief Legal Description: 96-0040401, ORPC, AS SHOWN ON 14 ROS 157, PCR



Sec. 8
T. 13 N.
R. 9 E.

CORNER TYPE

Government Corner Control
Meander Property
Rancho Other
Date of Survey: 10/12/2015

COORDINATES
(Optional)

N.
E.
Zone Datum
Elev.

Corner — Left as found Found and tagged Established Reestablished Rebuilt

Identification and type of corner found: Evidence used to identify or procedure used to establish or reestablish corner:

REESTABLISHED CORNERS FROM FOUND HIGHWAY MONUMENTS 19-270, 19-271 AND A 1/2" IRON PIPE AS SHOWN ON THAT CERTAIN RECORD OF SURVEY FILED IN BOOK 14 OF SURVEYS, AT PAGE 157, PLACER COUNTY RECORDS.

A description of the physical condition of the monument as found and as set or reset:

SET 3/4" IRON PIN WITH 2-1/2" ALUMINUM CAP STAMPED "PCWA LS4751"

SURVEYOR'S STATEMENT

This Corner Record was prepared by me or under my direction in conformance with the Land

Surveyor's Act on APRIL 4, 2016.

Signed [Signature]

L.S. or R.C.E. Number 4751 Expiration Date 9/31/17



COUNTY SURVEYOR'S STATEMENT

This Corner Record was received _____ 20____ and examined

and filed APRIL 24 2016 20____.

Signed [Signature] Title County Surveyor

L.S. or R.C.E. Number 6584 Expiration Date 12-31-17



County Surveyor's Comment _____

BOOK 18 CORNER RECORD PAGE 93

LEGEND

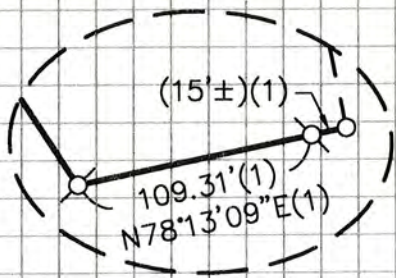
- (1) . . RECORD PER 14 R.O.S. 157 PCR
- . . FOUND MONUMENT AS NOTED
- . . SET 3/4" IRON PIN WITH 2-1/2" ALUMINUM CAP STAMPED "PCWA LS4751"

***NOTE**

BEARING SHOWN AS N24°19'41"W
ON 14 ROS 157 IS IN ERROR.
BEARING SHOWN HEREON CORRECTLY
AS S24°19'41"W.

FOUND 2-3/16" BRASS DISK
STAMPED "CALIFORNIA DIVISION OF
HIGHWAYS STA. 19-271"(1)

FOUND 2-3/16" BRASS DISK
STAMPED "CALIFORNIA DIVISION OF
HIGHWAYS STA. 19-270"(1)



DETAIL
NTS

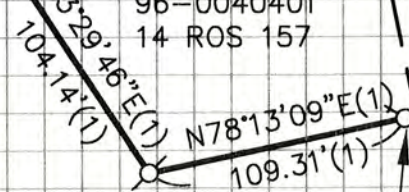


APPLEGATE ROAD
(CO. RD. G1012)

BON VUE ROAD
(CO. RD. G1021)

FOUND 1/2" IRON PIPE
TAGGED "P.C.W.A."(1)

PCWA
96-0040401
14 ROS 157



SEE DETAIL

CORNER RECORD
PCWA
APPLEGATE WTP
A PORTION OF
SECTION 8, T.13 N., R.9 E., M.D.M.
PLACER COUNTY, CALIFORNIA
SCALE: 1"=80' APRIL 4, 2016

ANDREGG
GEOMATICS
www.andregg.com
800-400-7072