

CORNER RECORD

Document Number

20150050

City of _____

County of

PLACER

California

Brief Legal Description LOTS 224 & 227, CHAMBERLANDS UNIT F SUBDIVISION, H/MAPS/28 O.R.P.C.

7	
x	

SEC. 7
T. 14 N.
R. 17 E.
M.D.B. & M.

CORNER TYPE

Government Corner Control
Meander Property
Rancho Other
Date of Survey 4/16/2015

COORDINATES (OPTIONAL)

N. _____
 E. _____
 Zone _____ Datum _____
 Elev. _____
Vert. Datum: NGVD29 NAVD88
Meas. Units: Metric Imperial

CORNER- Left as Found Found and Tagged Established Reestablished Rebuilt

Identification and type of corner found: Evidence used to identify or procedure used to establish or reestablish the corner:

REPLACED DESTROYED MONUMENTS AFTER WATER LINE CONSTRUCTION TO THEIR PREVIOUS LOCATION, TIED FROM THE PRE-CONSTRUCTION SURVEY.

A description of the physical condition of the monument as found and as set or reset:

- SET $\frac{5}{8}$ " REBAR WITH YELLOW PLASTIC CAP LS-7429 AS SHOWN ON PLAT
 FOUND MONUMENT AS SHOWN ON PLAT
 DIMENSION POINT (NOTHING FOUND OR SET)

SURVEYOR'S STATEMENT

This Corner Record was prepared by me or under my direction in conformance with the

Land Surveyors Act on

Feb. 252016

Signed

P.L.S. or R.C.E. No.

7429

COUNTY SURVEYOR'S STATEMENT

This Corner Record was received _____

and examined and filed

April 25, 2016

Signed

P.L.S. or R.C.E. No.

6584

Title

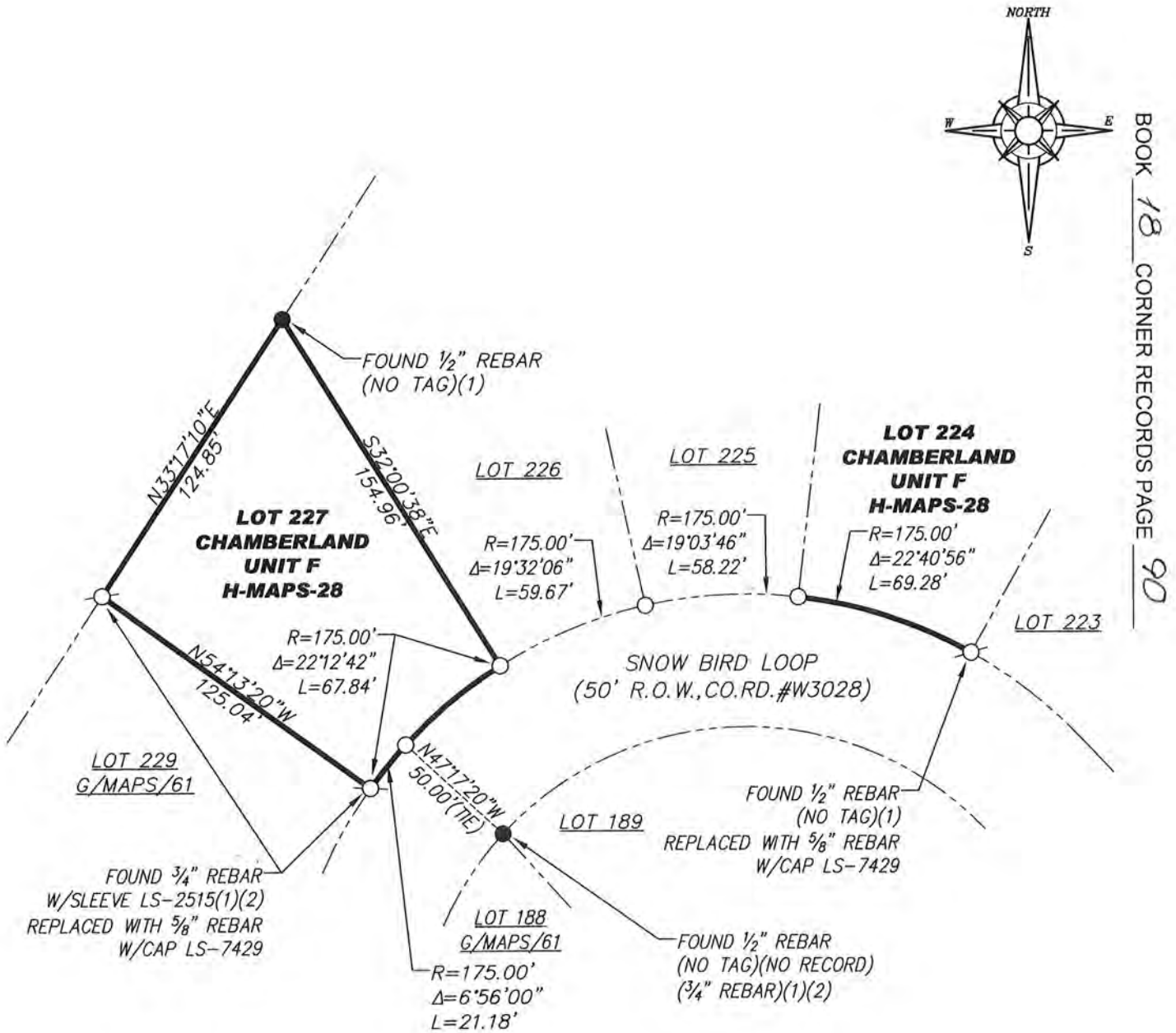
County Surveyor

COUNTY SURVEYOR'S COMMENT:

PLAT OF SURVEY

LOTS 224 & 227, CHAMBERLANDS UNIT F SUBDIVISION, AS FILED IN BOOK H OF MAPS AT PAGE 28, OFFICIAL RECORDS PLACER COUNTY, CALIFORNIA. A PORTION OF SECTION 7, TOWNSHIP 14 N., RANGE 17 E., M.D.B. & M.

SCALE 1" = 60' DATE OF SURVEY 4/16/2015



BOOK 18 CORNER RECORDS PAGE 90

ALL BEARINGS AND DISTANCES AS SHOWN HEREON ARE RECORD PER H MAPS 28 O.R.P.C

- FOUND MONUMENT AS SHOWN ON PLAT
- SET 5/8" REBAR WITH YELLOW PLASTIC CAP L.S. 7429
- DIMENSION POINT (NOTHING FOUND OR SET)
- (1) PER H/MAPS/28
- (2) PER G/MAPS/61

J/N 1648.17