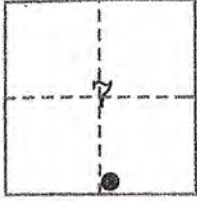


CORNER RECORD

COUNTY OF PLACER, CALIFORNIA

City of _____ Document Number 20150105

Brief Legal Description LOTS 1 & 2, BLOCK 10, D MAPS 52, 16 ROS 132



T.14N.,R.17E.
M.D.B.& M.

CORNER TYPE

COORDINATES
(Optional)

Government Corner Control N. _____
Meander Property E. _____
Rancho Other Zone _____ Datum _____
Date of Survey NOVEMBER 2015 Elev. _____

Corner- Left as found Found and tagged Established Reestablished Rebuilt

Identification and type of corner found: Evidence used to identify or procedure used to establish or reestablish corner:

~ FOUND 5/8" REBAR L.S. 3422 PER 16 ROS 132. USED RECORD
MONUMENTS AND RECORD DIMENSIONS TO RESET MISSING CORNER.

A description of the physical condition of the monument as found and as set or reset:

SET P.K. NAIL WITH 1 1/4" BRASS TAG L.S. 5886
COUNTERSUNK IN A.C.PAVING.

SURVEYOR'S STATEMENT

This corner record was prepared by me or under my direction in conformance with the Professional Land Surveyor's Act on OCTOBER 2015

Signed Thomas C. Buswell L.S. or R.C.E. Number 5886
THOMAS C. BUSWELL



COUNTY SURVEYOR'S STATEMENT

This Corner Record was Received _____ 20 _____ and Examined

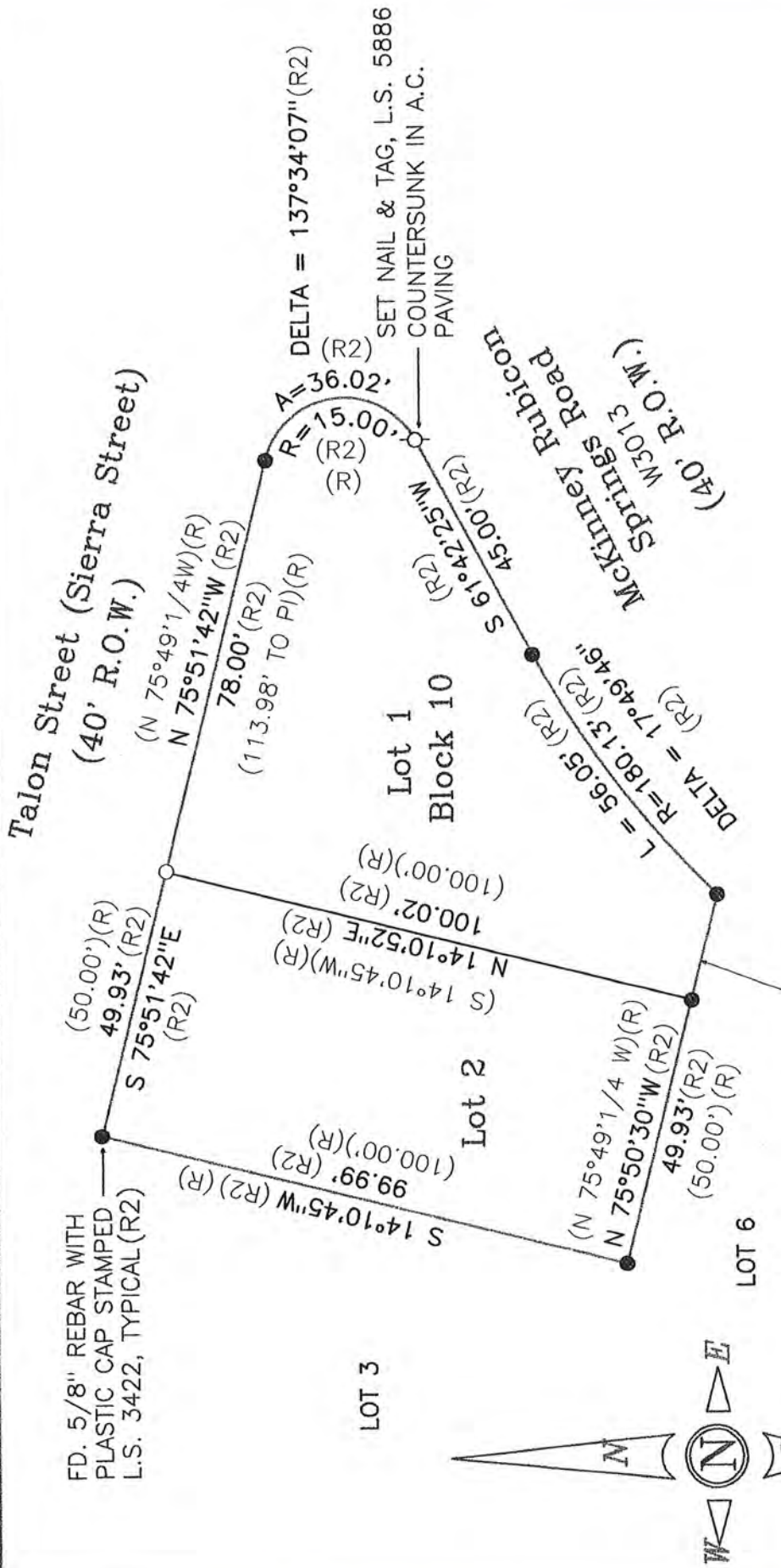
and filed MARCH 8 2016

Signed Leslie Amberry Title County Surveyor



County Surveyor's Comment _____

BOOK 18 OF CORNER RECORDS, PAGE 85



- ~ FD. 5/8" REBAR WITH YELLOW PLASTIC CAP L.S. 3422(R2)
 - ~ DIMENSION POINT ONLY, NOTHING FOUND OR SET
 - σ ~ SET P.K. NAIL WITH 1 1/4" BRASS TAG STAMPED L.S. 5886, COUNTERSUNK IN A.C. PAVING
- (R) ~ RECORD PER D MAPS 52
 (R2) ~ RECORD PER 16 ROS 132