

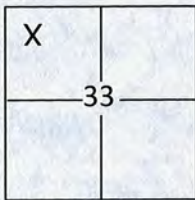
CORNER RECORD

Document Number 20150104

City of unincorporated area

County of Placer, California

Brief Legal Description WESTERLY RIGHT OF WAY LINE OF STATE HIGHWAY ROUTE 49 22/RS/47 & 35/PM/89 PCR



T.13 N.
R.8 E.

CORNER TYPE

Government Corner Control
 Meander Property
 Rancho Other

Date of Survey DECEMBER 3, 2015

COORDINATES(Optional)

N. _____
 E. _____
 Zone _____ NAD27 NAD83
 NAD83 Epoch _____
 Elev. _____
 Vert. Datum: NGVD29 NADV88
 Meas. Units: Metric Imperial

Corner - Left as found Found and tagged Established Reestablished Rebuilt

Identification and type of corner found: Evidence used to identify or procedure used to establish or reestablish the corner:
FOUND 1" IRON PIPE WITH ALUMINUM CAP STAMPED "CALTRANS RW" AS SHOWN ON RECORD OF SURVEY 22/RS/47 AND PARCEL MAP 35/PM/89. MONUMENT WAS SUBSEQUENTLY DESTROYED BY CONSTRUCTION AND REESTABLISHED USING FOUND MONUMENTS PER PARCEL MAP 35/PM/89

A description of the physical condition of the monument as found and as set or reset: PRIOR TO CONSTRUCTION MONUMENT WAS FOUND TO BE UNDISTURBED AND LEGIBLE. MONUMENT WAS REESTABLISHED USING FOUND 5/8" REBAR WITH PLASTIC CAPS STAMPED "LS 7375" WHICH WERE SET PER 35/PM/89. DESTROYED MONUMENT WAS REESTABLISHED USING A 5/8" REBAR WITH ALUMINUM CAP STAMPED "LS 7375".

SURVEYOR'S STATEMENT

This Corner Record was prepared by me or under my direction in conformance with the Land Surveyor's Act on DECEMBER 3, 2015.

Signed John E. Klamm (P.L.S.) or R.C.E. No.: 7375



COUNTY SURVEYOR'S STATEMENT

This Corner Record was received _____ and examined and filed December 22, 2015.

Signed Leslie Amberry P.L.S. or R.C.E. No.: 6584

Title County Surveyor

County Surveyor's Comment _____



BOOK 18 OF CORNER RECORDS, PAGE 57

LEGEND:

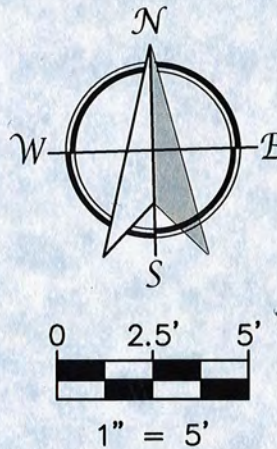
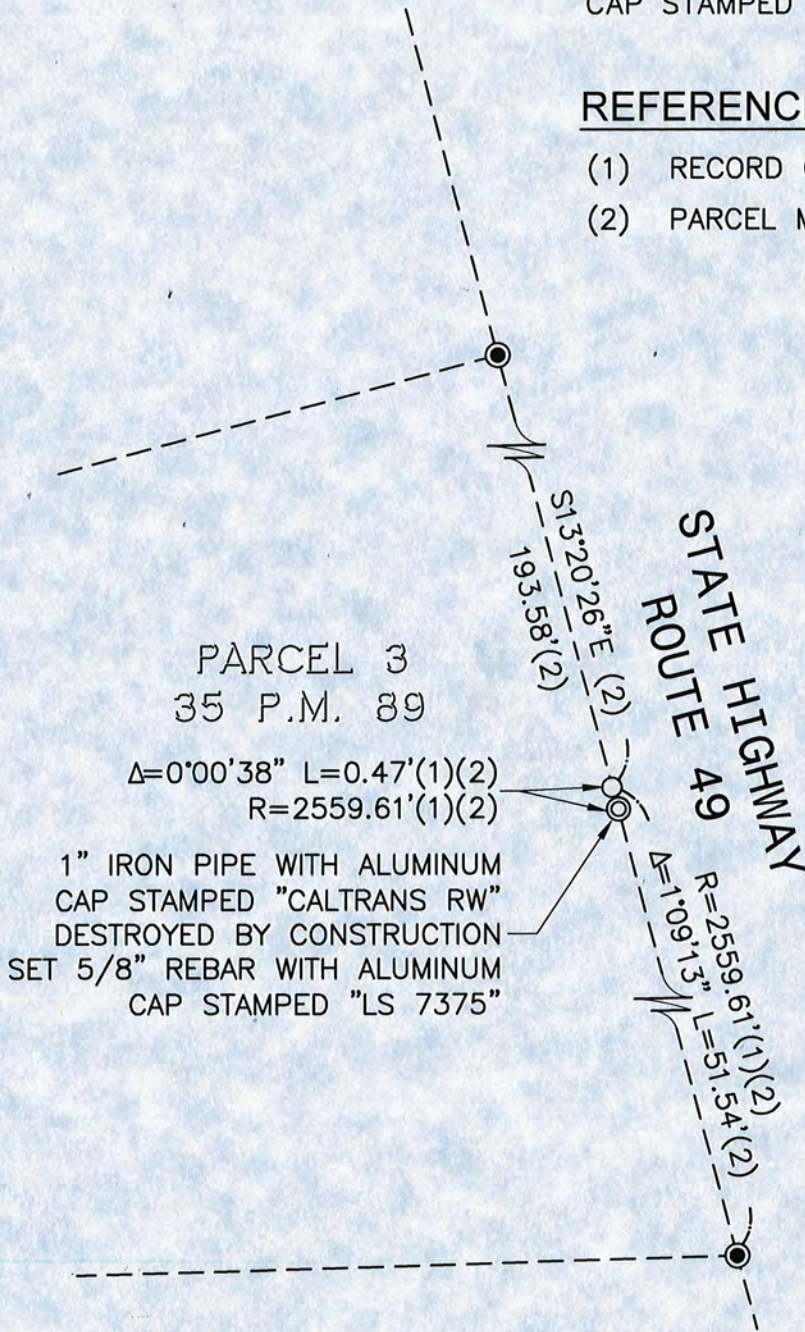
DIMENSION POINT (NOTHING FOUND OR SET). . . ○

FOUND 5/8" REBAR WITH PLASTIC CAP STAMPED "LS 7375" PER (2) ●

SET 5/8" REBAR WITH ALUMINUM CAP STAMPED "LS 7375" ⊙

REFERENCES

- (1) RECORD OF SURVEY #3220, 22 R.S. 47
- (2) PARCEL MAP #ESD14-00179, 35 P.M. 89



CORNER RECORD
WESTERLY RIGHT OF WAY LINE
STATE HIGHWAY ROUTE 47 - 22 R.S. 47
COUNTY OF PLACER, STATE OF CALIFORNIA



31 Natoma Street, Suite #160
 Folsom, CA 95630
 Phone: (916) 608-0707
 Fax: (916) 608-0701

TSD ENGINEERING, INC.
 expect more.

SCALE:
 1"=5'
 DATE:
 12/3/15
 PAGE
 2 OF 2