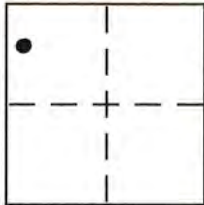


CORNER RECORD

Document Number 20150064

City of UNINCORPORATED AREA County of PLACER, California

Brief Legal Description LOT 68 PONDEROSA PALISADES SOUTH UNIT #1
BOOK "J" OF MAPS PAGE 89 P.C.O.R.



CORNER TYPE
 SEC. 23 Government Corner Control
 T. 17 N. Meander Property
 R. 16 E. Rancho Other
 M.D.M. Date of Survey 7/7/15

COORDINATES (Optional)
 N. _____
 E. _____
 Zone _____ NAD27 NAD83
 NAD83 Epoch _____
 Elev. _____
 Vert. Datum: NGVD29 NAVD88
 Meas. Units: Metric Imperial

Corner - Left as found Found and tagged Established Reestablished Rebuilt

Identification and type of corner found: Evidence used to identify or procedure used to establish or reestablish the corner:

- = FOUND RR SPIKE PER "J"/MAPS/89 P.C.O.R.
- = FOUND 5/8" REBAR w/ PLASTIC CAP L.S. 3332, BELIEVE TO BE ORIGINAL PER "J"/MAPS/89 P.C.O.R.
- ⊗ = FOUND 5/8" REBAR NO TAG, BELIEVE TO BE ORIGINAL PER "J"/MAPS/89 P.C.O.R.
- = FOUND 3/4" IRON PIPE w/ PLASTIC PLUG L.S. 5549 PER 2/CR/143

A description of the physical condition of the monument as found and as set or reset:

⊗ = SET BATHEY MONUMENT (T-BAR) w/ NAIL & TAG P.L.S. 8628

JN: 15057

SURVEYOR'S STATEMENT

This Corner Record was prepared by me or under my direction in conformance with

the Land Surveyor's Act on JULY 9, 2015

Signed [Signature] P.L.S. or R.C.E. No. 8628
LIC. EXPIRES 12/31/15



COUNTY SURVEYOR'S STATEMENT

This Corner Record was received _____

and examined and filed November 10, 2015

Signed Leslie Hmsberry P.L.S. or R.C.E. No. 6584

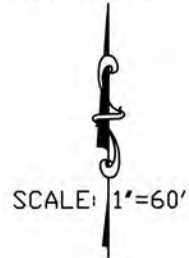
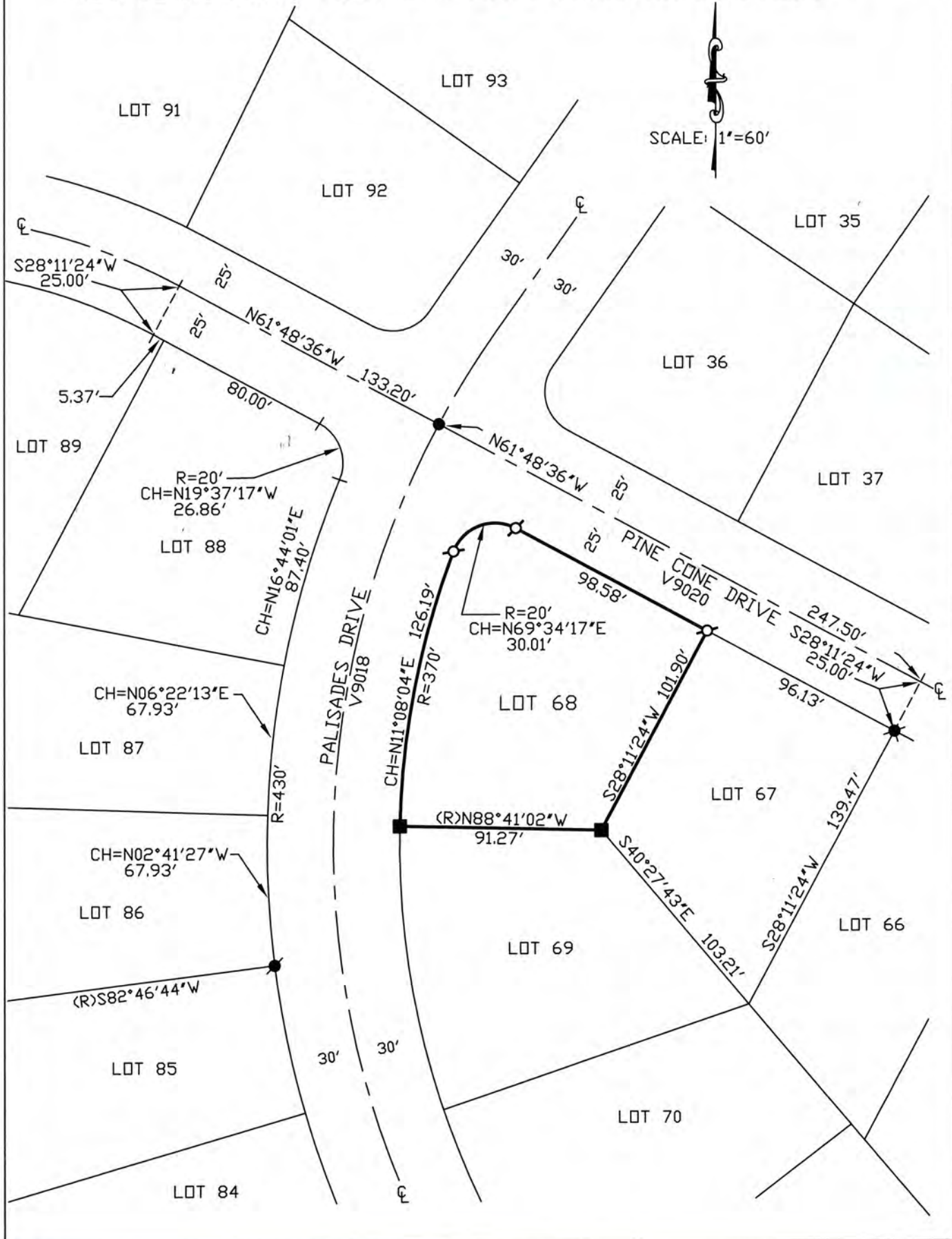
Title County Surveyor



County Surveyor's Comment _____

BOOK 18 CORNER RECORDS PAGE 44

NOTE: THE BEARINGS AND DISTANCES SHOWN ARE RECORD PER "J"/MAPS/89 P.C.D.R.
 NO MATERIAL DISCREPANCIES WITH RECORD INFORMATION WERE FOUND.



BOOK 18 CORNER RECORDS PAGE 44