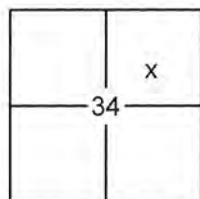


CORNER RECORD

Document Number

20150042

City of _____

County of PLACER, CaliforniaBrief Legal Description LOT 27, SERENE LAKES UNIT NO.1 SUBDIVISION, I/MAPS/17 O.R.P.C.

SEC. 34
T. 17 N.
R. 14 E.
M.D.B. & M.

CORNER TYPE

Government Corner Control
 Meander Property
 Rancho Other
 Date of Survey 6/17/2015

COORDINATES (OPTIONAL)

N. _____
 E. _____
 Zone _____ Datum _____
 Elev. _____
 Vert. Datum: NGVD29 NAVD88
 Meas. Units: Metric Imperial

CORNER- Left as Found Found and Tagged Established Reestablished Rebuilt

Identification and type of corner found: Evidence used to identify or procedure used to establish or reestablish the corner:

USED RECORD DIMENSIONS AND FOUND MONUMENTS PER I/MAPS/17 O.R.P.C. AMENDED BY CERTIFICATE OF CORRECTION 1342/393 AND SHOWN ON 4/RS/1 O.R.P.C., FOUND MONUMENTS PER 4/CR/52, 7/CR/41, AND 12/CR/17 O.R.P.C. AND A FOUND MONUMENT OF NO RECORD IN RECORD POSITION, TO REESTABLISH THE MISSING CORNERS OF LOT 27, AS SHOWN ON THE ACCOMPANYING PLAT.

A description of the physical condition of the monument as found and as set or reset:

- SET $\frac{5}{8}$ " REBAR WITH YELLOW PLASTIC CAP LS-7429 AS SHOWN ON PLAT
 FOUND MONUMENT AS SHOWN ON PLAT
 DIMENSION POINT (NOTHING FOUND OR SET)

SURVEYOR'S STATEMENT

This Corner Record was prepared by me or under my direction in conformance with the

Land Surveyors Act on September 08, 2015

Signed Matthew Webb P.L.S. or R.C.E. No. 7429



COUNTY SURVEYOR'S STATEMENT

This Corner Record was received _____

and examined and filed November 10, 2015

Signed Leslie Amberry P.L.S. or R.C.E. No. 6584

Title County Surveyor



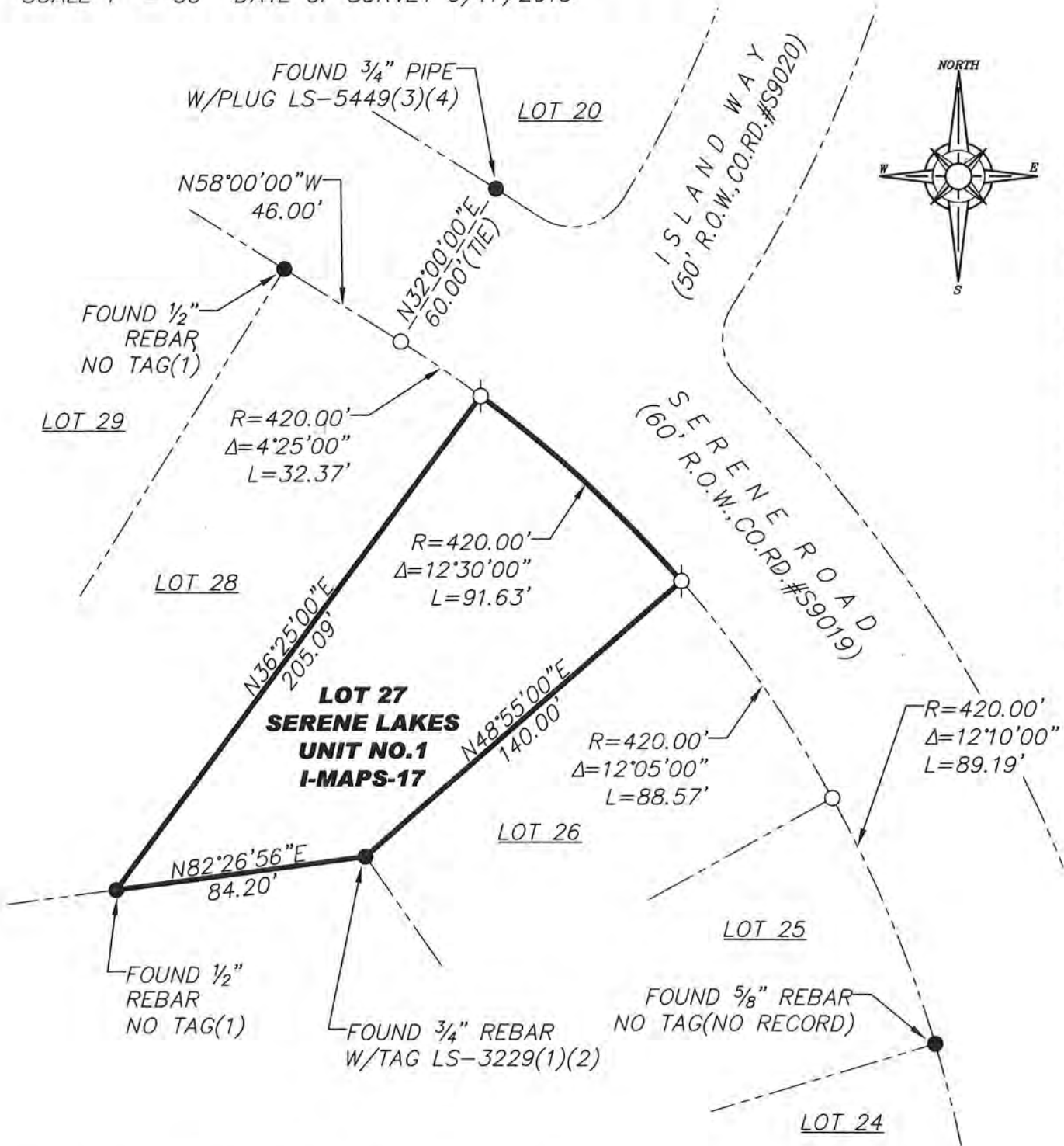
COUNTY SURVEYOR'S COMMENT:

BOOK 18 CORNER RECORDS PAGE 42

PLAT OF SURVEY

LOT 27, SERENE LAKES UNIT NO.1 SUBDIVISION, AS FILED IN BOOK 1 OF MAPS AT PAGE 17, OFFICIAL RECORDS PLACER COUNTY, CALIFORNIA. A PORTION OF SECTION 34, TOWNSHIP 17 N., RANGE 14 E., M.D.B. & M.

SCALE 1" = 50' DATE OF SURVEY 6/17/2015



BOOK 18 CORNER RECORDS PAGE 42

- FOUND MONUMENT AS SHOWN HEREON
- SET 5/8" REBAR WITH YELLOW PLASTIC CAP L.S. 7429 OR OTHERWISE NOTED
- DIMENSION POINT (NOTHING FOUND OR SET)
- (1) PER I/MAPS/17 AMENDED BY COC 1342/393 (3) PER 7/CR/41
- (2) PER 4/CR/52 (4) PER 12/CR/17 J/N 2532.00