

CORNER RECORD

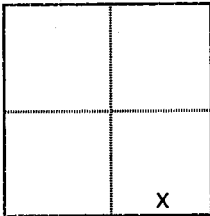
COUNTY OF PLACER, CALIFORNIA

City of Unincorporated

Document Number 20150036

Brief Legal Description Parcels A and B Book 15 PM 60

PLS Job No. 879



S. 35
 T. 12 N
 R. 7 E

CORNER TYPE

- Government Corner Control
 Meander Property
 Rancho Other
 Date of Survey 4/12/15

COORDINATES

(Optional)

N. _____
 E. _____
 Zone _____ Datum _____
 Elev. _____

Corner ---

- Left as found Found and tagged Established Reestablished Rebuilt

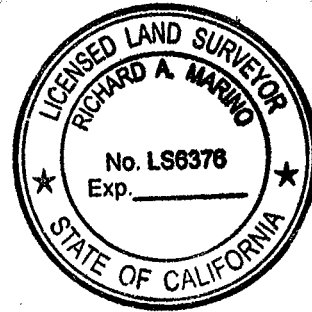
Identification and type of corner found: Evidence used to identify or procedure used to establish or reestablish corner:
 Found property corner monuments of record per 15 PM 60, 6 PM 160 and 8 PM 139. Note: The southwest corner of Parcel A is marked with a 3/4" rebar w/no tag in lieu of the record 5/8" rebar. The field location of the 3/4" rebar agrees with the record position based on ties to three original monuments located on this survey.

A description of the physical condition of the monument as found and as set or reset:

The southwest reference corner of Parcel A was missing and re-set with a 5/8" rebar and cap; L.S. 6376 based on the three found monuments shown in close proximity. The northeast corner of Parcel B was reset on a line between the northwest corner of Parcel B and the monument 29.07' east of the northeast corner. The southwest corner of Parcel B was missing and re-set with a 5/8" rebar and cap; L.S. 6376

SURVEYOR'S STATEMENT

This Corner Record was prepared by me or under my direction
 in conformance with the Professional Land Surveyors' Act
 on May 14 20 15
 Signed Richard A Marino
 L.S. or R.C.E. Number 6376



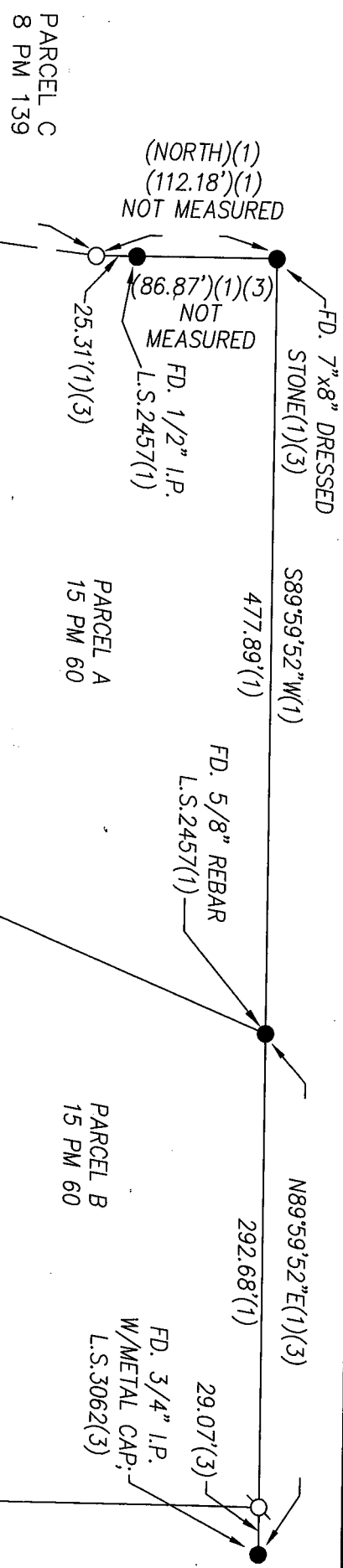
COUNTY SURVEYOR'S STATEMENT

This Corner Record was received _____ 20 _____
 and examined and filed August 12, 2015 20 _____
 Signed Leslie Amberry Title County Surveyor
 L.S. or R.C.E. Number 6584



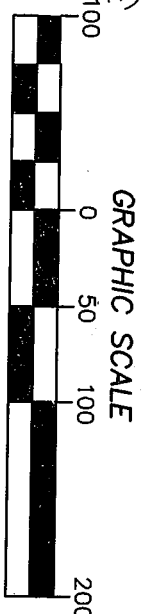
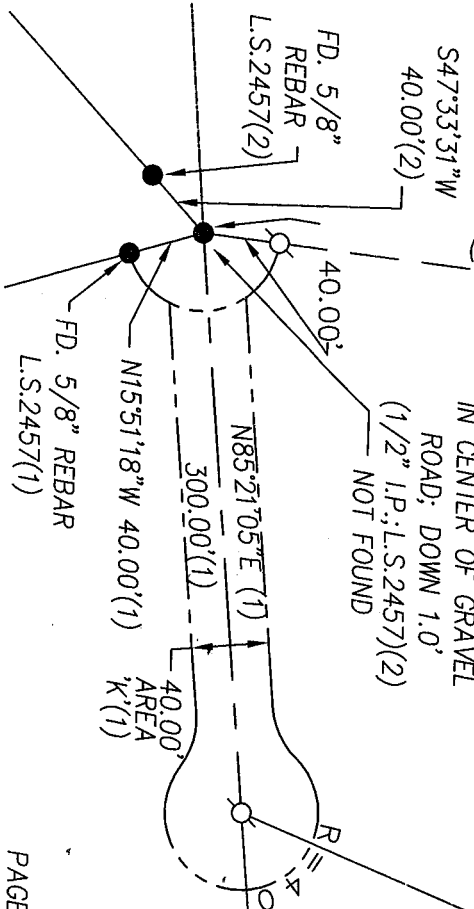
County Surveyor's Comment _____

BOOK 18 CORNER RECORDS PAGE 27



(S06°54'42"W 477.18')(1) NOT MEASURED
 437.18')(1) NOT MEASURED

FD. 3/4"
 REBAR; NO TAG
 IN CENTER OF GRAVEL
 ROAD; DOWN 1.0'
 (1/2" I.P.; L.S.2457)(2)
 NOT FOUND



LEGEND

- DIMENSION POINT
- FOUND AS NOTED
- ⊙ SET 5/8" REBAR; LS6376
- (1) RECORD PER 15 PM 60
- (2) RECORD PER 8 PM 139
- (3) RECORD PER 6 PM 160

