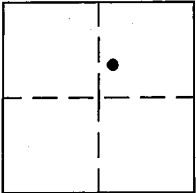


CORNER RECORD

COUNTY OF PLACER, CALIFORNIA

City of _____ Document Number 20150033

Brief Legal Description LOT 21/22 G-MAPS-48, O.R.P.C.



SEC 7
T13N
R9E

CORNER TYPE

Government Cor. Control
Meander Property
Rancho other
Date of Survey MARCH 16, 2015

CORNER TYPE (optional)

N. _____
E. _____
Zone _____ Datum _____
Elev. _____

Corner - Left as Found Found and Tagged Established Reestablished Rebuilt

Identification and type of corner found: Evidence used to identify or procedure used to establish or reestablish corner: FOUND 3/4" IRON PIN IN TRAVELED WAY OF GREENWOOD DRIVE, PER GOLDEN OAK ACRES UNIT 1, AT BOOK G, OF MAPS, PAGE 48, O.R.P.C., FROM FOUND MONUMENT, ESTABLISHED REFERENCE POINTS PRIOR TO ASPHALT OVERLAY.

A description of the physical condition of the monument as found and as set or reset: FROM REFERENCE POINTS, SET MAG-NAIL W/ 1-1/4" BRASS TAG STAMPED "PLACER CO. SURVEYOR" CENTERED OVER THE FOUND MONUMENT AFTER ASPHALT OVERLAY.

SURVEYOR'S STATEMENT

This Corner Record was prepared by me or under my direction in conformance with the Land Surveyors' Act on JULY 30 2015.

Signed [Signature] L.S. or R.C.E. Number LS 7941



COUNTY SURVEYOR'S STATEMENT

This Corner Record was received _____ 20 ____ and examined and filed August 12, 2015 20 ____

Signed [Signature] Title County Surveyor

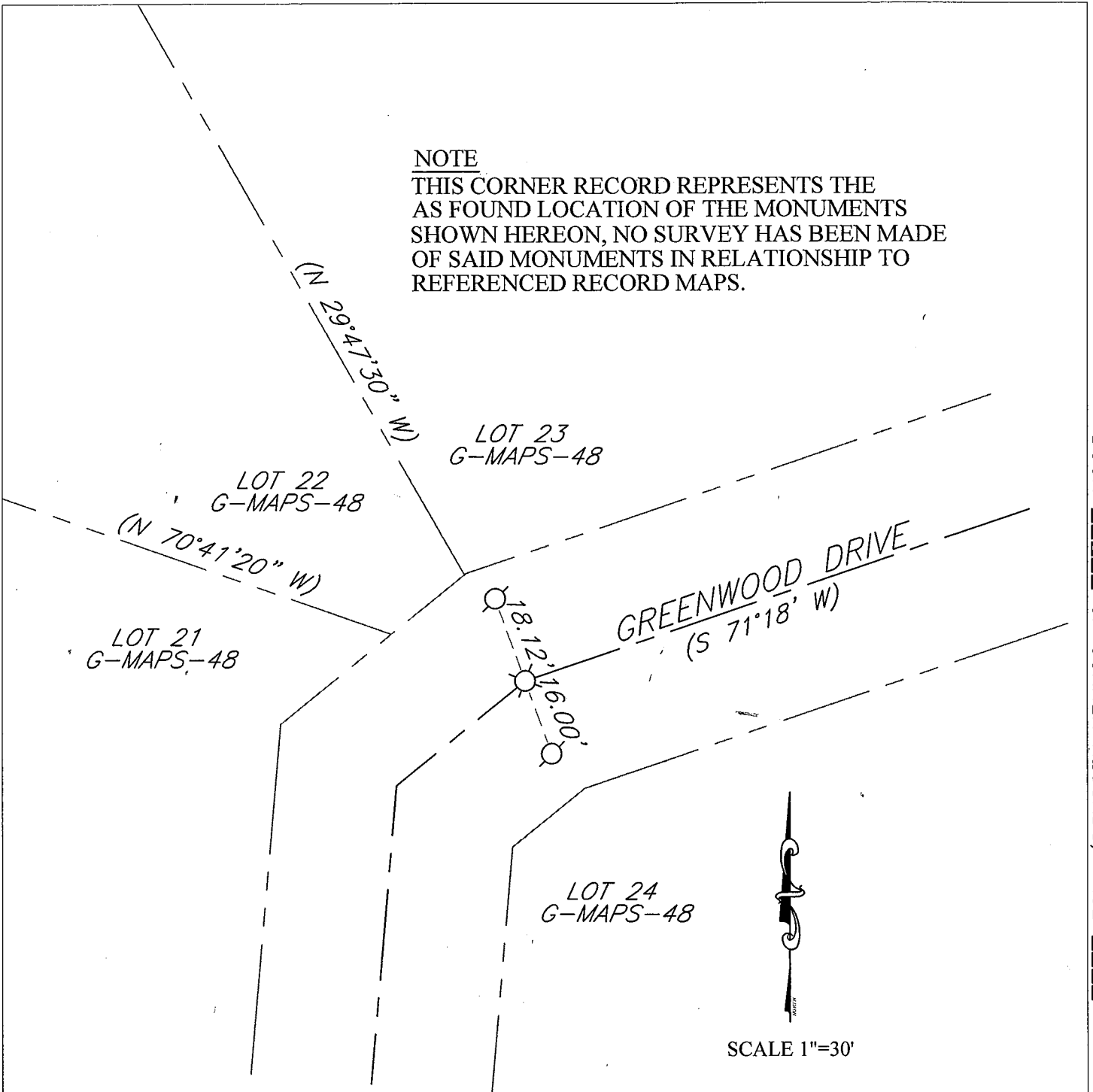


County Surveyor's Comment:
xx

BOOK 18 OF CORNER RECORDS, PAGE 24

NOTE

THIS CORNER RECORD REPRESENTS THE AS FOUND LOCATION OF THE MONUMENTS SHOWN HEREON, NO SURVEY HAS BEEN MADE OF SAID MONUMENTS IN RELATIONSHIP TO REFERENCED RECORD MAPS.



LEGEND

- ⊗ FD. 3/4" IRON PIN PRIOR TO PAVEMENT OVERLAY
SET MAG NAIL WITH "PLACER CO. SURVEYOR" TAG
- ⊙ SET 5/8" REBAR WITH "PLACER CO. SURVEYOR" TAG
- () RECORD PER G-MAPS-48 O.R.P.C.