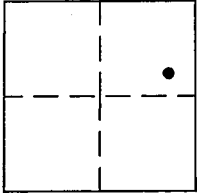


CORNER RECORD

COUNTY OF PLACER, CALIFORNIA

City of \_\_\_\_\_ Document Number 20150032

Brief Legal Description G-MAPS-49, WHITE CLOVER VALLEY ROAD & GOLDEN OAK LANE



SEC 7  
T13N  
R9E

CORNER TYPE

Government Cor.  Control   
Meander  Property   
Rancho  other   
Date of Survey MARCH 16, 2015

CORNER TYPE (optional)

N. \_\_\_\_\_  
E. \_\_\_\_\_  
Zone \_\_\_\_\_ Datum \_\_\_\_\_  
Elev. \_\_\_\_\_

Corner - Left as Found  Found and Tagged  Established  Reestablished  Rebuilt

Identification and type of corner found: Evidence used to identify or procedure used to establish or reestablish corner: FOUND 1/2" IRON PIN IN TRAVELED WAY OF WHITE CLOVER VALLEY ROAD, SHOWN AS 3/4" IRON PIN PER GOLDEN OAK ACRES UNIT 2, AT BOOK G, OF MAPS, PAGE 49, O.R.P.C., FROM FOUND MONUMENT, ESTABLISHED REFERENCE POINTS PRIOR TO ASPHALT OVERLAY.

A description of the physical condition of the monument as found and as set or reset: FROM REFERENCE POINTS, SET MAG-NAIL W/ 1-1/4" BRASS TAG STAMPED "PLACER CO. SURVEYOR" CENTERED OVER THE FOUND MONUMENT AFTER ASPHALT OVERLAY.

SURVEYOR'S STATEMENT

This Corner Record was prepared by me or under my direction in conformance with the Land Surveyors' Act on JULY 30 2015.

Signed [Signature] L.S. or R.C.E. Number LS 7941



COUNTY SURVEYOR'S STATEMENT

This Corner Record was received \_\_\_\_\_ 20 \_\_\_\_ and examined and filed August 12, 2015 20 \_\_\_\_

Signed [Signature] Title County Surveyor



County Surveyor's Comment:  
xx

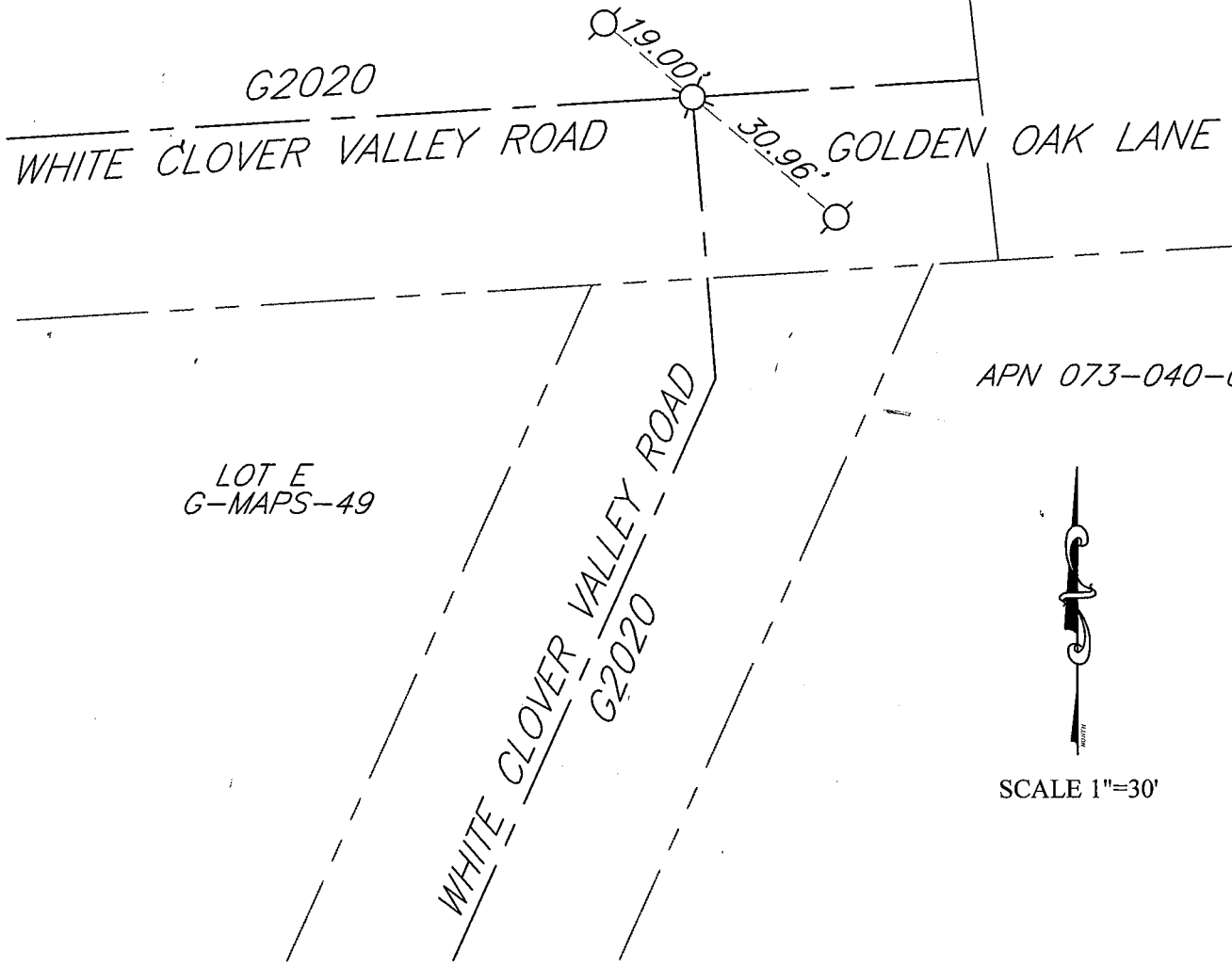
BOOK 18 OF CORNER RECORDS, PAGE 23

NOTE

THIS CORNER RECORD REPRESENTS THE AS FOUND LOCATION OF THE MONUMENTS SHOWN HEREON, NO SURVEY HAS BEEN MADE OF SAID MONUMENTS IN RELATIONSHIP TO REFERENCED RECORD MAPS.

LOT 1  
G-MAPS-49

APN 073-040-054



BOOK 18 OF CORNER RECORDS, PAGE 23



SCALE 1"=30'

LEGEND

- ⊗ FD. 1/2" IRON PIN PRIOR TO PAVEMENT OVERLAY  
SET MAG NAIL WITH "PLACER CO. SURVEYOR" TAG
- ⊙ SET 5/8" REBAR WITH "PLACER CO. SURVEYOR" TAG