

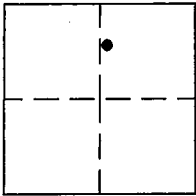
CORNER RECORD

COUNTY OF PLACER, CALIFORNIA

City of \_\_\_\_\_

Document Number 20150020

Brief Legal Description 19-RS-56 O.R.P.C.



SEC 29  
T14N  
R9E

CORNER TYPE

Government Cor.  Control   
Meander  Property   
Rancho  other   
Date of Survey MARCH 12, 2015

CORNER TYPE (optional)

N. \_\_\_\_\_  
E. \_\_\_\_\_  
Zone \_\_\_\_\_ Datum \_\_\_\_\_  
Elev. \_\_\_\_\_

Corner - Left as Found  Found and Tagged  Established  Reestablished  Rebuilt

Identification and type of corner found: Evidence used to identify or procedure used to establish or reestablish corner: FOUND RAILROAD SPIKE IN TRAVELED WAY OF PLACER HILLS ROAD PER RECORD OF SURVEY NO.2833, AT BOOK 19, PAGE 56, O.R.P.C., FROM FOUND MONUMENT, ESTABLISHED REFERENCE POINTS PRIOR TO ASPHALT OVERLAY.

A description of the physical condition of the monument as found and as set or reset: FROM REFERENCE POINTS, SET PK-NAIL W/ 1-1/4" BRASS TAG STAMPED "PLACER CO. SURVEYOR" CENTERED OVER THE FOUND MONUMENT AFTER ASPHALT OVERLAY.

SURVEYOR'S STATEMENT

This Corner Record was prepared by me or under my direction in conformance with the Land Surveyors' Act on JULY 30 2015.

Signed [Signature] L.S. or R.C.E. Number LS 7941



COUNTY SURVEYOR'S STATEMENT

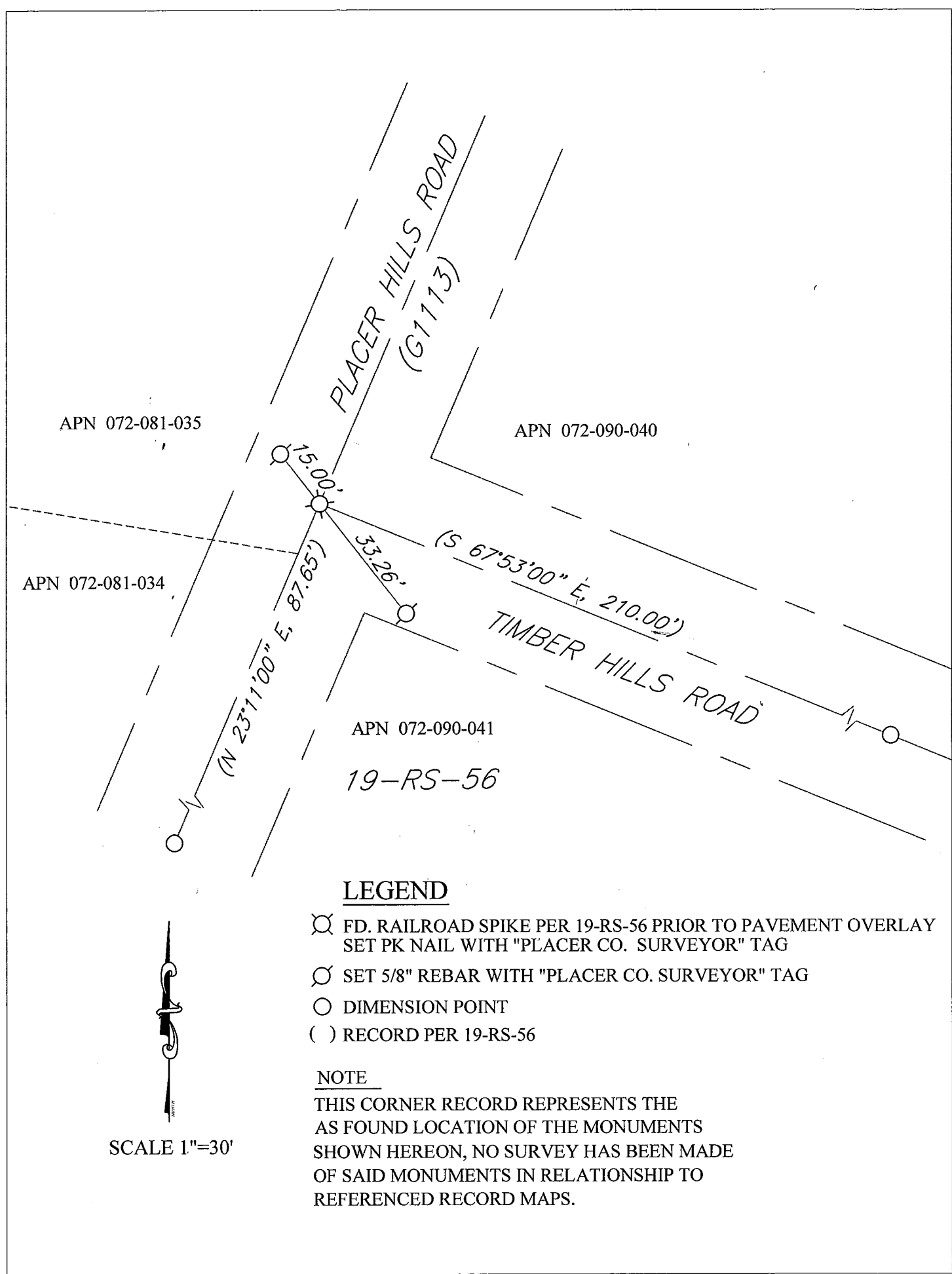
This Corner Record was received \_\_\_\_\_ 20 \_\_\_\_ and examined and filed August 12, 2015 20 \_\_\_\_.

Signed [Signature] Title County Surveyor



County Surveyor's Comment:  
xx

BOOK 18 OF CORNER RECORDS, PAGE 16



**LEGEND**

- ⊗ FD. RAILROAD SPIKE PER 19-RS-56 PRIOR TO PAVEMENT OVERLAY SET PK NAIL WITH "PLACER CO. SURVEYOR" TAG
- SET 5/8" REBAR WITH "PLACER CO. SURVEYOR" TAG
- DIMENSION POINT
- ( ) RECORD PER 19-RS-56

**NOTE**

THIS CORNER RECORD REPRESENTS THE AS FOUND LOCATION OF THE MONUMENTS SHOWN HEREON, NO SURVEY HAS BEEN MADE OF SAID MONUMENTS IN RELATIONSHIP TO REFERENCED RECORD MAPS.



SCALE 1"=30'