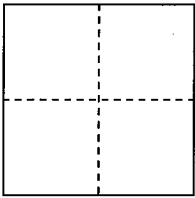


CORNER RECORD

COUNTY OF PLACER, CALIFORNIA

City of \_\_\_\_\_ Document Number 20150016

Brief Legal Description Portions Parcels A & B - 12 PM 46



S. 10

CORNER TYPE

COORDINATES

(Optional)

T. 14 N

Government Corner

Control

N. \_\_\_\_\_

R. 09 E

Meander

Property

E. \_\_\_\_\_

Rancho

Other

Zone \_\_\_\_\_ Datum \_\_\_\_\_

Date of Survey \_\_\_\_\_

Elev. \_\_\_\_\_

Corner--- Left as found  Found and tagged  Established  Reestablished  Rebuilt

Identification and type of corner found: Evidence used to identify or procedure used to establish or reestablish corner: Located corners of record in record positions.

A description of the physical condition of the monument as found and as set or reset: NW corner Parcel A of 12 PM 146 per record, 3/4" IP tagged RCE 16269. Found 3/4" CIP stamper RCE 16269 in place. NE corner Parcel A found 3/4"IP per record in record position, affixed tag stamped PLS 6596.

SURVEYOR'S STATEMENT

This Corner Record was prepared by me or under my direction in conformance with the Professional Land Surveyors' Act on June 1 20 15.

Signed [Signature]

L.S. or R.C.E. Number 6596 Expiration Date 12-31-15

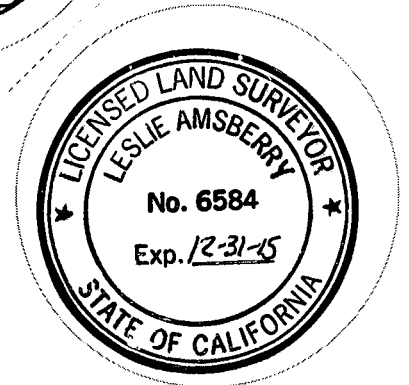


COUNTY SURVEYOR'S STATEMENT

This Corner Record was received \_\_\_\_\_ 20 \_\_\_\_\_ and examined and filed June 9, 2015 20 \_\_\_\_\_

Signed [Signature] Title County Surveyor

L.S. or R.C.E. Number 6584 Expiration Date 12-31-15

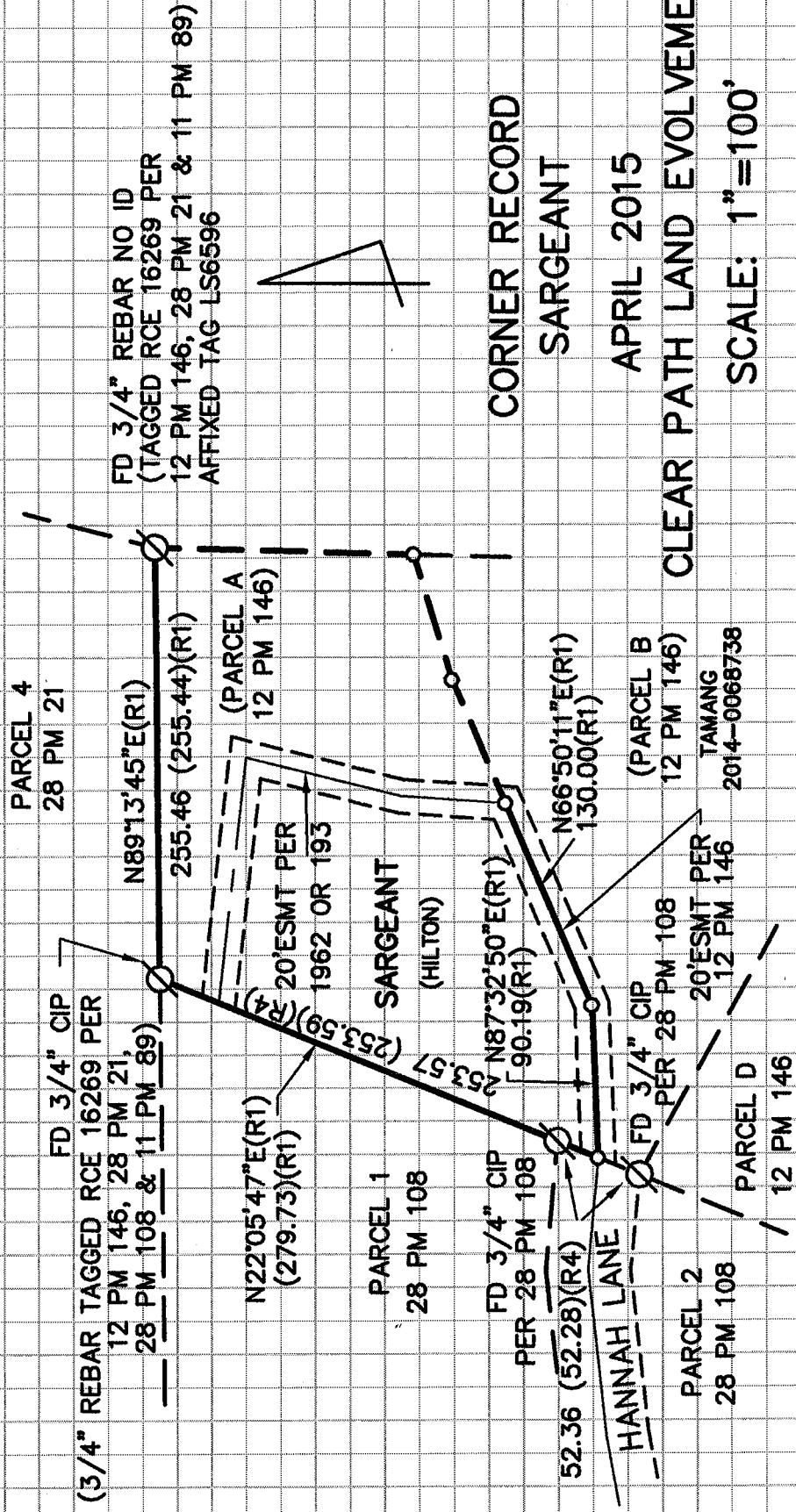


County Surveyor's Comment \_\_\_\_\_

BOOK 18 CORNER RECORDS PAGE 7

**LEGEND**

- ⊙ .....FD MONUMENT AS NOTED
- .....DIMENSION POINT
- R1.....RECORD PER 12 PM 146 PCR
- R4.....RECORD PER 28 PM 108 PCR



CORNER RECORD  
SARGEANT

APRIL 2015

CLEAR PATH LAND EVOLVEMENT INC

SCALE: 1"=100'